

# QUANTUM.

## HT6 / HT6A / HT7 / HT7A

### SPECIFICATIONS :

Application:

HT6 - Med. FW

HT7 - Hvy FW

5.2:1 Gear Ratio

Line Capacity:

HT6 - 160 yds / 8 lb

HT7 - 180 yds / 10 lb

Retrieve Rate (Inches Per Turn):

HT6 - 30.2"

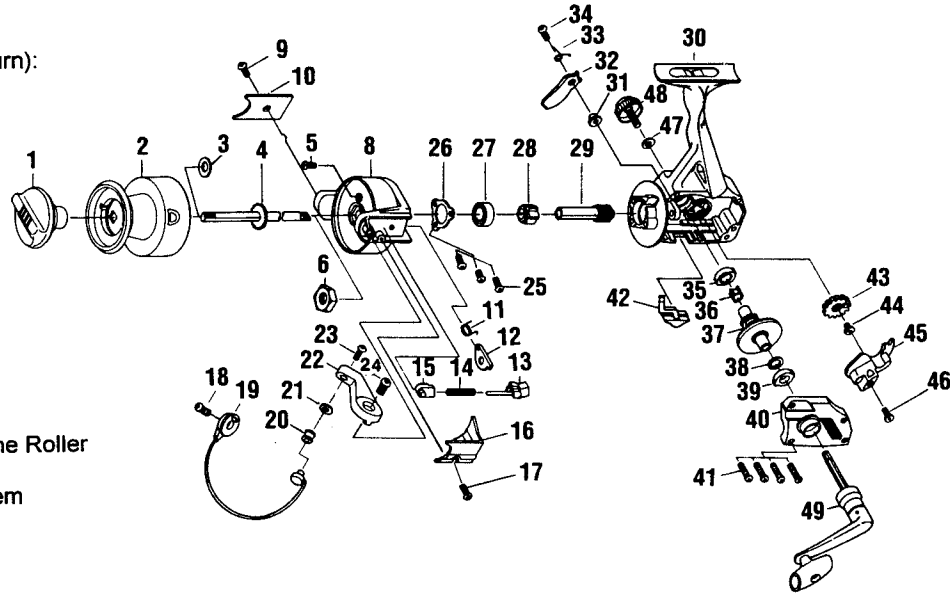
HT7 - 34.1"

Weight:

HT6 - 12.4 oz.

HT7 - 13.8 oz.

1 Ball Bearing



### FEATURES :

Front Drag

Balanced Handle

Oversized Twist Reducer Line Roller

Aluminum Spool

Geared (S-Curve) O/S System

Color: Gold

Key No.	Part No.	Description	Price	Key No.	Part No.	Description	Price
1	UL332-02	← DRAG KNOB ASSEMBLY	3.47	29	UL011-01	← PINION GEAR	6.82
2	UL321-12 VL321-10	SPOOL ASSEMBLY (HT6 / 7)	6.90	30	UL001-12 VL001-10	BODY (HT6 / 7)	4.45
2	UL321-17 VL321-14	SPOOL ASSEMBLY (HT6A / 7A)	6.90	30	VL001-58	← BODY (HT6A / 7A)	4.45
3	UL030-01	← SPOOL ADJUSTMENT WASHER	0.36	31	UL091-01	← A/R PAWL POST	0.74
4	UL315-01	← MAIN SHAFT ASSEMBLY	3.52	32	UL063-01	← A/R PAWL	1.26
5	GU077-0	← ROTOR NUT LOCK SCREW	0.15	33	UL061-01	← A/R PAWL SPRING	1.13
6	UL006-01	← ROTOR NUT	1.13	34	UL077-01	← A/R PAWL SCREW	0.26
8	UL009-09 VL009-08	ROTOR	3.85	35	UL013-01	← GEAR SHAFT BUSHING	1.13
9	GU077-0	← KICK LEVER COVER SCREW	0.15	36	UL086-01	← SILENT CAM	0.68
10	UL024-02	← KICK LEVER COVER	0.74	37	VL012-01	← DRIVE GEAR	3.75
11	UL049-01	← KICK LEVER SPRING	0.74	38	UL026-01	← DRIVE GEAR ADJ. WASHER	0.68
12	UL019-01	← KICK LEVER	1.42	39	UL013-01	← GEAR SHAFT BUSHING	1.13
13	UL031-01	← SPRING SHAFT	0.74	40	UL023-12 VL023-10	BODY COVER	2.85
14	UL022-01	← BAIL SPRING	1.13	40	VL023-58	← BODY COVER	2.85
15	UL020-01	← SPRING HOLDER	0.68	41	JU057-03	← BODY COVER SCREW	0.79
16	UL087-02	← BAIL SPRING COVER	0.68	42	UL059-01	← A/R LEVER (HT6 / 7)	1.13
17	GU077-0	← BAIL SPRING COVER SCREW	0.15	42	UL059-02	← A/R LEVER (HT6A / 7A)	1.13
18	UL051-01	← BAIL HOLDER SCREW	0.74	43	UL053-01	← OSCILLATOR GEAR	2.39
19	UL347-51 VL347-51	BAIL ASSEMBLY	6.82	44	UL158-01	← OSCILLATOR GEAR BUSHING	0.52
20	VL004-01	← LINE ROLLER	2.21	45	UL025-01	← OSCILLATOR SLIDER	2.42
21	UL102-01	← LINE ROLLER WASHER	0.50	46	UL100-01	← MAIN SHAFT SCREW	0.26
22	VL007-01	← ARM LEVER	1.13	47	UL105-01	← HANDLE SCREW WASHER	0.57
23	UL108-01	← LINE SLIDER SCREW	0.76	48	UL073-02	← HANDLE CAP SCREW (HT6 / 7)	1.65
24	UL051-01	← ARM LEVER SCREW	0.74	48	XU073-04	← HANDLE CAP SCREW (HT6A / 7A)	1.65
25	JU077-01	← BEARING PLATE SCREW	0.64	49	VL318-05	← HANDLE ASSEMBLY (HT6 / 7)	6.2C
27	AQ028-05	← BALL BEARING	7.00	49	UL318-53	← HANDLE ASSEMBLY (HT6A / 7A)	6.2C
28	UL060-01	← RATCHET GEAR	3.24				

MODEL INTRODUCED : 1998	EFFECTIVE DATE OF PARTS LIST/DIAGRAM: Nov. '98	DISCONTINUED : N/A
-------------------------	--	--------------------

Zebco, P.O. Box 270, Tulsa, Ok. 74101; 918-831-6965 Phone or 800-FIXREEL (349-7335) FAX  
PLEASE ORDER BY PART NUMBER

Prices subject to change without notice.

Prices do not include postage and handling.

