



# 888GW / 888N / HT80

### SPECIFICATIONS:

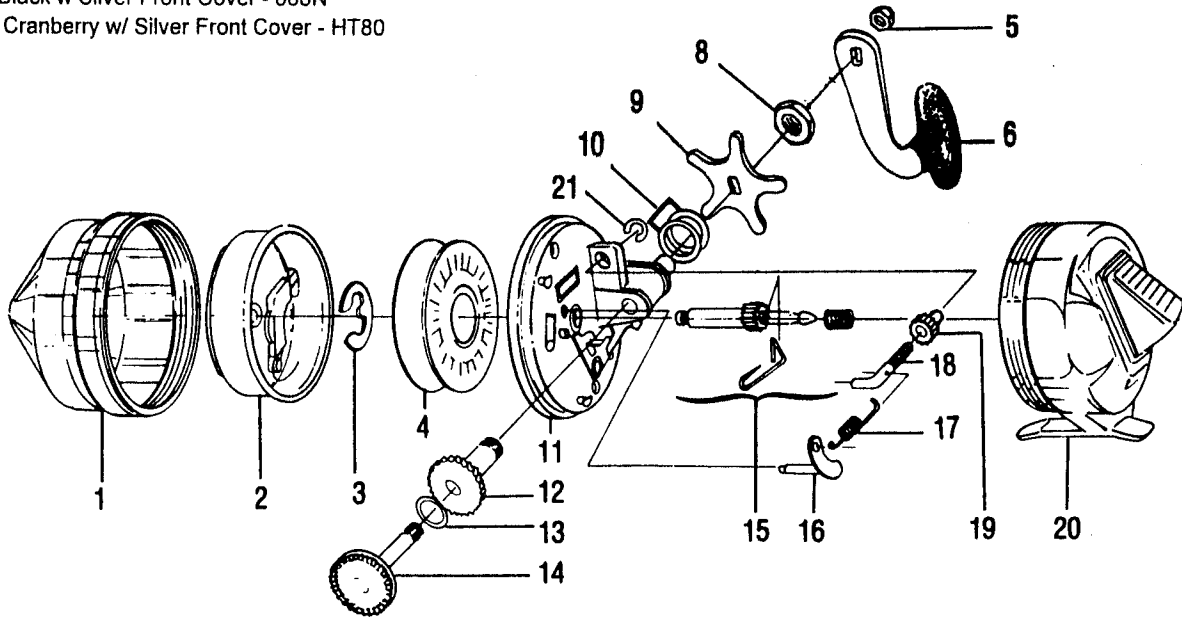
Application: Hvy FW  
 Line Capacity: 100 yds / 20 lb  
 Gear Ratio: 3.0:1  
 14.8 oz.

### FEATURES:

Star Actuated Drag  
 Silent On / Off Anti-Reverse  
 Stainless Steel Front Cover

### Color:

White w/ Silver Front Cover - 888GW  
 Black w Silver Front Cover - 888N  
 Cranberry w/ Silver Front Cover - HT80



Key No.	Description	Part No.			Price	Key No.	Description	Part No.			Price
		888GW	888N	HT80				888GW	888N	HT80	
1	Front Cover Assy.	N/A	FE324-02	FE324-05	6.85	11	Body Assy.	N/A	PY301-02	←	5.34
1	Front Cover Assy.	FE324-04	N/A	N/A	8.69	11	Body Assy.	PY301-03	N/A	N/A	6.94
2	Spinnerhead Assy.	EE310-01	←	←	6.85	12	Crank Bushing	PY326-02	←	←	4.45
3	Spool Clip	GZ034-01	←	←	0.60	13	Thrust Washer	PZ070-01	←	←	0.30
4	Spool	N/A	FE021-01	←	4.61	14	Crank Shaft Assy.	PZ308-02	←	←	4.80
4	Spool	PZ321-01ASA	N/A	N/A	6.28	15	Center Shaft Assy.	FE315-01	←	←	3.92
4	Spool w/ 20# Line	N/A	FE321-03	←	6.85	16	Clutch Shaft	PY307-02	←	←	1.76
4	Spool w/ 20# Line	PZ321-01ASAM	N/A	N/A	9.56	17	Clutch Spring	MZ085-01	←	←	0.60
5	Crank Nut	QZ003-02	←	←	0.76	18	Clutch Screw	MZ032-01	←	←	0.65
6	Handle S/A	N/A	PY318-04	PY318-06	3.75	19	Clutch Pinion	MZ086-01	←	←	0.65
6	Handle S/A	PY318-05	N/A	N/A	5.74	20	Back Cover Assy.	EE323-06	EE323-03	EE323-08	6.83
8	Crank Bushing Nut	PY087-01	←	←	0.66	21	Clutch Pin. Ret. Ring	MZ089-02	MZ089-01	←	0.52
9	Drag Adjust Star	PY032-01	←	←	1.41	22	Thumb stop	PY009-01	←	←	1.11
10	O-Ring	MZ088-01	←	←	0.52						

MODEL 888GW - '83 888N - '83

INTRODUCED: HT80 - 1998

EFFECTIVE DATE OF

PARTS LIST/DIAGRAM: Aug. '98

DISCONTINUED: N/A

Zebco, P.O. Box 270, Tulsa, Ok. 74101; 918-831-6965 Phone or 800-FIXREEL (349-7335) FAX

PLEASE ORDER BY PART NUMBER

Prices subject to change without notice. Prices do not include postage and handling.

