

QUANTUM.

IR320 / IR330 Iron Bigwater

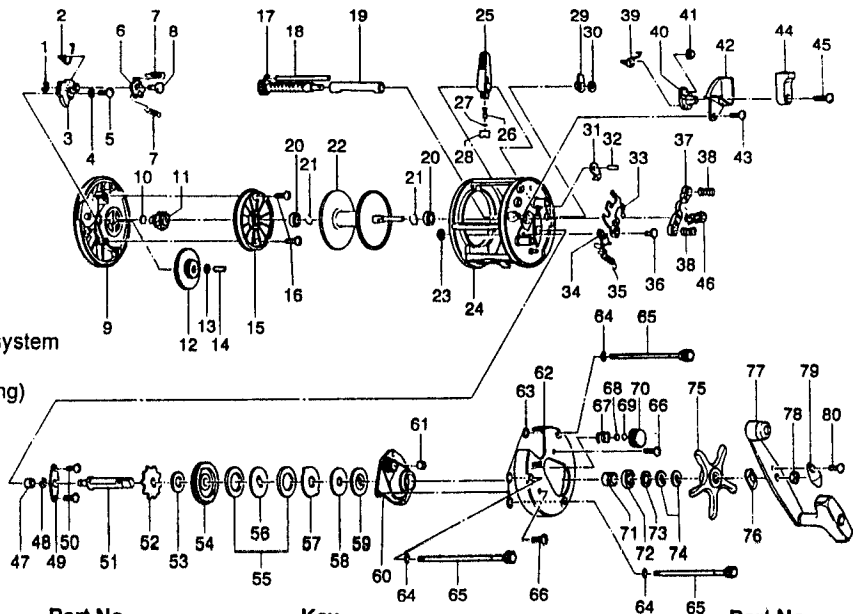
SPECIFICATIONS:

IR320: Hvy FW / Med Lt. SW
 IR330: X Hvy FW / Med. SW
 Line Cap.: 300 yds / 20 lb (IR320)
 400 yds / 20 lb (IR330)

5.2:1 Gear Ratio
 17.5 oz. (IR320) / 17.8 oz. (IR330)
 Lever Clutch Spool Release
 3 Ball Bearings
 Inches Per Handle Turn (IPT) = 27.2

FEATURES:

Machined, 1-Piece Aluminum Frame
 Oversized, Multi-Disc (6 washer) drag system
 Audible On/Off Bait Clicker
 Synchronized Levelwind (non-disengaging)
 Anodized-Ceramic coated frame
 Brass Magnum Gears
 Stainless Steel Bearings
 Counterbalanced T-style Handle Knob
 Aluminum Side Plates
 Machine Forged Aluminum Spool
 COLOR: Beige



Key		Part No.		Key		Part No.		Price
No.	Description	IR320	IR330	No.	Description	IR320	IR330	Price
1	Click Pawl Post E-Clip	NX092-01	↔	40	Release Slider Cam	KV141-01	↔	1.00
2	Bait Click Lever Spring	KV022-01	↔	41	Release Slider Guide Bushing	JX068-01	↔	1.08
3	Bait Click Lever	KV109-01	↔	42	Release Lever Cover	KV143-01	↔	1.00
4	Bait Click Lever Washer	KV038-01	↔	43	Release Slider Screw	KX050-01	↔	0.15
5	Bait Click Lever Screw	AV125-01	↔	44	Release Lever	KV142-01	↔	1.95
6	Bait Click Pawl	KV114-01	↔	45	Release Lever Screw	KV053-01	↔	0.90
7	Bait Click Spring	KV110-01	↔	46	Pinion Gear	KV011-01	↔	6.40
8	Bait Click Pawl Post	KV098-01	↔	47	Crank Shaft Bearing (L)	JX017-01	↔	5.36
9	Left Side Cover Assy	KV323-01	↔	48	Crank Shaft Retainer E-Clip	QW120-01	↔	0.26
10	Spool Shaft Washer	XX038-02	↔	49	Crank Shaft Retainer	JX002-01	↔	0.57
11	Oscillate Drive Gear	KV112-01	↔	50	Crank Shaft Retainer Screw	JX107-01	↔	0.15
12	Oscillate Idle Gear	KV127-01	↔	51	Crank Shaft	KV008-01	↔	0.30
13	Oscillate Idle Gear Washer	KV121-01	↔	52	Ratchet	KV083-01	↔	0.95
14	Oscillate Idle Gear Post	JX098-01	↔	53	Ratchet Washer	QW111-01	↔	0.26
15	Spool Cover	KV051-01	↔	54	Drive Gear	KV012-01	↔	8.70
16	Spool Cover Screw	AV125-01	↔	55	Drag Disc ~A~	AV059-01	↔	1.65
17	Worm Shaft Assy	KV372-01	LV372-01	56	Drag ~D~ Washer (L)	KV045-01	↔	0.90
18	Line Guide Stabilizer	KV061-01	LV061-01	57	Drag Key Washer	KV048-01	↔	0.90
19	Worm Shaft Guide	KV016-01	LV016-01	58	Drag Disc ~B~	AV059-01	↔	1.50
20	Spool Shaft Bearing	CW017-01	↔	59	Drag ~D~ Washer (U)	AV045-01	↔	2.40
21	Clip Ring	KV080-01	↔	60	Crank Shaft Guide	KV066-01	↔	3.40
22	Spool Assy - IR320	KV321-01	N/A	61	Tension Knob Bushing	KV117-01	↔	0.59
22	Spool Assy - IR330	N/A	LV321-01	62	Right Side Cover	KV024-01	KV024-03	10.50
23	Kick Lever Guide Post E-Clip	NX092-01	↔	63	Thumb Screw O-Ring	JX073-01	↔	0.31
24	Frame Assy - IR320	KV301-01	N/A	64	Thumb Screw Washer	JX121-01	↔	0.21
24	Frame Assy - IR330	N/A	LV301-01	65	Thumb Screw Assy	KV374-01	KV374-02	1.50
25	Line Guide Carrier Assy.	KV347-01	↔	66	Right Side Cover Screw	QW123-01	↔	0.15
26	Line Guide Pawl	JX006-02	↔	67	Tension Knob Spring	JX105-01	↔	0.31
27	Line Guide Pawl Washer	JX035-01	↔	68	Spool Tension Washer	QW032-02	↔	0.52
28	Line Guide Carrier Screw	JX007-02	↔	69	Cushion Washer	JX082-01	↔	0.21
29	Worm Shaft Bushing	JX067-01	↔	70	Spool Tension Knob	XX033-01	↔	2.82
30	Worm Shaft E-Clip	QW120-01	↔	71	Crank Shaft Spacer	LV052-01	↔	0.70
31	Anti Reverse Pawl Assy	KV363-01	↔	72	Crank Shaft Bearing	TW058-01	↔	7.43
32	Anti Reverse Pawl Post	JX098-01	↔	73	Crank Shaft Washer	JX038-01	↔	0.31
33	Release Slider	KV039-01	↔	74	Spring "D" Washer	JX046-01	↔	0.87
34	Kick Lever	JX077-01	↔	75	Star Drag	KV055-01	↔	3.50
35	Kick Lever Spring	JX097-01	↔	76	Handle Washer	NX054-01	↔	0.26
36	Kick Lever Guide Post	JX102-01	↔	77	Handle Assy	KV318-01	↔	9.50
37	Pinion Yoke	JX025-01	↔	78	Handle Nut	QW003-01	↔	0.36
38	Pinion Yoke Spring	JX040-01	↔	79	Handle Nut Cap	JX034-02	↔	0.36
39	Release Slider Cam Spring	KV104-01	↔	80	Handle Nut Cap Screw	QW123-01	↔	0.15

MODEL	EFFECTIVE DATE OF	DISCONTINUED:
INTRODUCED: 1998	PARTS LIST/DIAGRAM: Sept. '98	N / A

Prices subject to change without notice. Prices do not include postage and handling.

PLEASE ORDER BY PART NUMBER

Zebco, P.O. Box 270, Tulsa, Ok. 74101; 918-831-6965 Phone or 800-FIXREEL (349-7335) FAX

