



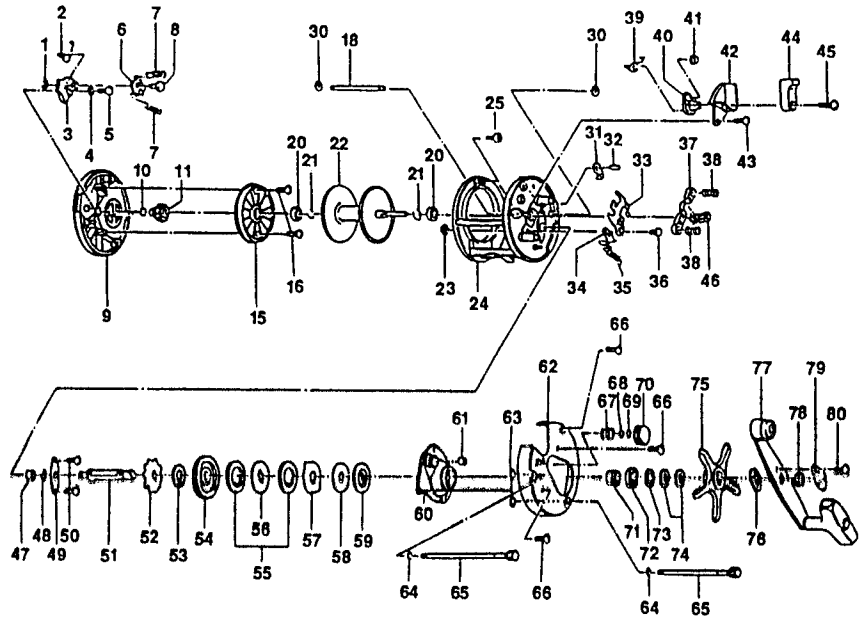
IR325 / IR335 Iron Bigwater

SPECIFICATIONS:

IR325: Hvy FW / Med Lt. SW
 IR335: X Hvy FW / Med. SW
 Line Cap.: 300 yds / 20 lb (IR325)
 400 yds / 20 lb (IR335)
 5.2:1 Gear Ratio
 17.5 oz. (IR325) / 17.8 oz. (IR335)
 Lever Clutch Spool Release
 Posi-Lok Anti-Reverse (15 Point)
 3 Ball Bearings
 Inches Per Handle Turn (IPT) = 27.2

FEATURES:

Machined, 1-Piece Aluminum Frame
 Oversized, Multi-Disc (6 washer) drag system
 Audible On/Off Bait Clicker
 Non-Levelwind Retrieve
 Anodized-Ceramic coated frame
 Brass Magnum Gears
 Stainless Steel Ball Bearings
 Counterbalanced T-style Handle Knob
 Aluminum Side Plates
 Machine Forged Aluminum Spool
 COLOR: Beige



Key			Part No.			Key			Part No.		
No.	Description	IR325	IR335	Price	No.	Description	IR325	IR335			
1	Click Pawl Post E-Clip	NX092-01	⇔	0.30	46	Pinion Gear	KV011-01	LV011-01			
2	Bait Click Lever Spring	KV022-01	⇔	0.30	47	Crank Shaft Bushing (L)	JX017-01	⇔			
3	Bait Click Lever	KV109-01	⇔	0.75	48	Crank Shaft Retainer E-Clip	QW120-01	⇔			
4	Bait Click Lever Washer	KV038-01	⇔	0.30	49	Crank Shaft Retainer	JX002-01	⇔			
5	Bait Click Lever Screw	AV125-01	⇔	0.72	50	Crank Shaft Retainer Screw	JX107-01	⇔			
6	Bait Click Pawl	KV114-01	⇔	0.80	51	Crank Shaft	KV008-01	⇔			
7	Bait Click Spring	KV110-01	⇔	0.21	52	Ratchet	KV083-01	⇔			
8	Bait Click Pawl Post	KV098-01	⇔	0.45	53	Ratchet Washer	QW111-01	⇔			
9	Left Side Cover Assy	KV323-01	⇔	15.00	54	Drive Gear	KV012-01	⇔			
10	Spool Shaft Washer	XX038-02	⇔	0.27	55	Drag Disc ~A~	AV059-01	⇔			
11	Oscillate Drive Gear	KV112-01	⇔	0.75	56	Drag ~D~ Washer (L)	KV045-01	⇔			
15	Spool Cover	KV051-01	⇔	6.65	57	Drag Key Washer	KV048-01	⇔			
16	Spool Cover Screw	AV125-01	⇔	0.72	58	Drag Disc ~B~	KV059-01	⇔			
18	Line Guard	NV061-01	PV061-01	1.00	59	Drag ~D~ Washer (U)	AV045-01	⇔			
20	Spool Shaft Bearing	CW017-01	⇔	7.75	60	Crank Shaft Guide	KV066-01	⇔			
21	Clip Ring	KV080-01	⇔	0.26	61	Tension Knob Bushing	JX117-01	⇔			
22	Spool Assy	KV321-01	LV321-01	15.75	62	Right Side Cover	KV024-05	KV024-07			
23	Kick Lever Guide Post E-Clip	NX092-01	⇔	0.31	63	Thumb Screw O-Ring	JX073-01	⇔			
24	Frame Assy	NV301-01	PV301-01	26.20	64	Thumb Screw Washer	JX121-01	⇔			
25	Left Side Cover Screw	NV123-01	⇔	0.15	65	Thumb Screw Assy	KV374-01	KV374-02			
30	Line Guard E-Clip	QW120-01	⇔	0.27	66	Right Side Cover Screw	QW123-01	⇔			
31	Anti Reverse Pawl Assy	KV363-01	⇔	2.75	67	Tension Knob Spring	JX105-01	⇔			
32	Anti Reverse Pawl Post	JX098-01	⇔	0.42	68	Spool Tension Washer	QW032-02	⇔			
33	Release Slider	KV039-01	⇔	1.50	69	Cushion Washer	JX082-01	⇔			
34	Kick Lever	JX077-01	⇔	0.59	70	Spool Tension Knob	XX033-01	⇔			
35	Kick Lever Spring	JX097-01	⇔	0.15	71	Crank Shaft Spacer	LV052-01	⇔			
36	Kick Lever Guide Post	JX102-01	⇔	0.91	72	Crank Shaft Bearing	TW058-01	⇔			
37	Pinion Yoke	JX025-01	⇔	0.54	73	Crank Shaft Washer	JX038-01	⇔			
38	Pinion Yoke Spring	JX040-01	⇔	0.22	74	Spring "D" Washer	JX046-01	⇔			
39	Release Slider Cam Spring	KV104-01	⇔	0.25	75	Star Drag	KV055-01	⇔			
40	Release Slider Cam	KV141-01	⇔	1.00	76	Handle Washer	NX054-01	⇔			
41	Release Slider Guide Bushing	JX068-01	⇔	1.11	77	Handle Assy	KV318-01	⇔			
42	Release Lever Cover	KV143-01	⇔	1.00	78	Handle Nut	QW003-01	⇔			
43	Release Slider Screw	XX050-01	⇔	0.15	79	Handle Nut Cap	JX034-02	⇔			
44	Release Lever	KV142-01	⇔	1.95	80	Handle Nut Cap Screw	QW123-01	⇔			
45	Release Lever Screw	KV053-01	⇔	0.90							

MODEL

EFFECTIVE DATE OF