



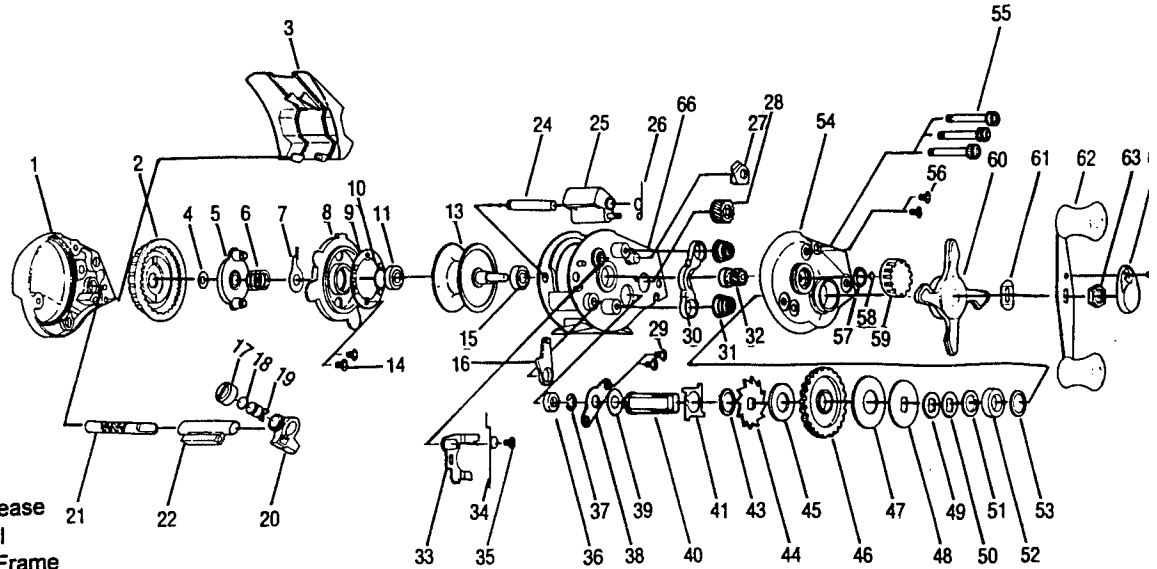
LPSS3

SPECIFICATIONS:

Med. FW
 100 yds / 12 lb Line
 5.1:1 Gear Ratio
 Weight - 9 oz.
 3 Ball Bearings

FEATURES:

Thumb Bar Spool Release
 Magnetic Cast Control
 Lightweight Graphite Frame
 Flip-Up Hood for easy line access
 Aluminum Spool
 Ergonomic shape
 Color: Black



Key No.	Description	Part No.	Price	Key No.	Description	Part No.	Price
1	Left side Cover	VVW023-07	5.68	35	Release Slider Screw	VVW076-01	.7
2	Magnet Control Dial	VVW026-02	1.53	36	Crank Shaft Bushing	VVW103-01	.9
3	Hood	VVW027-07	2.54	37	Crank Shaft E-Ring	QW120-01	.3
4	Magnet Dial Friction Ring	NX105-01	.62	38	Crank Shaft Retainer	VVW002-01	1.0
5	Magnet Slide Cam	VVW028-01	.96	39	Crank Shaft Washer	VVW104-01	.3
6	Magnet Slide Cam Spring	NX071-01	.69	40	Crank Shaft	VVW008-01	3.0
7	Magnet Dial Click Claw	VVW108-01	.91	41	Trip Ratchet	GW083-01	2.2
8	Spool Cover	VVW051-01	6.84	43	Ratchet Washer	VVW111-01	.1
9	Magnet Plate Assy	VVW330-01	6.84	44	Anti Reverse Ratchet	VVW091-01	.1
10	Spool Tension Shim Washer	VVW082-01	.42	45	Drive Gear Washer	VVW110-01	.1
11	Spool Shaft Bearing	VVW106-01	.71	46	Drive Gear	VVW012-01	8.0
13	Spool Assy	VVW321-21	14.48	47	Drag Disc	VVW059-01	2.7
14	Magnet Plate Screw	QW076-01	.65	48	Drag "D" Washer	VVW045-01	1.2
15	Spool Shaft Bearing	VVW106-01	.69	49	Spring "D" Washer	QW046-02	1.0
16	Link	VVW084-01	1.01	50	Spring "D" Washer	QW046-02	1.0
17	Line Guide Carrier Screw	QW007-02	2.22	51	Bearing Washer	VVW035-01	1.0
18	Line Guide Pawl Washer	QW035-00	.26	52	Crank Shaft Bearing	VVW058-01	8.0
19	Line Guide Pawl	VVW006-01	2.22	53	Bearing Washer	VVW035-01	1.0
20	Line Guide Carrier	VVW347-01	1.11	54	Right Side Cover	VVW024-07	6.0
21	Worm Shaft	VVW072-01	5.68	55	Thumb Screw	VVW374-01	1.0
22	Worm Shaft Guide	VVW016-01	1.11	56	Right Side Cover Screw	QW050-02	.1
24	Thumb Bar Pin	VVW050-01	1.28	57	Tension Knob O-Ring	VVW101-01	.1
25	Thumb Bar Assy	VVW309-04	.69	58	Tension Knob Washer	VVW032-01	.1
26	Thumb Bar Spring	VVW022-01	.91	59	Tension Knob	VVW033-01	.1
27	Anti Reverse Pawl Assy	VVW363-01	1.80	60	Drag Star	VVW055-01	3.0
28	Level Wind Gear	VVW085-01	.96	61	Handle Washer	NX054-01	.1
29	Crank Shaft Retainer Screw	VVW107-01	.69	62	Handle Assy	RW318-04	9.0
30	Pinion Yoke	VVW025-01	.96	63	Handle Nut	QW003-01	1.0
31	Pinion Yoke Spring	VVW040-01	.54	64	Handle Nut Cap	QW034-01	.1
32	Pinion Gear	VVW311-01	3.40	65	Handle Nut Cap Screw	QW123-03	.1
33	Release Slider	VVW039-01	1.28	66	Frame	VVW001-01	3.7
34	Release Slider Spring	VVW109-01	1.53				

MODEL	EFFECTIVE DATE OF	
INTRODUCED: 1995	PARTS LIST/DIAGRAM: July 1995	DISCONTINUED: 1996

Prices subject to change without notice. Prices do not include postage and handling.

PLEASE ORDER BY PART NUMBER

Zebco, P.O. Box 270, Tulsa, Ok. 74101; 918-831-6965 Phone or 800-FIXREEL (349-7335) FAX

