



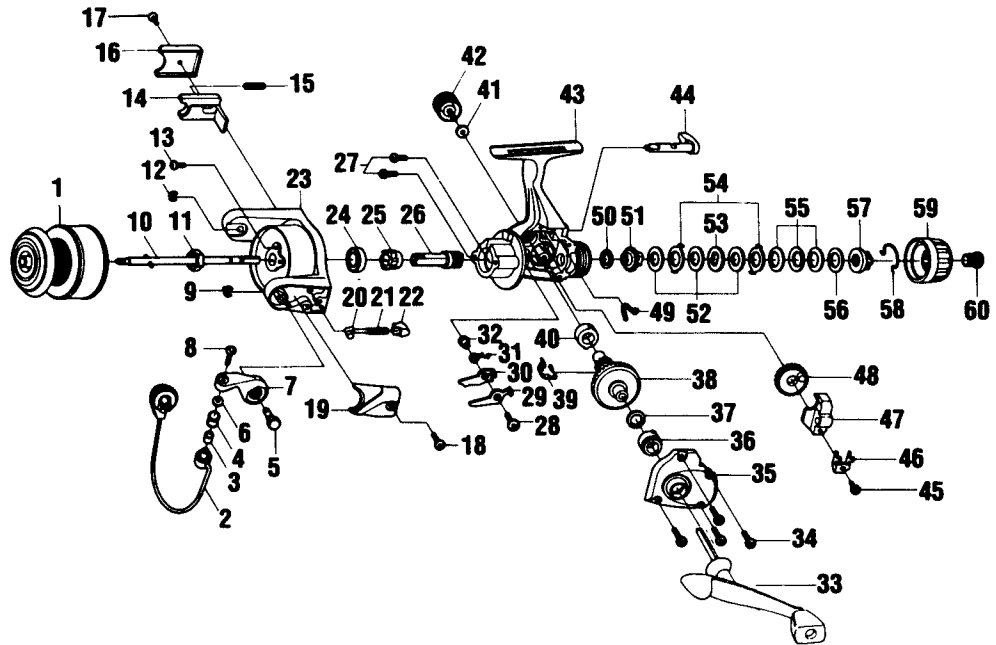
LASER LS22

SPECIFICATIONS:

- 1 Ball Bearing
- 140 yds/4 lb. Line Capacity
- 4.4:1 Ratio
- 7.9 oz. Weight
- Light Fresh Water

FEATURES:

- Rear Drag System
- Three-Way Silent System
- Interchangeable Balanced Handle
- Internal Bail Trip
- Twist Reducing Line Roller
- Brass Pinion Gear



Key No.	Part No.	Description	Price	Key No.	Part No.	Description	Price
1	JH321-31	Spool Assembly	8.75	31	GU061-01	Anti-Reverse Pawl Spring	.37
2	JH347-04	Bail Assembly	3.77	32	GU091-01	Anti-Reverse Pawl Post	.27
3	MT016-01	Line Roller Bushing	.77	33	JH318-14	Handle Assembly	6.40
4	KH004-02	Line Roller	1.24	34	GU057-01	Body Cover Screw	.15
5	GU051-03	Arm Lever Pin	1.06	35	JH023-09	Body Cover	1.75
6	GU105-07	Line Roller Washer	.15	36	GU157-01	Gear Shaft Ball Bearing	6.95
7	JH007-01	Arm Lever	.79	37	GU105-08	Adjustment Washer	.15
8	AQ108-04	Line Slider Screw	.31	38	GU012-01	Drive Gear	2.97
9	GH034-01	E-Clip	.32	39	GU086-01	Silent Cam	.42
10	JU315-02	Main Shaft Assembly	1.06	40	GU027-01	Gear Shaft Bushing	.84
11	GU006-01	Rotor Nut	.32	41	GU105-01	Handle Screw Washer	.10
12	GH034-01	E-Clip	.32	42	GH073-03	Handle Screw	.64
13	GU077-08	Rotor Nut Lock Screw	.15	43	JH001-09	Body	3.25
14	HU019-01	Kick Lever	.54	44	KH090-01	Anti-Reverse Lever	1.53
15	KQ049-04	Kick Lever Spring	.32	45	JU100-01	Oscillator Retainer Screw	.27
16	HU046-01	Kick Lever Cover	.27	46	HU078-01	Oscillator Slide Retainer	.27
17	GU077-02	Kick Lever Cover Screw	.15	47	HU025-01	Oscillator Slider	1.06
18	GU077-02	Arm Lever Cover Screw	.15	48	HU053-01	Oscillator Gear	1.06
19	JH087-01	Arm Lever Spring Cover	.21	49	GU089-01	Anti-Reverse Lever Spring	.54
20	KQ031-01	Arm Lever Spring Pin	.27	50	GU105-34	Drag Friction Washer "A"	.81
21	KQ049-05	Arm Lever Spring	.32	51	HU075-01	Drag Click Gear	.64
22	QL020-01	Arm Lever Spring Holder	.32	52	GU105-35	Drag Washer "B"	.94
23	HU009-21	Rotor	2.60	53	HU080-01	Drag Washer "D"	.54
24	AQ028-01	Ball Bearing	6.95	54	HU081-01	Drag Washer "A"	.54
25	HU060-01	Anti-Reverse Ratchet	2.12	55	HU043-01	Drag Spring	.69
26	GU011-02	Pinion	2.07	56	GU105-24	Drag Washer	.94
27	GU077-01	Bearing Screw	.15	57	HU066-01	Drag Nut	.64
28	GU077-05	Anti-Reverse Pawl Screw	.15	58	HU070-01	Drag Retainer Clip	1.16
29	GU063-01	Anti-Reverse Pawl "A" (Cntr)	.47	59	JH032-01	Drag Knob	1.60
30	GU074-01	Anti-Reverse Pawl "B" (On)	.47	60	JH101-01	Drag Knob Screw	1.33

MODEL INTRODUCED	Dec. 1997	EFFECTIVE DATE OF PARTS LIST/DIAGRAM	Dec. 1997	DISCONTINUED	N/A
-------------------------	-----------	---	-----------	---------------------	-----

Prices subject to change without notice. Prices do not include postage and handling.

PLEASE ORDER BY PART NUMBER Zebco Division Brunswick Corporation, Box 270, Tulsa, OK 74101 USA 918-831-6965

