



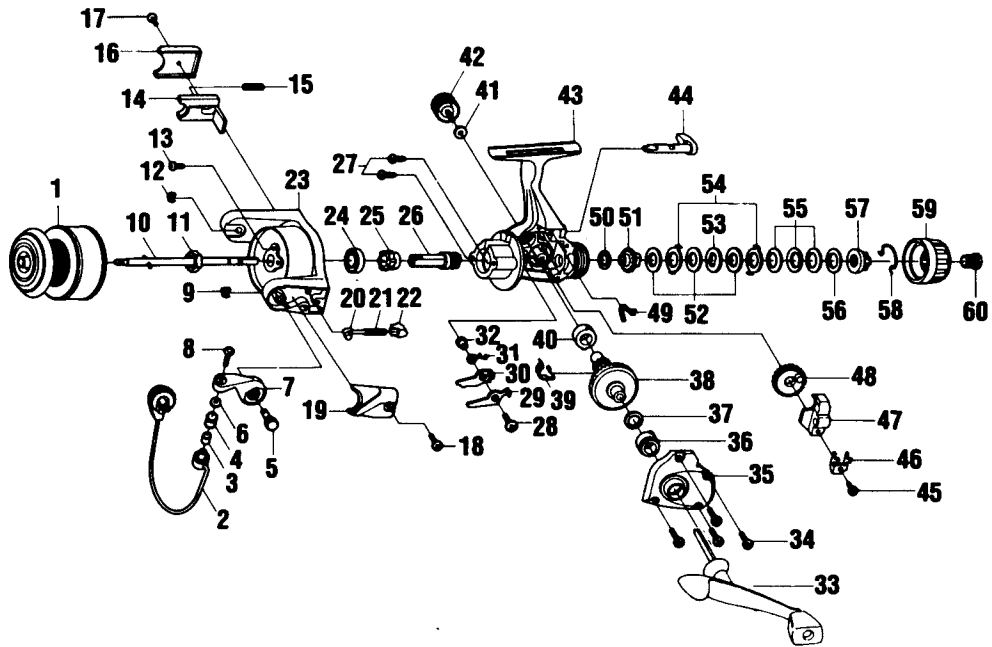
LASER LS23

SPECIFICATIONS:

- 1 Ball Bearing
- 160 yds/8 lb. Line Capacity
- 4.0 Ratio
- 10.2 oz. Weight
- Medium Lt. Fresh Water

FEATURES:

- Rear Drag System
- Three-Way Silent System
- Interchangeable Balanced Handle
- Internal Bail Trip
- Twist Reducing Line Roller
- Brass Pinion Gear



Key No.	Part No.	Description	Price	Key No.	Part No.	Description	Price
1	JH321-32	Spool Assembly	8.75	31	JU061-01	Anti-Reverse Pawl Spring	1.06
2	JH347-09	Bail Assembly	3.77	32	GU091-02	Anti-Reverse Pawl Post	.74
3	MT016-01	Line Roller Bushing	.77	33	JH318-15	Handle Assembly	6.40
4	KH004-02	Line Roller	1.24	34	JU057-04	Body Cover Screw	.64
5	GU051-03	Arm Lever Pin	1.06	35	KH023-09	Body Cover	1.75
6	GU105-07	Line Roller Washer	.15	36	AQ028-02	Gear Shaft Ball Bearing	6.28
7	JH007-01	Arm Lever	.79	37	GU105-13	Adjustment Washer	.66
8	AQ108-04	Line Slider Screw	.31	38	JU012-02	Drive Gear	3.55
9	GH034-01	E-Clip	.32	39	JU086-01	Silent Cam	1.16
10	JU315-01	Main Shaft Assembly	1.85	40	JU027-01	Gear Shaft Bushing	1.65
11	RU006-01	Rotor Nut	.93	41	GU105-01	Handle Screw Washer	.10
12	GH034-01	E-Clip	.32	42	GH073-03	Handle Screw	.64
13	GU077-08	Rotor Nut Lock Screw	.15	43	KH001-09	Body	3.25
14	JU019-01	Kick Lever	1.06	44	KH090-01	Anti-Reverse Lever	1.53
15	KQ049-06	Kick Lever Spring	.26	45	JU100-01	Oscillator Retainer Screw	.27
16	JU046-01	Kick Lever Cover	.79	46	JU078-01	Oscillator Slide Retainer	.32
17	GU077-02	Kick Lever Cover Screw	.15	47	JU025-01	Oscillator Slider	1.85
18	GU077-02	Arm Lever Cover Screw	.15	48	JU053-01	Oscillator Gear	1.85
19	KH087-01	Arm Lever Spring Cover	.21	49	GU089-01	Anti-Reverse Lever Spring	.54
20	NL031-01	Arm Lever Spring Pin	.27	50	GU105-32	Drag Friction Washer "A"	.79
21	KQ049-02	Arm Lever Spring	.91	51	JU075-01	Drag Click Gear	1.33
22	QL020-01	Arm Lever Spring Holder	.32	52	GU105-33	Drag Washer "B"	.91
23	JU009-21	Rotor	2.60	53	JU080-01	Drag Washer "D"	1.06
24	AQ028-06	Ball Bearing	6.47	54	JU081-01	Drag Washer "A"	1.06
25	JU060-01	Anti-Reverse Ratchet	2.49	55	JU043-01	Drag Spring	1.38
26	JU011-01	Pinion	2.44	56	GU105-19	Drag Washer	.99
27	JU077-01	Bearing Screw	.64	57	JU066-01	Drag Nut	1.33
28	GU077-05	Anti-Reverse Pawl Screw	.15	58	JU083-01	Drag Click Spring	1.97
29	JU063-01	Anti-Reverse Pawl "A" (Cntr)	1.01	59	KH032-01	Drag Knob	1.55
30	JU074-01	Anti-Reverse Pawl "B" (On)	1.01	60	KH101-01	Drag Knob Screw	1.33

MODEL INTRODUCED	Dec. 1997	EFFECTIVE DATE OF PARTS LIST/DIAGRAM	Dec. 1997	DISCONTINUED	N/A
-------------------------	-----------	---	-----------	---------------------	-----

Prices subject to change without notice. Prices do not include postage and handling.

PLEASE ORDER BY PART NUMBER Zebco Division Brunswick Corporation, Box 270, Tulsa, OK 74101 USA 918-831-6965

