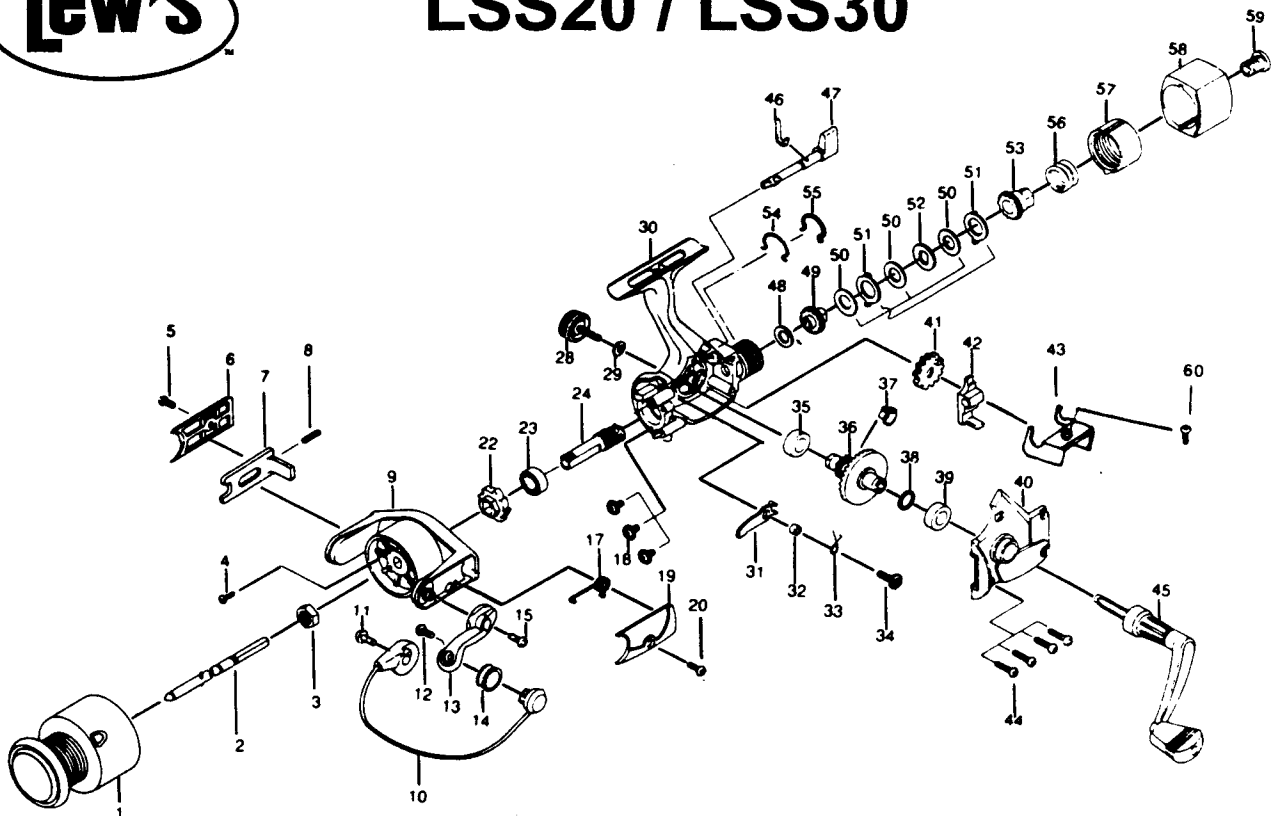




LSS20 / LSS30



The parts listed below are the only service parts available for the LSS20 and LSS30.

KEY NO.	DESCRIPTION	Part No. LSS20	Part No. LSS30	KEY NO.	DESCRIPTION	Part No. LSS20	Part I LSS3
3	ROTOR NUT	MH006-01	←	24	PINION GEAR	MH011-01	←
4	ROTOR NUT LOCK SCREW	MH094-01	←	28	HANDLE SCREW CAP	MH073-01	←
5	KICK LEVER COVER SCREW	MH085-01	←	29	HANDLE SCREW CAP WASHER	MH105-01	←
6	KICK LEVER COVER	MH024-01	←	31	ANTI REVERSE PAWL	MH063-01	←
7	KICK LEVER	MH019-01	MH019-31	32	ANTI REVERSE PAWL POST	MH091-01	←
8	KICK LEVER SPRING	MH049-01	←	33	ANTI REVERSE PAWL SPRING	MH061-01	←
9	ROTOR	MH009-01	MH009-31	34	ANTI-REVERSE PAWL SCREW	MH077-01	←
10	BAIL ASSEMBLY	MH347-01	MH347-31	35	BODY BALL BEARING	MH027-01	←
11	BAIL HOLDER SCREW	MH044-01	←	36	DRIVE GEAR	MH012-01	←
12	LINE SLIDER SCREW	MH108-01	←	37	SILENT CAM	MH086-01	←
13	ARM LEVER	MH007-01	←	38	DRIVE GEAR ADJ WASHER	MH026-01	←
14	LINE ROLLER BALL BEARING	MH004-01	←	39	BODY COVER BALL BEARING	MH027-01	←
15	ARM LEVER SCREW	MH044-01	←	41	OSCILLATOR GEAR	MH053-01	←
17	BAIL SPRING	MH022-01	←	42	OSCILLATOR SLIDER	MH025-01	←
18	BEARING SCREW	MH041-01	←	44	BODY COVER SCREW	MH057-01	←
19	BAIL SPRING COVER	MH046-01	←	45	HANDLE ASSEMBLY	MH318-01	←
20	COVER SCREW	MH085-01	←	46	ANTI REVERSE LEVER SPRING	MH089-01	←
22	RATCHET GEAR	MH060-01	←	47	ANTI REVERSE LEVER	MH090-01	←
23	BALL BEARING	MH028-01	←	60	MAIN SHAFT SCREW	MH100-01	←

Prices subject to change without notice. Prices do not include postage and handling.

PLEASE ORDER BY PART NUMBER

Rev. 6/95

Zebco Division Brunswick Corporation, Box 270, Tulsa, OK 74101 USA 918-836-5581

