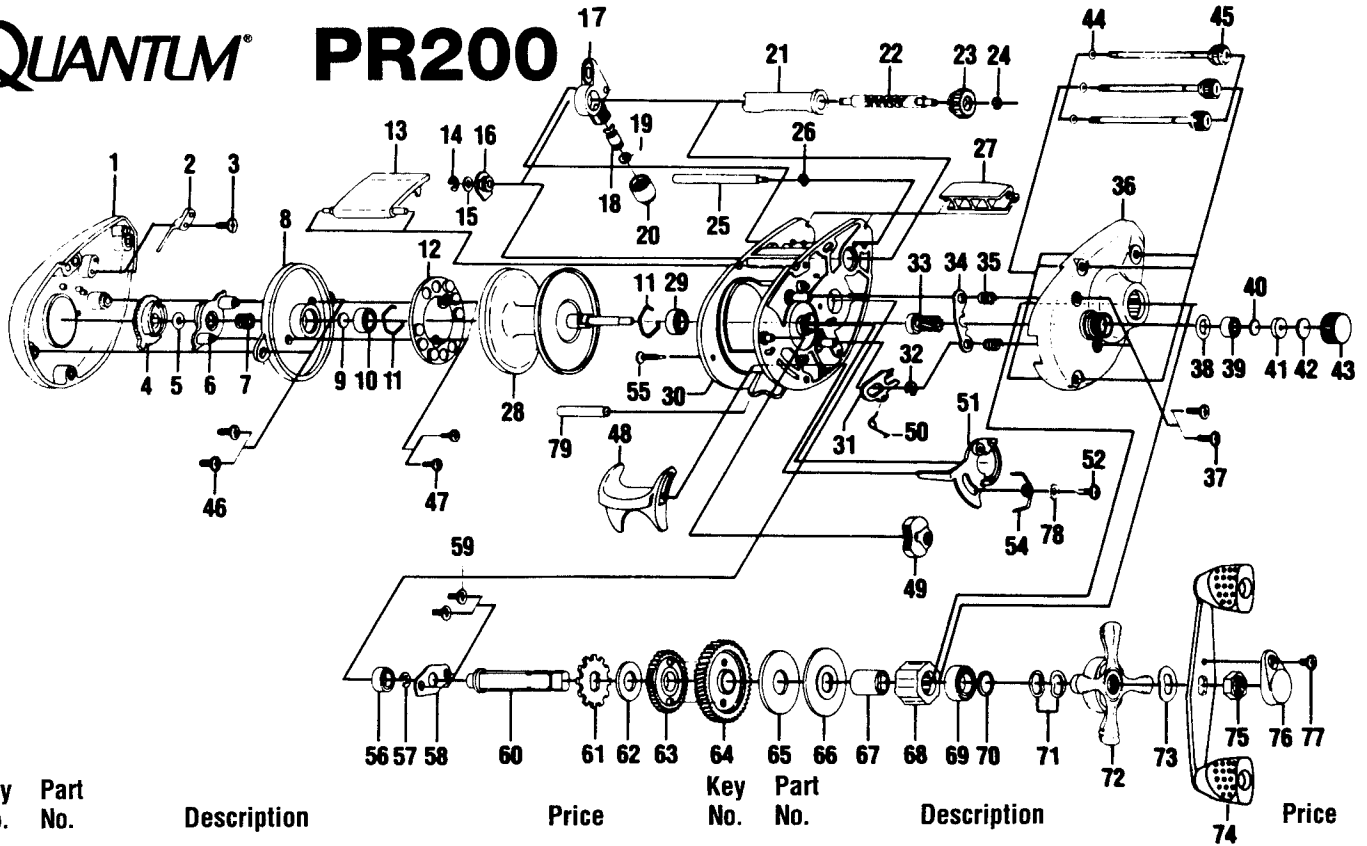


QUANTUM[®] PR200



| Key No. | Part No. | Description | Price | Key No. | Part No. | Description | Price |
|---------|----------|---------------------------|-------|---------|----------|-----------------------------|-------|
| 1 | QW023-06 | Left Side Cover | 7.15 | 40 | QW032-01 | Washer - Spool Tension | .50 |
| 2 | QW108-01 | Clicker | .65 | 41 | QW081-01 | Collar | 3.90 |
| 3 | QW125-01 | Screw - Clicker | .45 | 42 | QW082-01 | Cushion Washer - Spool | .65 |
| 4 | QW026-02 | Magnet Control Dial | 1.00 | 43 | QW033-01 | Spool Tension Knob | 1.85 |
| 5 | NX105-01 | Dial Friction Ring | .60 | 44 | QW073-01 | Ring - Thumb Screw Ret. | .70 |
| 6 | QW028-01 | Side Cam | .70 | 45 | QW374-01 | Thumb Screw | 2.85 |
| 7 | NX071-01 | Side Cam Spring | .50 | 46 | QW125-01 | Screw - Spool Cover | .45 |
| 8 | QW051-01 | Spool Cover | 1.70 | 47 | QW076-01 | Screw - Magnet Ring | .65 |
| 9 | QW032-01 | Spool Tension Shim | .50 | 48 | SW009-01 | Thumb Bar | .65 |
| 10 | QW017-01 | Bushing | .20 | 49 | SW087-01 | Flippin' Switch | .65 |
| 11 | QW080-01 | Clip Ring | .50 | 50 | QW097-01 | Spring - Kick Lever | .45 |
| 12 | QW330-01 | Magnet Plate Assy. | 2.80 | 51 | SW039-01 | Release Slider | 1.85 |
| 13 | QW027-12 | Hood | 2.40 | 52 | QW076-01 | Screw Release Slider | .65 |
| 14 | NX092-01 | E-Clip (Worm Shaft) | .25 | 54 | SW104-01 | Spring - Release Slider | .45 |
| 15 | QW035-03 | Washer (Worm Shaft) | .25 | 55 | SW050-01 | Thumb Bar Ret. Screw | .65 |
| 16 | QW067-01 | Worm Shaft Bushing | .65 | 56 | QW017-01 | Crankshaft Bushing | .20 |
| 17 | QW347-01 | Line Guide Carrier | 2.70 | 57 | QW120-01 | E-Ring - Crankshaft | .25 |
| 18 | QW006-01 | Line Guide Pawl | 2.70 | 58 | QW002-01 | Retainer - Crankshaft | .80 |
| 19 | QW035-03 | Washer (L/G Pawl) | .25 | 59 | QW107-01 | Screw - Crankshaft Retainer | .45 |
| 20 | QW007-C1 | Line Guide Carrier Screw | .25 | 60 | QW008-01 | Crankshaft | 2.30 |
| 21 | QW016-01 | Worm Shaft Guide | 1.10 | 61 | QW083-01 | Trip Ratchet | .35 |
| 22 | QW072-01 | Worm Shaft | 4.30 | 62 | QW111-01 | Washer | .25 |
| 23 | QW085-01 | Level Wind Gear | .85 | 63 | QW112-01 | Gear - LW Idler | .85 |
| 24 | NX090-01 | E-Ring (L/W Gear) | .40 | 64 | SW012-01 | Drive Gear | 10.35 |
| 25 | QW061-01 | Stabilizer Bar | 1.55 | 65 | QW059-01 | Drag Disc | 1.65 |
| 26 | NX090-01 | E-Ring (Stabilizer Bar) | .40 | 66 | QW045-01 | Drag Washer | .80 |
| 27 | QW099-13 | Front Support | 2.80 | 67 | QW052-01 | Clutch Sleeve | 2.75 |
| 28 | QW321-01 | Spool Assy. | 14.42 | 68 | QW063-01 | Anti-Reverse Clutch | 10.50 |
| 29 | QW017-01 | Bushing - Spool Shaft (R) | .20 | 69 | TW058-01 | Bearing - Crankshaft Top | 7.00 |
| 30 | SW001-01 | Frame | 5.95 | 70 | QW035-01 | Washer - Crankshaft | .45 |
| 31 | SW077-01 | Kick Lever | .90 | 71 | QW046-02 | Spring 'D' Washer | .95 |
| 32 | QW120-01 | E-Ring (Kick Lever) | .25 | 72 | QW055-01 | Drag Star | 1.85 |
| 33 | SW311-01 | Pinion Gear | 10.04 | 73 | QW054-01 | Handle Washer | .70 |
| 34 | SW025-01 | Pinion Yoke | .65 | 74 | TW318-04 | Handle Assy | 5.60 |
| 35 | QW040-01 | Spring-Pinion Yoke | .65 | 75 | QW003-01 | Handle Nut | .35 |
| 36 | SW024-12 | Right Side Cover | 5.45 | 76 | QW034-02 | Handle Nut Cap | .65 |
| 37 | QW053-01 | Screw (Rt. Side Cover) | .65 | 77 | QW123-01 | Handle Nut Cap Screw | .15 |
| 38 | QW101-01 | Tension Knob Ring | .25 | 78 | SW121-01 | Washer - Release Slider | .45 |
| 39 | QW117-01 | Bushing - Tension Knob | .20 | 79 | SW094-01 | Spacer | 4.30 |

Prices subject to change without notice. Prices do not include postage and handling.

PLEASE ORDER BY PART NUMBER

Rev. 6/95

Zebco Division Brunswick Corporation, Box 270, Tulsa, OK 74101 USA 918-836-5581

