

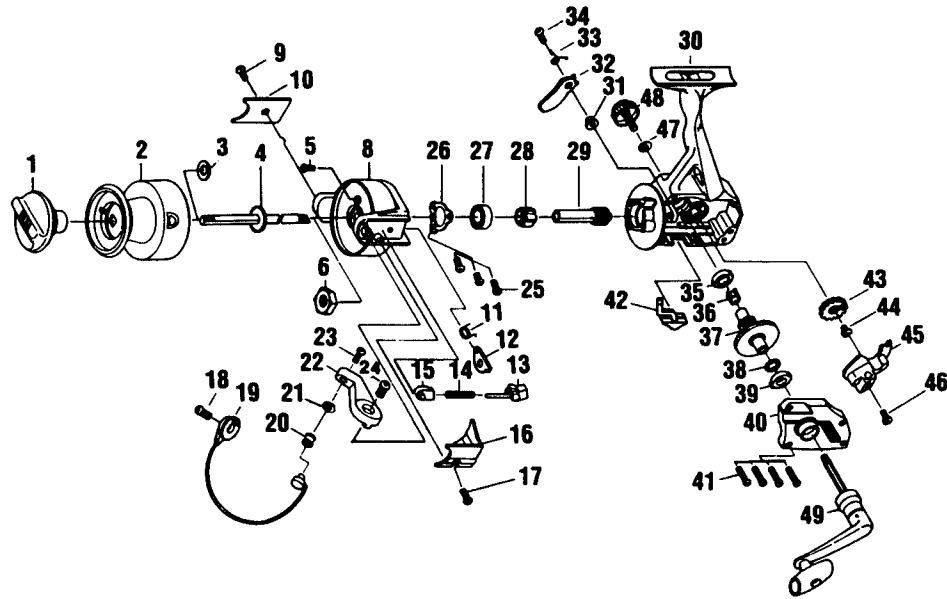
QUANTUM[®] QL6A

SPECIFICATIONS:

Medium Heavy Freshwater
 225 yds./14 lb. Line Capacity
 Front Drag
 4.7:1 Ratio
 17.6 oz.
 1 Ball Bearing

FEATURES:

Aluminum Long Stroke Spool
 Ball Bearing Drive
 Lightweight Graphite Body
 Coil-Type Bail Spring
 Oversized Line Roller with Twist Reducer
 Color: Dark Brown



Key No.	Part No.	Description	Price	Key No.	Part No.	Description	Price
1	UL332-01	Drag Knob Assembly	3.47	30	VL001-55	Body	4.72
2	UL321-16	Spool Assembly	8.80	31	UL091-01	A/R Pawl Post	.74
3	UL030-01	Spool Adjustment Washer	.36	32	UL063-01	A/R Pawl	1.26
4	UL315-01	Main Shaft Assembly	3.52	33	UL061-01	A/R Pawl Spring	1.13
5	GU077-08	Rotor Nut Lock Screw	.15	34	UL077-01	A/R Pawl Screw	.26
6	UL006-01	Rotor Nut	1.13	35	UL013-01	Body Bushing	1.13
8	UL009-06	Rotor	4.09	36	UL086-01	Silent Cam	.68
9	GU077-02	Kick Lever Cover Screw	1.11	37	VL012-01	Drive Gear	3.75
10	UL024-01	Kick Lever Cover	.76	38	UL026-01	Drive Gear Adj. Washer	.68
11	UL049-01	Kick Lever Spring	.74	39	UL013-01	Body Cover Bushing	1.13
12	UL019-01	Kick Lever	1.42	40	VL023-55	Body Cover	3.03
13	UL031-01	Bail Spring Shaft	.74	41	JU057-04	Body Cover Screw	.64
14	UL022-01	Bail Spring	1.13	42	UL059-01	A/R Lever	1.13
15	UL020-01	Bail Spring Holder	.68	43	UL053-01	Oscillator Gear	2.39
16	UL087-01	Bail Spring Cover	.70	44	UL158-01	Oscillator Gear Bushing	.52
17	GU077-02	Bail Spring Cover Screw	.15	45	UL025-01	Oscillator Slider	2.42
18	UL051-01	Bail Holder Screw	.74	46	UL100-01	Main Shaft Screw	.26
19	UL347-52	Bail Assembly	7.02	47	UL105-01	Handle Screw Washer	.57
20	VL004-01	Line Roller	2.21	48	XU073-02	Handle Screw Cap	1.70
22	VL007-02	Arm Lever	1.16	49	UL318-52	Handle Assembly	6.58
23	UL108-01	Bail Screw	.76				
24	UL051-01	Arm Lever Screw	.74				
25	JU077-01	Bearing Plate Screw	.64				
27	AQ028-05	Ball Bearing	7.00				
28	UL060-01	Ratchet	3.24				
29	UL011-01	Pinion Gear	6.82				

MODEL INTRODUCED 1998	EFFECTIVE DATE OF PARTS LIST/DIAGRAM July 1998	DISCONTINUED N/A
------------------------------	---	-------------------------

Prices subject to change without notice. Prices do not include postage and handling.

PLEASE ORDER BY PART NUMBER Zebco Division Brunswick Corporation, Box 270, Tulsa, OK 74101 USA 918-831-6965

