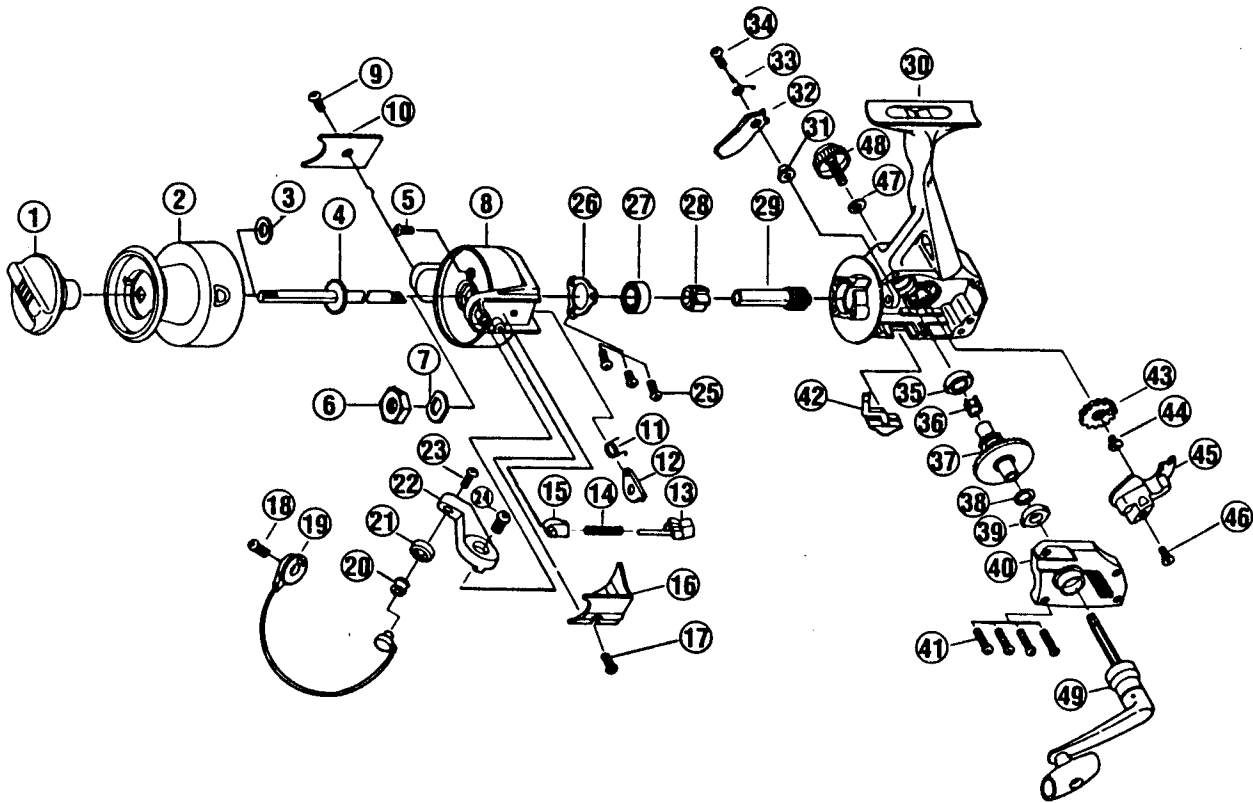


QUANTUM[®] SR 6



(SR6)

KEY NO.	PART NO.	DESCRIPTION	PRICE	KEY NO.	PART NO.	DESCRIPTION	PRICE
1	UL332-4	DRAG KNOB ASSY.	3.37	27	UL028	BALL BEARING	8.60
2	UL321-4	SPOOL ASSY.	8.55	28	UL060	RATCHET	3.15
3	UL046	SPOOL ADJUSTMENT WASHER	.66	29	UL011	PINION GEAR	6.62
4	UL315	MAIN SHAFT ASSY.	3.42	30	UL001-4	BODY	4.45
5	UL094	ROTOR NUT LOCK SCREW	.66	31	UL091	STOPPER BUSHING	.72
6	UL006	ROTOR NUT	1.10	32	UL063	STOPPER	1.22
8	UL009-4	ROTOR	3.85	33	UL081	STOPPER SPRING	1.10
9	UL085	KICK LEVER COVER SCREW	.72	34	UL083	STOPPER SCREW	.72
10	UL024-4	KICK LEVER COVER	.72	35	UL013	BODY BUSHING	1.10
11	UL049	KICK LEVER SPRING	.72	36	UL086	SILENT CAM	.66
12	UL019	KICK LEVER	1.38	37	UL012	DRIVE GEAR	3.53
13	UL031	SPRING SHAFT	.72	38	UL026	DRIVE GEAR ADJUST WASHER	1.22
14	UL022	BAIL SPRING	1.10	39	UL013	BODY COVER BUSHING	1.10
15	UL020	SPRING HOLDER	.66	40	UL023-4	BODY COVER	2.85
16	UL087-4	BAIL SLPRING COVER	.66	41	UL057	BODY COVER SCREW	.72
17	UL085-4	BAIL SPRING COVER SCREW	.72	42	UL059	STOPPER LEVER	1.10
18	UL051-4	BAIL HOLDER SCREW	.72	43	UL053-4	OSCILLATOR GEAR	2.32
19	UL347	BAIL ASSY.	6.62	44	UL078	OSCILLATOR GEAR BUSHING	.50
20	UL004	LINE ROLLER	2.15	45	UL081-4	OSCILLATOR SLIDER	2.32
22	UL007	ARM LEVER	1.10	46	UL161	OSCILLATOR SCREW	.88
23	UL108	BAIL SCREW	.72	47	UL076	HANDLE CAP WASHER	.56
24	UL107-4	ARM LEVER SCREW	.72	48	UL073	HANDLE SCREW CAP	1.60
25	UL080-4	BEARING PLATE SCREW	.66	49	UL318	HANDLE ASSY.	5.80

Prices subject to change without notice. Prices do not include postage and handling.

PLEASE ORDER BY PART NUMBER

Rev. 6/94

Zebco Division Brunswick Corporation, Box 270, Tulsa, OK 74101 USA 918-836-5581

