

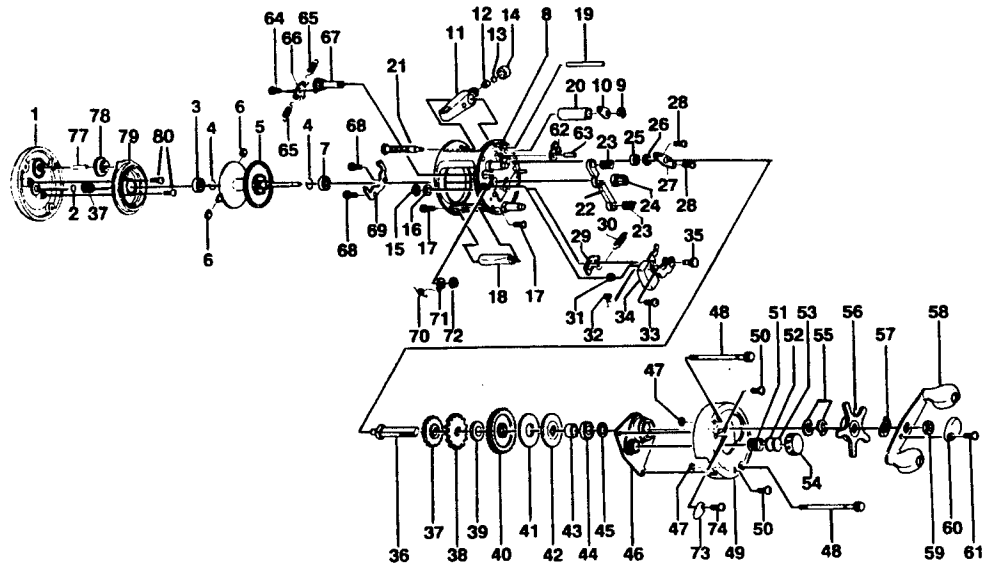
# BROWNING SYNTEC ST200SW

## SPECIFICATIONS:

200 yds./20 lb. Line Capacity  
 5.2:1 Gear Ratio  
 11.3 oz. Weight  
 Righthand, Superwide  
 2 Ball Bearings

## FEATURES:

One-piece die-cast frame  
 Metal star drag  
 Soft-touch paddle handle  
 Color - Beige



Key No.	Part No.	Description	Price	Key No.	Part No.	Description	Price
1	FV023-04	Left Side Cover Assy	11.85	40	JX012-01	Drive Gear	7.67
2	XX038-02	Spool Shaft Washer	.26	41	JX059-01	Drag Disc	1.44
3	XX106-01	Bushing - Spool Shaft	1.15	42	JX045-01	Drag "D" Washer	.88
4	JX080-01	Clip Ring	.26	43	JX052-01	Spacer - Crank Shaft	.67
5	FV321-01	Spool Assy	14.75	44	TW058-01	Bearing - Crank Shaft (U)	7.21
6	XX044-01	Brake Shoe B	.26	45	JX038-01	Crank Shaft Washer	.31
7	JX106-01	Bearing - Spool Shaft	6.33	46	JX066-02	Crank Shaft Guide	3.35
8	FV301-04	Frame Assy	31.25	47	JX073-01	O-Ring - Thumb Screw	.31
9	QW120-01	E-Clip - Worm Shaft	.26	48	JX074-05	Thumb Screw	.45
10	JX067-01	Bushing - Worm Shaft	.31	49	XX024-09	Right Side Cover	5.80
11	JX347-02	Line Guide Carrier Assy	2.32	50	QW123-01	Right Side Cover Screw	.15
12	JX006-01	Line Guide Pawl	1.80	51	JX105-01	Spring - Tension Knob	.31
13	JX035-01	Washer - Line Guide Pawl	.26	52	QW032-02	Washer - Spool Tension	.26
14	JX007-02	Screw - Line Guide Carrier	.52	53	JX082-01	Washer - Cushion	.21
15	NX092-01	E-Clip - Kick Lever Guide Post	.30	54	XX033-01	Spool Tension Knob	2.82
16	XX035-01	Washer - Kick Lever Guide	.26	55	JX046-01	Spring "D" Washer	.67
17	JX050-01	Screw - Thumb Rest	.31	56	XX355-02	Star Drag	3.45
18	FV009-01	Thumb Rest	.65	57	NX054-01	Handle Washer	.26
19	FV061-01	Line Guide Carrier Guide	1.00	58	VW318-05	Handle Assy	9.22
20	FV016-01	Worm Shaft Guide	.75	59	QW003-01	Handle Nut	.36
21	FV372-01	Worm Shaft Assy	7.45	60	JX034-02	Handle Nut Cap	.36
22	JX025-01	Pinion Yoke	.52	61	QW123-01	Handle Nut Cap Screw	.21
23	JX040-01	Yoke Spring	.21	62	JX363-01	Anti-Reverse Pawl Assy	2.52
24	JX011-01	Pinion Gear	5.36	63	JX098-01	Post - Anti-Reverse Pawl	.41
25	JX017-01	Bearing - Crank Shaft (L)	.77	64	XX125-01	Screw - Clicker Pawl	.98
26	QW120-01	E-Clip - Crank Shaft	.26	65	JX110-01	Clicker Spring	.21
27	JX002-01	Retainer - Crank Shaft	.57	66	JX114-01	Clicker Pawl	.70
28	JX107-01	Screw - Crank Shaft Retainer	.15	67	JX084-01	Clicker Cam	2.88
29	JX077-01	Kick Lever	.57	68	JX125-01	Screw - Clicker Spring Holder	.21
30	JX097-01	Spring - Kick Lever	.15	69	JX103-01	Clicker Spring Holder	1.20
31	JX068-01	Bushing - Release Slider Guide	1.08	70	JX022-01	Spring - Clicker Cam	.26
32	JX104-01	Spring - Release Slider	.21	71	JX041-01	Click Cam Actuator	.36
33	XX050-01	Screw - Release Slider	.15	72	JX075-01	C-Clip	.21
34	JX339-02	Release Slider Assy	1.80	73	JX109-02	Click Lever	.52
35	JX102-01	Post - Kick Lever Guide	.88	74	QW053-05	Screw - Click Lever	.26
36	JX008-01	Crank Shaft	2.88	77	FV098-01	Idle Gear Post	.50
37	FV112-01	O/S Drive Gear	.50	78	FV127-01	O/S Idle Gear	1.00
38	JX083-01	Trip Ratchet	.93	79	FV351-01	Spool Cover Assy	6.65
39	QW111-01	Washer - Ratchet	.26	80	AV125-01	Spool Cover Screw	.70

<b>MODEL INTRODUCED</b>	1996	<b>EFFECTIVE DATE OF PARTS LIST/DIAGRAM</b>	Oct. 1996	<b>DISCONTINUED</b>	N/A
-------------------------	------	---	-----------	---------------------	-----

Prices subject to change without notice. Prices do not include postage and handling.

PLEASE ORDER BY PART NUMBER Zebco Division Brunswick Corporation, Box 270, Tulsa, OK 74101 USA 918-831-6965

