

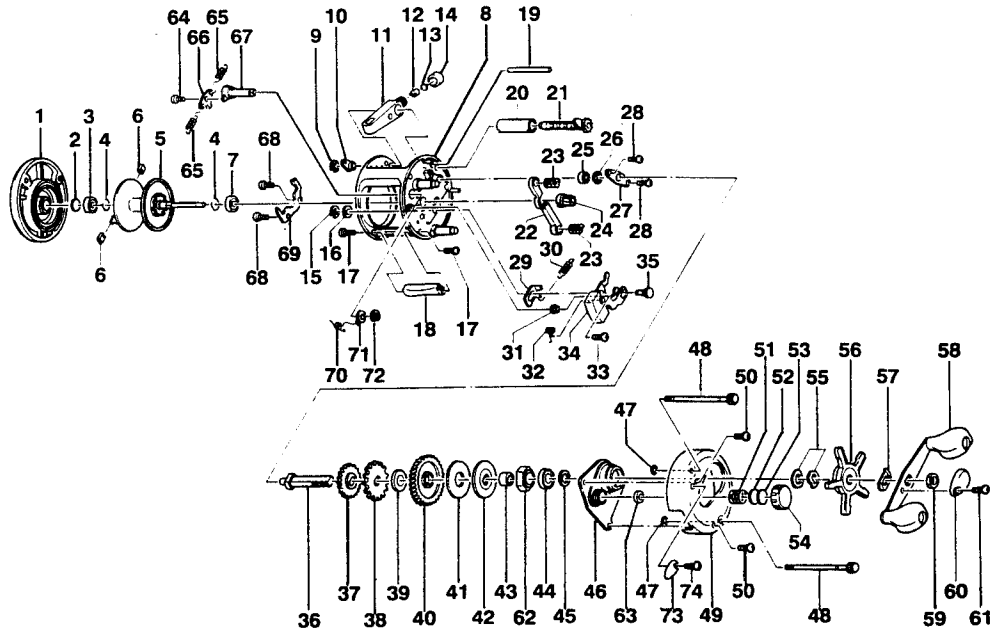
BROWNING SYNTEC ST200W

SPECIFICATIONS:

2 Ball Bearings
 5.2:1 Gear Ratio
 10.5 oz. Weight
 200 yds./17 lb. Line Capacity

FEATURES:

1 piece die cast aluminum frame
 Thumb Button Spool Release
 Extra-wide, high-strength Gear System
 Macnined Aluminum Spool
 Aluminum Side Covers
 Double Sealed stainless steel ball bearings
 Centrifugal Brake System
 Baitclicker
 Color - Beige



Key No.	Part No.	Description	Price	Key No.	Part No.	Description	Price
1	XX323-06	Left Side Cover Assy	19.21	38	JX083-01	Trip Ratchet	.93
2	XX038-02	Spool Shaft Washer	.26	39	JX111-01	Washer - Ratchet	.46
3	XX106-01	Bushing - Spool Shaft	.26	40	JX012-01	Drive Gear	7.67
4	JX080-01	Clip Ring	.26	41	JX059-01	Drag Disc	1.44
5	XX321-02	Spool Assy	13.75	42	JX045-01	Drag "D" Washer	.88
6	XX044-01	Brake Shoe B	.26	43	JX052-01	Spacer - Crank Shaft	.67
7	JX106-01	Bearing - Spool Shaft	6.33	44	TW058-01	Bearing - Crank Shaft (U)	7.21
8	XX301-05	Frame Assy	36.20	45	JX038-01	Crank Shaft Washer	.31
9	QW120-01	E-Clip - Worm Shaft	.26	46	JX066-02	Crank Shaft Guide	3.35
10	JX067-01	Bushing - Worm Shaft	.31	47	JX073-01	O-Ring - Thumb Screw	.31
11	JX347-02	Line Guide Carrier Assy	2.32	48	JX074-04	Thumb Screw	1.24
12	JX006-01	Line Guide Pawl	1.80	49	XX024-06	Right Side Cover	9.75
13	JX035-01	Washer - Line Guide Pawl	.26	50	QW123-01	Right Side Cover Screw	.15
14	JX007-02	Screw - Line Guide Carrier	.52	51	JX105-01	Spring - Tension Knob	.31
15	NX092-01	E-Clip - Kick Lever Guide Post	.30	52	QW032-02	Washer - Spool Tension	.26
16	XX035-01	Washer - Kick Lever Guide	.26	53	JX082-01	Washer - Cushion	.21
17	JX050-01	Screw - Thumb Rest	.31	54	XX033-01	Spool Tension Knob	2.82
18	XX009-02	Thumb Rest	.62	55	JX046-01	Spring "D" Washer	.67
19	XX061-01	Line Guide Carrier Guide	.98	56	XX355-02	Star Drag	3.45
20	XX016-01	Worm Shaft Guide	.72	57	NX054-01	Handle Washer	.26
21	XX372-01	Worm Shaft Assy	7.42	58	JX318-03	Handle Assy	11.99
22	JX025-01	Pinion Yoke	.52	59	QW003-01	Handle Nut	.36
23	JX040-01	Yoke Spring	.21	60	JX034-02	Handle Nut Cap	.36
24	JX011-01	Pinion Gear	5.36	61	QW123-01	Handle Nut Cap Screw	.15
25	JX017-01	Bearing - Crank Shaft (L)	.77	62	JX363-01B	Anti-Reverse Pawl Assy	2.52
26	QW120-01	E-Clip - Crank Shaft	.26	63	JX098-01	Post - Anti-Reverse Pawl	.41
27	JX002-01	Retainer - Crank Shaft	.57	64	XX125-01	Screw - Clicker Pawl	.98
28	JX107-01	Screw - Crank Shaft Retainer	.15	65	JX110-01	Clicker Spring	.21
29	JX077-01	Kick Lever	.60	66	JX114-01	Clicker Pawl	.70
30	JX097-01	Spring - Kick Lever	.15	67	JX084-01	Clicker Cam	2.88
31	JX068-01	Bushing - Release Slider Guide	1.08	68	JX125-01	Screw - Clicker Spring Holder	.21
32	JX104-01	Spring - Release Slider	.21	69	JX103-01	Clicker Spring Holder	1.20
33	XX050-01	Screw - Release Slider	.15	70	JX022-01	Spring - Clicker Cam	.26
34	JX339-02	Release Slider Assy	1.80	71	JX041-01	Click Cam Actuator	.36
35	JX102-01	Post - Kick Lever Guide	.88	72	JX075-01	C-Clip	.21
36	JX008-01	Crank Shaft	2.88	73	JX109-02	Click Lever	.52
37	JX112-01	O/S Drive Gear	.46	74	QW053-05	Screw - Click Lever	.26

MODEL INTRODUCED	1996	EFFECTIVE DATE OF PARTS LIST/DIAGRAM	Oct. 1996	DISCONTINUED	N/A
-------------------------	------	---	-----------	---------------------	-----

Prices subject to change without notice. Prices do not include postage and handling.

PLEASE ORDER BY PART NUMBER. Zebco Division, Brunswick Corporation, Box 370, Tulsa, OK 74101 USA 918-831-6965

