

SPECIFICATIONS :

Med FW
 270 yds / 20 lb Line Capacity
 4.7:1 Gear Ratio
 18.7 oz.

25.2" (IPT) Retrieve Rate

Bearings:

STR400 - Bushings
 STR430 - 2 BB; 1 RB

FEATURES :

Synchronized Level Wind

Anti-Reverse:

STR400 - 9 Stop
 STR430 - Continuous

One Piece Aluminum Frame

Thumb Button Spool Release

Right Hand Retrieve

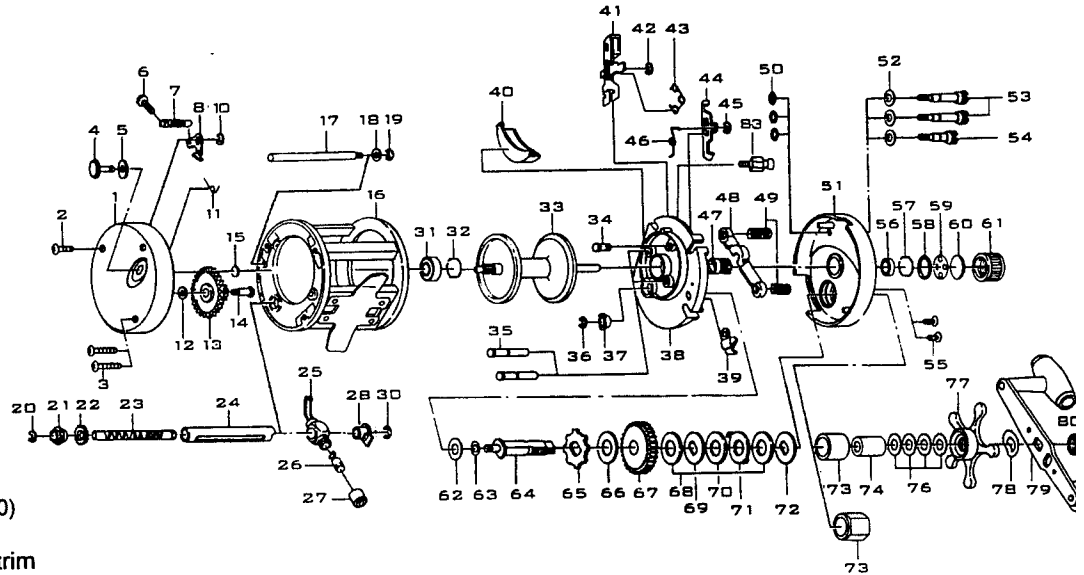
Plastic "T" Handle Knob (STR400)

Wooden "T" Handle Knob (STR430)

Color :

STR400 - Black w/ Silver trim

STR430 - Black w/ Gold trim



Key No.	Part No. STR400	Part No. STR430	Description	Price	Key No.	Part No. STR400	Part No. STR430	Description	Pri
1	W V023-02	W V023-01	Palm Side Cover		44	W V077-01		Kick Lever	
2	W V053-04	W V053-03	Palm Side Cover Screw		45	QW120-01		Yoke Post E-Clip	
3	W V053-02	W V053-01	Palm Side Cover Screw		46	W V097-01		Kick Lever Spring	
4	W V109-02	W V109-01	Bait Click Lever		47	W V311-01		Pinion Gear Assembly	
5	W V126-01		Bait Click Lever Washer		48	W V025-01		Pinion Yoke	
6	TV053-01		Bait Click Spring Screw		49	W V040-01		Pinion Yoke Spring	
7	W V110-01		Bait Click Spring		50	TV073-01		Thumb Screw O-Ring	
8	W V114-01		Bait Click Pawl		51	W V324-02	W V324-01	Gear Side Cover Assembly	
10	NX092-01		Bait Click Pawl E-Clip		52	TV035-01		Thumb Screw Washer	
11	W V022-01		Bait Click Lever Spring		53	W V074-02	W V074-01	Thumb Screw	
12	W V121-01		Level Wind Idle Gear Washer		54	W V074-04	W V074-03	Thumb Screw	
13	W V127-01		Level Wind Idle Gear		55	W V123-02	W V123-01	Gear Side Cover Screw	
14	W V050-01		Level Wind Idle Gear Screw		56	N/A	W V017-01	Spool Tension Knob Bearing	
15	QW032-04		Spool Shaft Washer		56	W V 117-01	N/A	Spool Tension Knob Bushing	
16	W V301-02	W V301-01	Frame Assembly		57	W V080-01		Bearing Clip Ring	
17	W V061-02	W V061-01	Line Guide Carrier Guide		58	QW101-01		Spool Tension Knob O-Ring	
18	QW035-02		Line Guide Carrier Guide Washer		59	QV032-02		Spool Tension Washer	
19	NX092-01		Line Guide Carrier Guide E-Clip		60	QW082-01		Spool Cushion Washer	
20	NX092-01		Level Wind Gear E-Clip		61	W V033-02	W V033-01	Spool Tension Knob	
21	TV068-01		Worm Shaft Bushing - Palm		62	W V038-01		Crank Shaft Spacing Washer	
22	W V085-01		Level Wind Gear		63	MV035-01		Crank Shaft Washer - Lower	
23	W V072-01		Worm Shaft		64	W V008-01		Crank Shaft	
24	W V061-02	W V061-01	Worm Shaft Guide		65	W V083-01		Trip Ratchet	
25	W V347-02	W V347-01	Line Guide Carrier assembly		66	W V111-01		Ratchet Washer	
26	ZW006-01		Line Guide Pawl		67	W V012-01		Drive Gear	
27	W V007-02	W V007-01	Line Guide Carrier Screw		68	W V059-01		Drag Disc "A"	
28	TV067-01		Worm Shaft Bushing - Gear Side		69	W V045-01		Drag "D" Washer - Lower	
30	NX092-01		Worm Shaft Bushing E-Clip		70	UV059-01		Drag Disc "B"	
31	N/A	W V017-01	Spool Shaft Bearing - Palm		71	W V048-01		Drag Key Washer	
31	W V117-01	N/A	Spool Shaft Bushing - Palm		72	UV045-01		Drag "D" Washer - Upper	
32	W V080-01		Bearing Clip Ring		73	N/A	TV063-01	One Way Bearing	
33	W V321-02	W V321-01	Spool Assembly		73	W V058-01	N/A	Crank Shaft Bushing - Upper	
34	W V102-01		Release Slider Guide Pin		74	N/A	TV052-01	One Way Clutch Sleeve	
35	W V064-01		Yoke Post		74	UV052-01	N/A	Spacer	
36	QW120-01		Crank Shaft E-Clip		76	W V046-01		Drag Spring Washer	
37	MV035-01		Crank Shaft Bushing - Lower		77	W V355-02	W V355-01	Star Drag Assembly	
38	W V010-01		Set Plate		78	QW054-01		Handle Washer	
39	W V363-01	N/A	Anti Reverse Pawl Assembly		79	MV318-01	W V318-01	Handle Assembly	
40	W V143-01		Gear Cover		80	QW003-01		Handle Nut	
41	W V339-02	W V339-01	Thumb Bar Assembly		81	JX034-04	JX034-03	Handle Nut Cap	
42	QW120-01		Release Slider E-Clip		82	QW123-01	QW123-05	Handle Nut Cap Screw	
43	W V104-01		Release Slider Spring		83	W V103-01		Release Slider Spring Pin	

MODEL	EFFECTIVE DATE OF
INTRODUCED : 1998	PARTS LIST/DIAGRAM: Oct. '98
DISCONTINUED : N/A	

Prices subject to change without notice. Prices do not include postage and handling.

PLEASE ORDER BY PART NUMBER

Zebco, P.O. Box 270, Tulsa, Ok. 74101; 918-831-6965 Phone or 800-FIXREEL (349-7335) FAX

