

QUANTUM

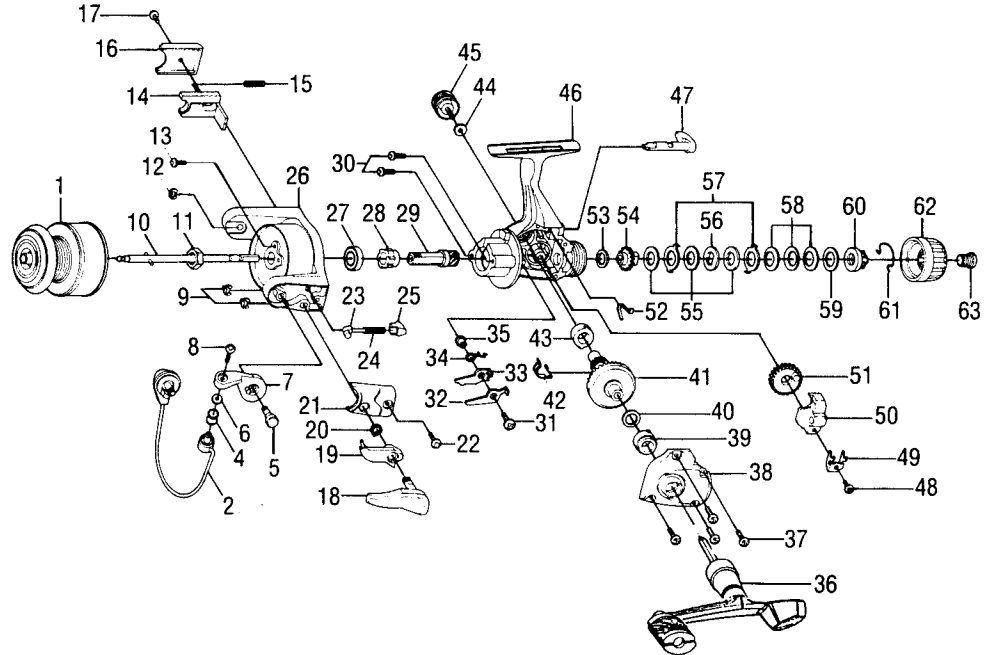
SX2 SX2A (made in Bangladesh)

SPECIFICATIONS:

- Light Freshwater
- 140 yds./6 lb. Line Capacity
- Rear Drag
- 4.4:1 Ratio
- 9.9 oz. Weight
- 4 Ball Bearings

FEATURES:

- Light Weight Graphite Construction
- Three-Way Silent (On/Off/Self-Centering) Anti-Reverse
- Right/Left Interchangeable Balanced Handle
- Internal Bail Trip
- Twist Reducing Ball Bearing Line Roller
- Pop-Off Spool
- Snapshot Trigger
- Color: **SX2** - Dark Green
- SX2A** - Light Silver



| Key No. | Part No. | Description | Price | Key No. | Part No. | Description | Price |
|---------|----------|-------------------------------|-------|---------|----------|-----------------------------------|-------|
| 1 | JU321-01 | Spool Assembly (SX2) | 5.85 | 33 | GU074-01 | Anti-Reverse Pawl "B" On | .46 |
| 1 | JH321-20 | Spool Assembly (SX2A) | 5.85 | 34 | GU061-01 | Anti-Reverse Pawl Spring | .36 |
| 2 | GU347-21 | Bail Assembly (SX2) | 5.62 | 35 | GU091-01 | Anti-Reverse Pawl Post | .26 |
| 2 | GU347-51 | Bail Assembly (SX2A) | 5.62 | 36 | NU318-01 | Handle Assembly (Balanced) (SX2) | 2.15 |
| 4 | BH004-14 | Line Roller Bearing | 4.02 | 36 | JH318-10 | Handle Assembly (Balanced) (SX2A) | 2.15 |
| 5 | GU051-03 | Arm Lever Pin | 1.03 | 37 | GU057-01 | Body Cover Screw | .15 |
| 6 | GU105-07 | Line Roller Washer | .15 | 38 | HU023-04 | Body Cover (SX2) | 2.06 |
| 7 | HU007-01 | Arm Lever (SX2) | 1.70 | 38 | JH023-06 | Body Cover (SX2A) | 2.06 |
| 7 | KU007-01 | Arm Lever (SX2A) | 1.70 | 39 | GU157-01 | Gear Shaft Bearing | 6.75 |
| 8 | KQ108-01 | Line Slider Screw | .31 | 40 | GU105-08 | Adjustment Washer | .15 |
| 9 | KQ034-01 | E-Clip | .15 | 41 | GU012-01 | Drive Gear | 2.88 |
| 10 | JU315-02 | Main Shaft Assembly | 1.03 | 42 | GU086-01 | Silent Cam | .41 |
| 11 | GU006-01 | Rotor Nut | .31 | 43 | GU157-01 | Gear Shaft Bearing | 6.75 |
| 12 | KQ034-01 | E-Clip | .15 | 44 | GU105-01 | Handle Screw Washer | .10 |
| 13 | GU077-08 | Rotor Nut Lock Screw | .15 | 45 | GU073-01 | Handle Screw (SX2) | .62 |
| 14 | HU019-01 | Kick Lever | .52 | 45 | GU073-05 | Handle Screw (SX2A) | .62 |
| 15 | KQ049-04 | Kick Lever Spring | .31 | 46 | HU001-04 | Body (SX2) | 3.71 |
| 16 | HU046-01 | Kick Lever Cover (SX2) | .26 | 46 | JH001-06 | Body (SX2A) | 3.71 |
| 16 | HU046-05 | Kick Lever Cover (SX2A) | .26 | 47 | GU090-01 | Anti-Reverse Lever (SX2) | 1.49 |
| 17 | GU077-02 | Kick Lever Cover Screw | .15 | 47 | KH090-03 | Anti-Reverse Lever (SX2A) | 1.49 |
| 18 | GU115-02 | Trigger Assembly (SX2) | 3.61 | 48 | JU100-01 | Oscillator Retainer Screw (SX2) | .25 |
| 18 | GU115-08 | Trigger Assembly (SX2A) | 3.61 | 48 | JU100-06 | Oscillator Retainer Screw (SX2A) | .25 |
| 19 | GU097-02 | Trigger Link Assembly (SX2) | 1.70 | 49 | HU078-01 | Oscillator Slide Retainer | .26 |
| 19 | GU097-06 | Trigger Link Assembly (SX2A) | 1.70 | 50 | HU025-01 | Oscillator Slider | 1.03 |
| 20 | NL096-01 | Trigger Spring | .82 | 51 | HU053-01 | Oscillator Gear | 1.03 |
| 21 | HU087-01 | Arm Lever Spring Cover (SX2) | .67 | 52 | GU089-01 | Anti-Reverse Lever Spring | .52 |
| 21 | HU087-04 | Arm Lever Spring Cover (SX2A) | .67 | 53 | GU105-34 | Drag Friction Washer "A" | .79 |
| 22 | GU077-02 | Arm Lever Cover Screw | .15 | 54 | HU075-01 | Drag Click Gear | .62 |
| 23 | NL031-01 | Arm Lever Spring Pin (SX2) | .26 | 55 | GU105-35 | Drag Washer "B" | .91 |
| 23 | KQ031-01 | Arm Lever Spring Pin (SX2A) | .26 | 56 | HU080-01 | Drag Washer "D" | .52 |
| 24 | KQ049-05 | Arm Lever Spring | .31 | 57 | HU081-01 | Drag Washer Keyed | .52 |
| 25 | QL020-01 | Arm Lever Spring Holder | .31 | 58 | HU043-01 | Drag Spring | .67 |
| 26 | HU009-04 | Rotor (SX2) | 3.24 | 59 | GU105-24 | Drag Washer | .91 |
| 26 | HU009-19 | Rotor (SX2A) | 3.24 | 60 | HU066-01 | Drag Nut | .62 |
| 27 | AQ028-01 | Ball Bearing | 6.75 | 61 | HU070-01 | Drag Retainer Clip | 1.13 |
| 28 | HU060-01 | Anti-Reverse Ratchet | 2.06 | 62 | HU032-01 | Drag Knob (SX2) | .77 |
| 29 | GU111-02 | Pinion | 2.01 | 62 | MU332-01 | Drag Knob (SX2A) | .77 |
| 30 | GU077-01 | Bearing Screw | .15 | 63 | HU101-01 | Drag Knob Screw (SX2) | .62 |
| 31 | GU077-05 | Anti-Reverse Pawl Screw | .15 | 63 | JH101-03 | Drag Knob Screw (SX2A) | .62 |
| 32 | GU063-01 | Anti-Reverse Pawl "A" Cntr | .46 | | | | |

| | | | | | |
|-------------------------|-----------------------------------------|---------------------------------------------|------------|---------------------|--------------------------------------------|
| MODEL INTRODUCED | SX2 - 1994 SX2A - 1997 | EFFECTIVE DATE OF PARTS LIST/DIAGRAM | April 1997 | DISCONTINUED | SX2 - June '97 SX2A - N/A |
|-------------------------|-----------------------------------------|---------------------------------------------|------------|---------------------|--------------------------------------------|

Prices subject to change without notice. Prices do not include postage and handling.

PLEASE ORDER BY PART NUMBER Zebco Division Brunswick Corporation, Box 270, Tulsa, OK 74101 USA 918-831-6965

