

QUANTUM

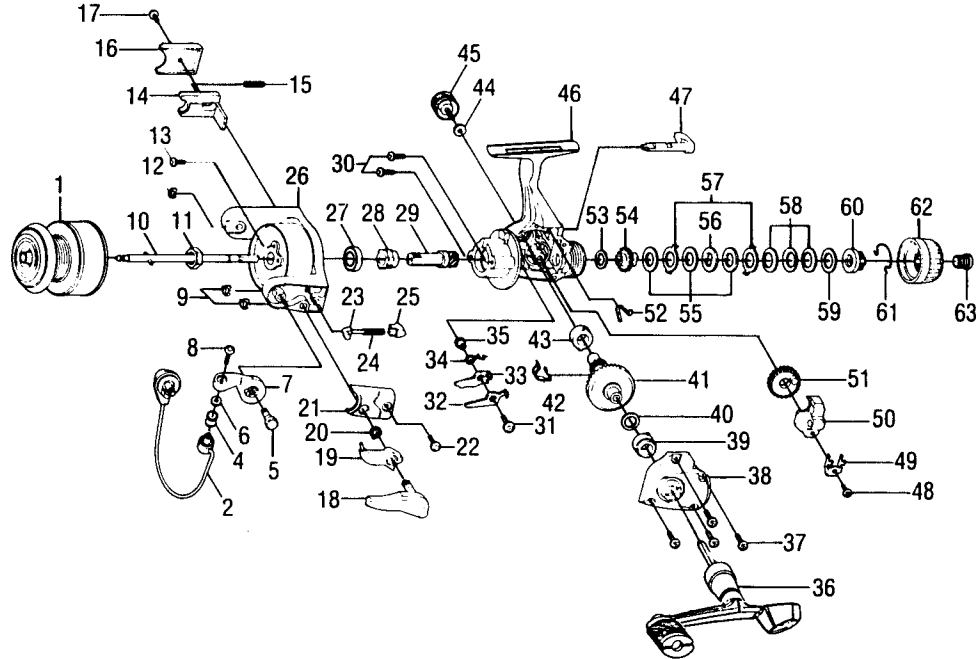
SX3 SX3A (made in Bangladesh)

SPECIFICATIONS:

- Med. Lt. Freshwater
- 160 yds./8 lb. Line Capacity
- Rear Drag
- 4.0:1 Ratio
- 12.4 oz. Weight
- 4 Ball Bearings

FEATURES:

- Light Weight Graphite Construction
- Three-Way Silent (On/Off/Self-Centering) Anti-Reverse
- Right/Left Interchangeable Balanced Handle
- Internal Bail Trip
- Twist Reducing Ball Bearing Line Roller
- Pop-Off Spool
- Snapshot Trigger
- Color: **SX3** - Dark Green
SX3A - Light Silver



| Key No. | Part No. | Description | Price | Key No. | Part No. | Description | Price |
|---------|----------|-------------------------------|-------|---------|----------|-----------------------------------|-------|
| 1 | JU321-15 | Spool Assembly (SX3) | 8.55 | 33 | JU074-01 | Anti-Reverse Pawl "B" On | .98 |
| 1 | JH321-24 | Spool Assembly (SX3A) | 8.55 | 34 | JU061-01 | Anti-Reverse Pawl Spring | 1.03 |
| 2 | GU347-12 | Bail Assembly (SX3) | 5.62 | 35 | GU091-02 | Anti-Reverse Pawl Post | .72 |
| 2 | JU347-51 | Bail Assembly (SX3A) | 5.62 | 36 | NU318-03 | Handle Assembly (Balanced) (SX3) | 5.56 |
| 4 | BH004-14 | Line Roller Bearing | 4.02 | 36 | JH318-11 | Handle Assembly (Balanced) (SX3A) | 5.56 |
| 5 | GU051-03 | Arm Lever Pin | 1.03 | 37 | JU057-01 | Body Cover Screw (SX3) | .62 |
| 6 | GU105-07 | Line Roller Washer | .15 | 37 | JU057-04 | Body Cover Screw (SX3A) | .62 |
| 7 | HU007-01 | Arm Lever (SX3) | 1.70 | 38 | JU023-04 | Body Cover (SX3) | 2.60 |
| 7 | KU007-01 | Arm Lever (SX3A) | 1.70 | 38 | KH023-06 | Body Cover (SX3A) | 2.60 |
| 8 | KQ108-01 | Line Slider Screw | .31 | 39 | AQ028-02 | Gear Shaft Bearing | 6.10 |
| 9 | KQ034-01 | E-Clip | .15 | 40 | GU105-13 | Adjustment Washer | .64 |
| 10 | JU315-01 | Main Shaft Assembly | 1.80 | 41 | JU012-01 | Drive Gear (SX3) | 3.45 |
| 11 | GU006-02 | Rotor Nut | .82 | 41 | JU012-02 | Drive Gear (SX3A) | 3.45 |
| 12 | KQ034-01 | E-Clip | .15 | 42 | JU086-01 | Silent Cam | 1.13 |
| 13 | GU077-08 | Rotor Nut Lock Screw | .15 | 43 | AQ028-02 | Gear Shaft Bearing | 6.10 |
| 14 | JU019-01 | Kick Lever | 1.03 | 44 | GU105-01 | Handle Screw Washer | .10 |
| 15 | KQ049-06 | Kick Lever Spring | .25 | 45 | GU073-01 | Handle Screw | .62 |
| 16 | JU046-01 | Kick Lever Cover (SX3) | .77 | 46 | JU001-04 | Body (SX3) | 10.05 |
| 16 | JU046-04 | Kick Lever Cover (SX3A) | .77 | 46 | KH001-06 | Body (SX3A) | 10.05 |
| 17 | GU077-02 | Kick Lever Cover Screw | .15 | 47 | GU090-01 | Anti-Reverse Lever (SX3) | 1.49 |
| 18 | GU115-02 | Trigger Assembly (SX3) | 3.61 | 47 | KH090-03 | Anti-Reverse Lever (SX3A) | 1.49 |
| 18 | GU115-08 | Trigger Assembly (SX3A) | 3.61 | 48 | JU100-01 | Oscillator Retainer Screw | .25 |
| 19 | GU097-02 | Trigger Link Assembly (SX3) | 1.70 | 49 | JU078-01 | Oscillator Slide Retainer | .31 |
| 19 | GU097-06 | Trigger Link Assembly (SX3A) | 1.70 | 50 | JU025-01 | Oscillator Slider | 1.80 |
| 20 | NL096-01 | Trigger Spring | .82 | 51 | JU053-01 | Oscillator Gear | 1.80 |
| 21 | JU087-01 | Arm Lever Spring Cover (SX3) | .80 | 52 | GU089-01 | Anti-Reverse Lever Spring | .52 |
| 21 | JU087-04 | Arm Lever Spring Cover (SX3A) | .80 | 53 | GU105-32 | Drag Friction Washer "A" | .77 |
| 22 | GU077-02 | Arm Lever Cover Screw | .15 | 54 | JU075-01 | Drag Click Gear | 1.29 |
| 23 | QL031-01 | Arm Lever Spring Pin (SX3) | .26 | 55 | GU105-33 | Drag Disc | .88 |
| 23 | NL031-01 | Arm Lever Spring Pin (SX3A) | .26 | 56 | JU080-01 | Drag Washer "D" | 1.03 |
| 24 | KQ049-02 | Arm Lever Spring | .88 | 57 | JU081-01 | Drag Washer Keyed | 1.03 |
| 25 | QL020-01 | Arm Lever Spring Holder | .31 | 58 | JU043-01 | Drag Spring | 1.34 |
| 26 | JU009-04 | Rotor (SX3) | 3.70 | 59 | JU105-19 | Drag Washer | .96 |
| 26 | JU009-19 | Rotor (SX3A) | 3.70 | 60 | JU066-01 | Drag Nut | 1.29 |
| 27 | AQ028-06 | Ball Bearing | 6.28 | 61 | JU083-01 | Drag Click Spring | 1.91 |
| 28 | JU060-01 | Anti-Reverse Ratchet | 2.42 | 62 | JU032-01 | Drag Knob (SX3) | 1.55 |
| 29 | JU011-01 | Pinion Gear | 2.37 | 62 | KU332-01 | Drag Knob (SX3A) | 1.55 |
| 30 | JU077-01 | Bearing Screw | .62 | 63 | JU101-01 | Drag Knob Screw (SX3) | 1.29 |
| 31 | GU077-05 | Anti-Reverse Pawl Screw | .15 | 63 | KH101-03 | Drag Knob Screw (SX3A) | 1.29 |
| 32 | GU063-01 | Anti-Reverse Pawl "A" Cntr | .46 | | | | |

| | | | | | |
|-------------------------|---|---|------------|---------------------|--|
| MODEL INTRODUCED | SX3 - 1994 SX3A - 1997 | EFFECTIVE DATE OF PARTS LIST/DIAGRAM | April 1997 | DISCONTINUED | SX3 - June '97 SX3A - N/A |
|-------------------------|---|---|------------|---------------------|--|

Prices subject to change without notice. Prices do not include postage and handling.

PLEASE ORDER BY PART NUMBER Zebco Division Brunswick Corporation, Box 270, Tulsa, OK 74101 USA 918-831-6965

