

# QUANTUM

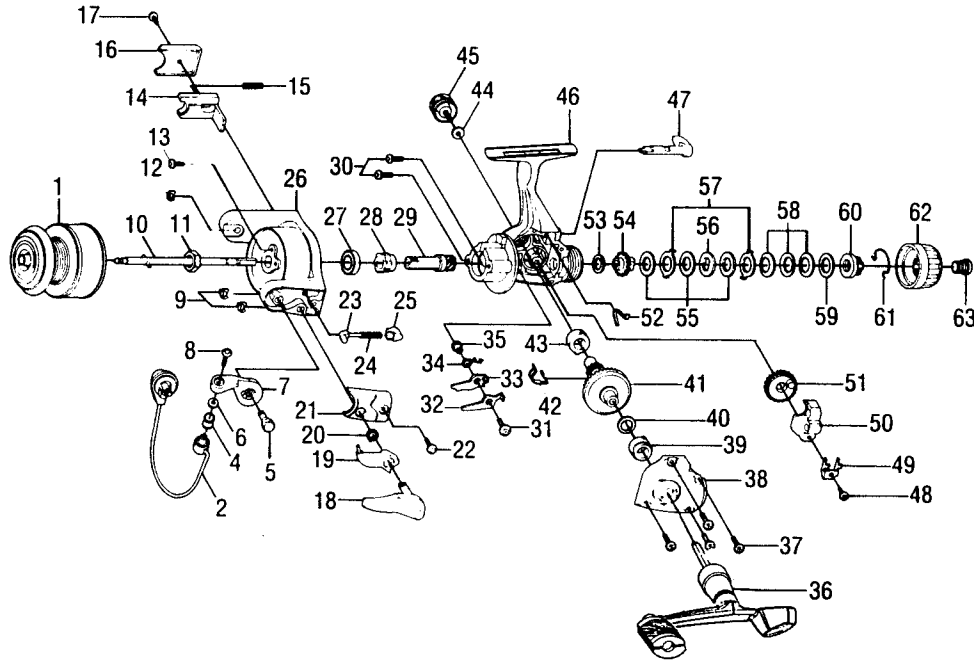
# SX4 SX4A (made in Bangladesh)

### SPECIFICATIONS:

- Medium Freshwater
- 240 yds./8 lb. Line Capacity
- Rear Drag
- 4.0:1 Ratio
- 13.8 oz. Weight
- 4 Ball Bearings

### FEATURES:

- Light Weight Graphite Construction
- Three-Way Silent (On/Off/Self-Centering) Anti-Reverse
- Right/Left Interchangeable Balanced Handle
- Internal Bail Trip
- Twist Reducing Ball Bearing Line Roller
- Pop-Off Spool
- Snapshot Trigger
- Color: **SX4** - Dark Green  
**SX4A** - Light Silver



Key No.	Part No.	Description	Price	Key No.	Part No.	Description	Price
1	JU321-20	Spool Assembly (SX4)	6.05	34	JU061-01	Anti-Reverse Pawl Spring	1.03
1	JH321-25	Spool Assembly (SX4A)	6.05	35	GU091-02	Anti-Reverse Pawl Post	.72
2	GU347-23	Bail Assembly (SX4)	5.50	36	NU318-05	Handle Assembly (Balanced) (SX4)	5.67
2	KU347-51	Bail Assembly (SX4A)	5.50	36	JH318-11	Handle Assembly (Balanced) (SX4A)	5.67
4	BH004-14	Line Roller Bearing	4.02	37	JU057-01	Body Cover Screw	.62
5	GU051-05	Arm Lever Pin	1.03	37	JU057-04	Body Cover Screw	.62
6	GU105-07	Line Roller Washer	.15	38	KU023-04	Body Cover (SX4)	3.75
7	HU007-01	Arm Lever	1.70	38	LH023-05	Body Cover (SX4A)	3.75
8	KQ108-01	Line Slider Screw	.31	39	AQ028-02	Gear Shaft Bearing	6.10
9	KQ034-01	E-Clip	.15	40	GU105-13	Adjustment Washr	.64
10	JU315-03	Main Shaft Assembly	2.01	41	JU012-01	Drive Gear (SX4)	3.45
11	GU006-02	Rotor Nut	.82	41	JU012-02	Drive Gear (SX4A)	3.45
12	KQ034-01	E-Clip	.15	42	JU086-01	Silent Cam	1.13
13	GU077-08	Rotor Nut Lock Screw	.15	43	AQ028-02	Gear Shaft Bearing	6.10
14	KU019-01	Kick Lever	1.13	44	GU105-01	Handle Screw Washer	.10
15	KQ049-06	Kick Lever Spring	.25	45	GU073-01	Handle Screw (SX4)	.62
16	KU046-01	Kick Lever Cover (SX4)	.82	45	GU073-05	Handle Scrw (SX4A)	.62
16	KU046-04	Kick Lever Cover (SX4A)	.82	46	KU001-04	Body (SX4)	4.05
17	GU077-02	Kick Lever Cover Screw	.15	46	LH001-05	Body (SX4A)	4.05
18	GU115-02	Trigger Assembly (SX4)	3.61	47	GU090-01	Anti-Reverse Lever (SX4)	1.49
18	GU115-08	Trigger Assmby (SX4A)	3.61	47	KH090-03	Anti-Reverse Lever (SX4A)	1.49
19	GU097-02	Trigger Link Assembly (SX4)	1.70	48	JU100-01	Oscillator Retainer Screw	.25
19	GU097-06	Trigger Link Assembly (SX4A)	1.70	49	JU078-01	Oscillator Slide Retainer	.31
20	NL096-01	Trigger Spring	.82	50	KU025-01	Oscillator Slider	2.01
21	KU087-01	Arm Lever Spring Cover (SX4)	.82	51	KU053-01	Oscillator Gear	2.01
21	KU087-04	Arm Lever Spring Cover (SX4A)	.82	52	GU089-01	Anti-Reverse Lever Spring	.52
22	GU077-02	Arm Lever Cover Screw	.15	53	GU105-32	Drag Friction Washer "A"	.77
23	NL031-01	Arm Lever Spring Pin	.26	54	KU075-01	Drag Click Gear	1.44
24	KQ049-02	Arm Lever Spring	.88	55	GU105-33	Drag Disc	.88
25	QL020-01	Arm Lever Spring Holder	.31	56	JU080-01	Drag Washer "D"	1.03
26	KU009-04	Rotor (SX4)	4.05	57	JU081-01	Drag Washer Keyed	1.03
26	KJ009-16	Rotor (SX4A)	4.05	58	JU043-01	Drag Spring	1.34
27	AQ028-06	Ball Bearing	6.28	59	GU105-19	Drag Washer	.96
28	JU060-01	Anti-Reverse Ratchet	2.42	60	JU066-01	Drag Nut	1.29
29	JU011-01	Pinion Gear	2.37	61	JU083-01	Drag Click Spring	1.91
30	JU077-01	Bearing Screw	.62	62	JU032-01	Drag Knob (SX4)	1.55
31	GU077-05	Anti-Reverse Pawl Screw	.15	62	KU332-01	Drag Knob (SX4A)	1.55
32	JU063-01	Anti-Reverse Pawl "A" Cntr	.98	63	JU101-01	Drag Knob Screw (SX4)	1.29
33	JU074-01	Anti-Reverse Pawl "B" On	.98	63	KH101-03	Drag Knob Screw (SX4A)	1.29

<b>MODEL INTRODUCED</b>	<b>SX4 - 1994</b> <b>SX4A - 1997</b>	<b>EFFECTIVE DATE OF PARTS LIST/DIAGRAM</b>	April 1997	<b>DISCONTINUED</b>	<b>SX4 - June '97</b> <b>SX4A - N/A</b>
-------------------------	---	---	------------	---------------------	--

Prices subject to change without notice. Prices do not include postage and handling.

**PLEASE ORDER BY PART NUMBER** Zebco Division Brunswick Corporation, Box 270, Tulsa, OK 74101 USA 918-831-6965

