



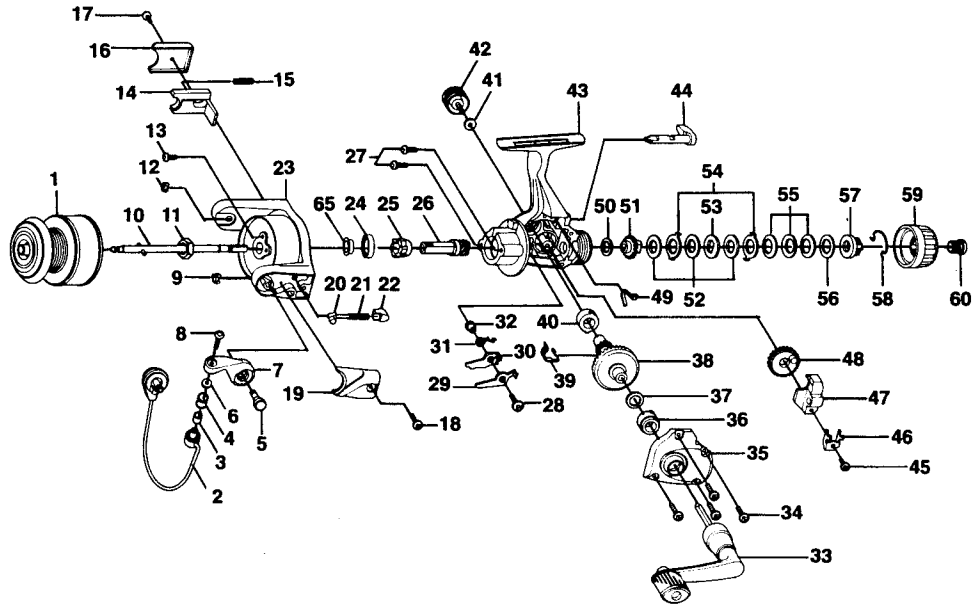
TR2

SPECIFICATIONS:

Light Freshwater
 140 yds./6 lb. Line Capacity
 Rear Drag
 4.4:1 Ratio
 7.9 oz. Weight

FEATURES:

Three-Way Silent
 (On/Off/Self-centering)
 Right/Left Interchangeable
 Handle
 Internal Bail Trip
 Rotating Line Roller
 Rugged Brass Pinion Gear



Key No.	Part No.	Description	Price	Key No.	Part No.	Description	Price
1	JU321-36	Spool Assembly	4.50	32	GU091-01	Anti-Reverse Pawl Post	.26
2	GU347-32	Bail Assembly	3.75	33	GU318-44	Handle Assembly	2.25
3	MT016-02	Line Roller Bushing	.77	34	GU057-02	Body Cover Screw	.79
4	MT004-01	Line Roller	1.24	35	HU023-13	Body Cover	2.75
5	GU051-04	Arm Lever Pin	.57	36	GU027-01	Gear Shaft Bushing	.82
6	GU105-07	Line Roller Washer	.15	37	GU105-08	Adjustment Washer	.15
7	NU007-01	Arm Lever	.93	38	GU012-01	Drive Gear	2.88
8	KQ108-03	Line Slider Screw	.88	39	GU086-01	Silent Cam	.41
9	KQ034-01	E-Clip	.15	40	GU027-01	Gear Shaft Bushing	.82
10	JU315-02	Main Shaft Assembly	1.03	41	GU105-01	Handle Cap Washer	.10
11	GU006-01	Rotor Nut	.31	42	GU073-01	Handle Cap Screw	.62
12	KQ034-01	E-Clip	.15	43	HU001-13	Body	2.60
13	GU077-04	Rotor Nut Lock Screw	.15	44	GU090-01	Anti-Reverse Lever	1.49
14	HU019-01	Kick Lever	.52	45	JU100-01	Oscillator Retainer Screw	.26
15	KQ049-04	Kick Lever Spring	.31	46	HU078-01	Oscillator Slide Retainer	.26
16	HU046-01	Kick Lever Cover	.26	47	HU025-01	Oscillator Slider	1.03
17	GU077-03	Kick Lever Cover Screw	.15	48	HU053-01	Oscillator Gear	1.03
18	GU077-03	Arm Lever Cover Screw	.15	49	GU089-01	Anti-Reverse Lever Spring	.52
19	MU087-01	Arm Lever Spring Cover	.26	50	GU105-34	Drag Washer	.79
20	NL031-01	Arm Lever Spring Pin	.26	51	HU075-01	Drag Click Gear	.62
21	KQ049-05	Bail Spring	.31	52	GU105-35	Drag Washer "B"	.91
22	QL020-01	Arm Lever Spring Holder	.31	53	HU080-01	Drag Washer "D"	.52
23	HU009-07	Rotor	3.45	54	HU081-01	Drag Washer "A"	.52
24	GU028-01	Pinion Bushing	.70	55	HU043-01	Drag Spring	.67
25	HU060-01	Anti-Reverse Ratchet	2.06	56	GU105-24	Drag Washer	.91
26	GU011-02	Pinion Gear	2.01	57	HU066-01	Drag Nut	.62
27	GU077-01	Bearing Screw	.15	58	HU070-01	Drag Retainer Clip	1.13
28	GU077-05	Anti-Reverse Pawl Screw	.15	59	HU032-01	Drag Knob	.77
29	GU063-01	Anti-Reverse Pawl "A" (Cntr)	.46	60	HU101-01	Drag Knob Screw	.62
30	GU074-01	Anti-Reverse Pawl "B" (On)	.46	65	GU110-01	Pinion Collar	.45
31	GU061-01	Anti-Reverse Pawl Spring	.36				

MODEL INTRODUCED	1997	EFFECTIVE DATE OF PARTS LIST/DIAGRAM	Oct. 1996	DISCONTINUED	N/A
------------------	------	--------------------------------------	-----------	--------------	-----

Prices subject to change without notice. Prices do not include postage and handling.

PLEASE ORDER BY PART NUMBER Zebco Division Brunswick Corporation, Box 270, Tulsa, OK 74101 USA 918-831-6965

