

QUANTUM

XR00 XR00A (made in Bangladesh)

WARNING!!!

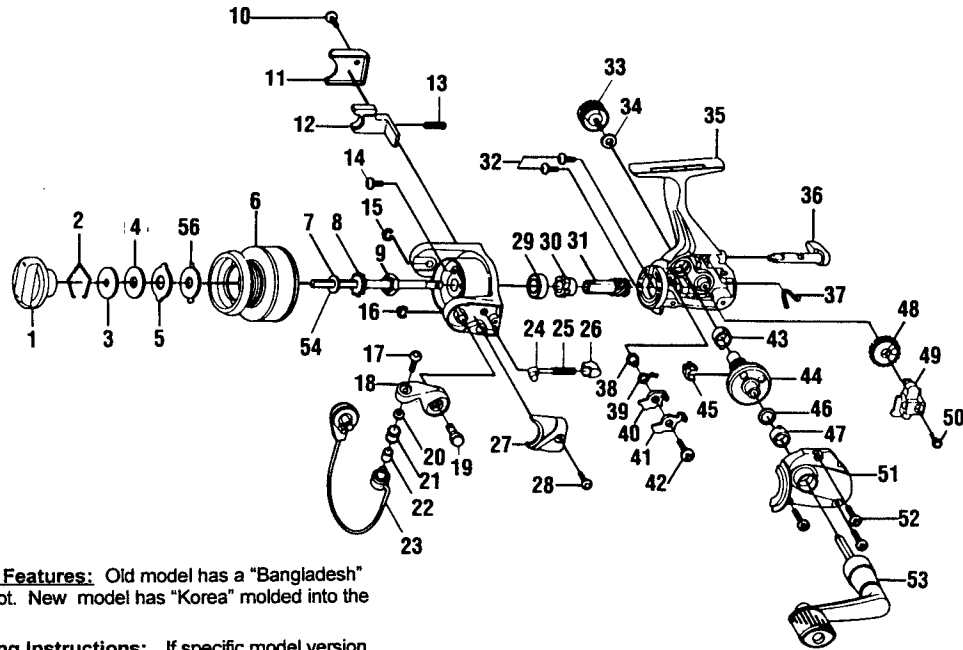
These parts are not interchangeable with new model

SPECIFICATIONS:

- Super Ultra FW
- 8 yds./4 lb. Line Capacity
- Front Drag
- 4.4:1 Ratio
- 6.7 oz. Weight
- 1 Ball Bearing

FEATURES:

- Aluminum Long Stroke Spool
- Three-Way/selective anti-reverse (off/on/self-centering)
- Lightweight Graphite Body
- Coil-type Bail Spring
- Right/left hand Retrieve
- Color: **XR00** - Maroon
XR00A - Dark Brown



Distinguishing Features: Old model has a "Bangladesh" sticker on reel foot. New model has "Korea" molded into the reel foot.

Special Handling Instructions: If specific model version cannot be identified for parts order, send one of each part (for old and new model) and charge for one part.

Key No.	Part No.	Description	Price	Key No.	Part No.	Description	Price
1	ZU332-01	Drag Knob Assembly	1.50	31	ZU011-01	Pinion Gear	3.30
2	KQ038-01	Drag Retainer	.35	32	GU077-01	Bearing Screw	.15
3	ZU080-01	Spool Washer "D"	.93	33	GU073-01	Handle Screw Cap	.62
4	KQ029-01	Spool Washer "B"	.70	34	GU105-01	Handle Cap Washer	.10
5	KQ045-01	Spool Washer "A"	.93	35	GU001-33	Body (XR00A)	391
6	ZU321-12	Spool Assembly (XR00A)	4.95	35	GU001-19	Body (XR00)	3.91
6	ZU321-08	Spool Assembly (XR00)	4.95	36	GU090-01	Anti-Reverse Stopper Lever	1.48
7	GU105-06	Spool Adjustment Washer	.36	37	GU089-01	Anti-Reverse Lever Spring	.52
8	GU037-01	Click Gear	.52	38	GU091-01	Anti-Reverse Pawl Post	.26
9	GU006-01	Rotor Nut	.31	39	GU061-01	Anti-Reverse Pawl Spring	.36
10	GU077-07	Kick Lever Cover Screw	.62	40	GU063-01	Anti-Reverse Pawl "A"	.46
11	ZU046-01	Kick Lever Cover	.72	41	GU074-01	Anti-Reverse Pawl "B"	.46
12	ZU019-01	Kick Lever	1.18	42	GU077-05	Anti-Reverse Pawl Screw	.15
13	KQ049-01	Kick Lever Spring	.26	43	GU027-01	Gear Shaft Bushing	.82
14	GU077-04	Rotor Nut Lock Screw	.15	44	GU012-01	Drive Gear	2.88
15	KQ034-01	E-Clip	.15	45	GU086-01	Silent Cam	.41
16	KQ034-01	E-Clip	.15	46	GU105-08	Drive Gear Adj. Washer	.15
17	KQ108-01	Line Slider Screw (XR00A)	.31	47	GU027-01	Body Cover Bushing	.82
17	KQ108-03	Line Slider Screw (XR00)	.31	48	ZU053-01	Oscillator Gear	.93
18	LU007-01	Arm Lever	.77	49	GU025-01	Oscillator Slider	.88
19	GU051-02	Arm Lever Pin	.46	50	GU100-01	Main Shaft Screw	.15
20	GU105-07	Line Roller Washer	.15	51	GU023-33	Body Cover (XR00A)	2.11
21	MT004-01	Line Roller	1.24	51	GU023-19	Body Cover (XR00)	2.11
22	MT016-02	Line Roller Bushing	.77	52	GU057-01	Body Cover Screw	.15
23	ZU347-14	Bail Assembly	5.46	53	GU318-48	Handle Assembly (XR00A)	4.33
24	KQ031-01	Arm Lever Spring Pin	.26	53	GU318-17	Handle Assembly (XR00)	4.33
25	KQ049-03	Arm Lever Spring	.36	54	GU015-01	Main Shaft (XR00A)	1.85
26	QL020-01	Arm Lever Spring Holder	.31	54	ZU015-01	Main Shaft (XR00)	1.85
27	ZU087-01	Arm Lever Spring Cover	.72	55	ZU009-09	Rotor (XR00A)	2.94
28	GU077-07	Arm Lever Cover Screw	.62	55	ZU009-05	Rotor (XR00)	2.94
29	AQ028-01	Ball Bearing	6.75	56	KQ046-01	Spring Washer	.66
30	GU060-01	Ratchet Gear	2.06				

MODEL INTRODUCED	XR00 - 1995 XR00A - 1997	EFFECTIVE DATE OF PARTS LIST/DIAGRAM	April 1997	DISCONTINUED	XR00 - June '97 XR00A - N/A
-------------------------	---	---	------------	---------------------	--

Prices subject to change without notice. Prices do not include postage and handling.

PLEASE ORDER BY PART NUMBER Zebco Division Brunswick Corporation, Box 270, Tulsa, OK 74101 USA 918-831-6965

