

QUANTUM

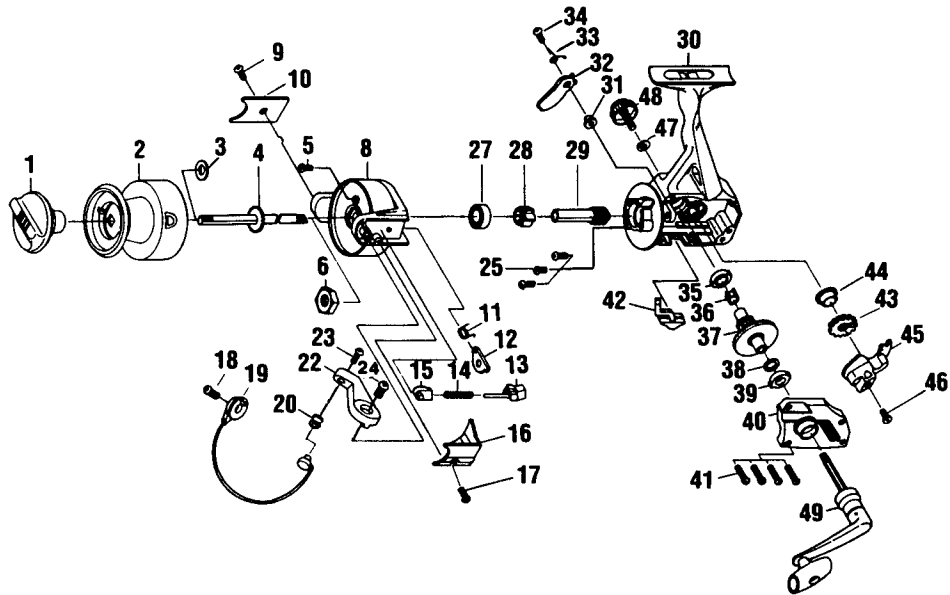
XR6 XR6A (made in Bangladesh)

SPECIFICATIONS:

Med. Hvy Freshwater/
Medium Saltwater
225 yds./14 lb. Line Capacity
Front Drag
4.7:1 Ratio
17.6 oz. Weight
1 Ball Bearing

FEATURES:

Aluminum Long Stroke
Spool
Lightweight Graphite Body
Coil-type Bail Spring
Right/left hand Retrieve
Color: **XR6** - Maroon
XR6A - Dark Brown



Key No.	Part No.	Description	Price	Key No.	Part No.	Description	Price
1	UL332	Drag Knob Assembly	3.47	28	UL060	Ratchet	3.24
2	UL321-11	Spool Assembly (XR6A)	6.50	29	UL011	Pinion Gear	6.82
2	UL321-5	Spool Assembly (XR6)	6.50	30	UL001-11	Body (XR6A)	4.58
3	UL046	Spool Adjustment Washer (XR6A)	.35	30	UL001-5	Body (XR6)	4.58
3	UL030-01	Spool Adjustment Washer (XR6)	.35	31	UL091	Stopper Bushing	.74
4	UL315	Main Shaft Assembly	3.52	32	UL063	Stopper	1.26
5	UL094	Rotor Nut Lock Screw	.68	33	UL061	Stopper Spring	1.13
6	UL006	Rotor Nut	1.13	34	UL083	Stopper Screw (XR6A)	.25
8	UL009-08	Rotor (XR6A)	3.97	34	UL077-01	Stopper Screw (XR6)	.25
8	UL009-5	Rotor (XR6)	3.97	35	UL013	Body Bushing	1.13
9	UL085	Kick Lever Cover Screw	.74	36	UL086	Silent Cam	.68
10	UL024	Kick Lever Cover	.74	37	UL012	Drive Gear	3.64
11	UL049	Kick Lever Spring	.74	38	UL026	Drive Gear Adjustment Washer	1.26
12	UL019	Kick Lever	1.42	39	UL013	Body Cover Bushing	1.13
13	UL031	Spring Shaft	.74	40	UL023-11	Body Cover (XR6A)	2.94
14	UL022	Bail Spring	1.13	40	UL023-5	Body Cover (XR6)	2.94
15	UL020	Spring Holder	.68	41	UL057	Body Cover Screw	.74
16	UL087	Bail Spring Cover	.68	42	UL059	Stopper Lever	1.13
17	UL085	Bail Spring Cover Screw	.74	43	UL053	Oscillator Gear	2.39
18	UL051	Bail Holder Screw	.74	44	UL078	Oscillator Gear Bushing (XR6A)	.50
19	UL347	Bail Assembly	6.82	44	UL158-01	Oscillator Gear Bushing (XR6)	.50
20	UL004	Line Roller	2.21	45	UL081	Oscillator Slider (XR6A)	2.35
21	UL017	Bail Collar	1.65	45	UL025-01	Oscillator Slider (XR6)	2.35
22	UL007	Arm Lever	1.13	46	UL161	Oscillator Screw (XR6A)	.25
23	UL108	Bail Screw	.74	46	UL100-01	Oscillator Screw (XR6)	.25
24	UL107	Arm Lever Screw (XR6A)	.74	47	UL076	Handle Cap Washer (XR6A)	.55
24	UL051	Arm Lever Screw (XR6)	.74	47	UL105-01	Handle Cap Washer (XR6)	.55
25	UL080	Bearing Plate Screw (XR6A)	.66	48	UL073	Handle Screw Cap	1.65
25	UL041-01	Bearing Plate Screw (XR6)	.66	49	VL318-04	Handle Assembly (XR6A)	6.39
27	UL028	Ball Bearing	8.86	49	UL318-2	Handle Assembly (XR6)	6.39

MODEL INTRODUCED	XR6 - 1995 XR6A - 1997	EFFECTIVE DATE OF PARTS LIST/DIAGRAM	April 1997	DISCONTINUED	XR6 - June '97 XR6A - N/A
-------------------------	---	---	-------------------	---------------------	--

Prices subject to change without notice. Prices do not include postage and handling.

PLEASE ORDER BY PART NUMBER Zebco Division Brunswick Corporation, Box 270, Tulsa, OK 74101 USA 918-831-6965

