

QUANTUM XT6 and XT7

SPECIFICATIONS:

Front Drag

4.7:1 Ratio

1 Ball Bearing

XT6

Medium Heavy Freshwater

225 yds./14 lb. Line Capacity

16.0 oz. Weight

XT7

Heavy Freshwater

320 yds./17 lb. Line Capacity

17.1 oz. Weight

FEATURES:

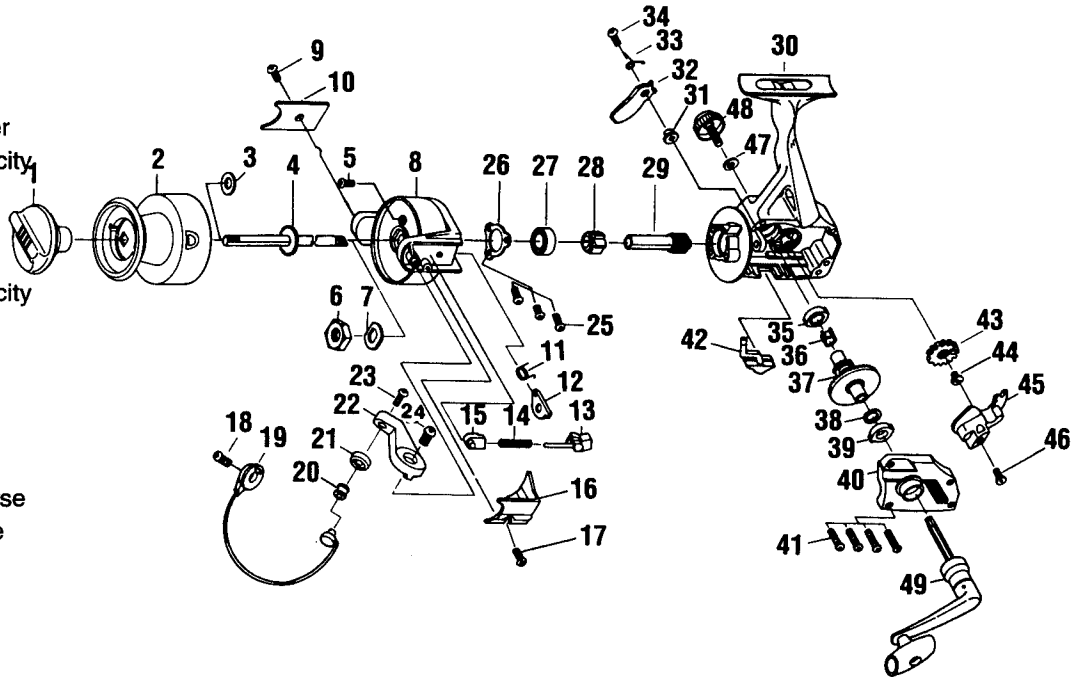
Light Weight Graphite Construction

Three-Way Silent (On/Off/Self) Anti-Reverse

Right/Left Interchangeable Handle

Internal Bail Trip

Snapshot Trigger



Key No.	XT6 Part No.	XT7 Part No.	Description	Price	Key No.	XT6 Part No.	XT7 Part No.	Description	Price
1	UL332-01	VL332-01	Drag Knob Assembly	3.37	29	UL011-01	UL011-01	Pinion Gear	6.62
2	UL321-09	N/A	Spool Assembly	6.50	30	UL001-09	N/A	Body	4.45
2	N/A	VL321-07	Spool Assembly	6.95	30	N/A	VL001-07	Body	4.50
3	UL030-01	UL030-01	Spool Adjustment Washer	.35	31	UL091-01	UL091-01	A/R Pawl Post	.72
4	UL315-01	UL315-01	Main Shaft Assembly	3.42	32	UL063-01	UL063-01	A/R Pawl	1.22
5	UL094-01	UL094-01	Rotor Nut Lock Screw	.66	33	UL061-01	UL061-01	A/R Pawl Spring	1.10
6	UL006-01	UL006-01	Rotor Nut	1.10	34	UL077-01	UL077-01	A/R Pawl Screw	.25
8	UL009-04	VL009-03	Rotor	3.85	35	UL013-01	UL013-01	Gear Shaft Bushing	1.10
9	UL085-01	UL085-01	Kick Lever Cover Screw	.74	36	UL086-01	UL086-01	Silent Cam	.66
10	UL024-01	UL024-01	Kick Lever Cover	.74	37	UL012-01	UL012-01	Drive Gear	3.53
11	UL049-01	UL049-01	Kick Lever Spring	.72	38	UL026-01	UL026-01	Drive Gear Adj. Washer	.66
12	UL019-01	UL019-01	Kick Lever	1.38	39	UL013-01	UL013-01	Gear Shaft Bushing	1.10
13	UL031-01	UL031-01	Spring Shaft	.72	40	UL023-09	VL023-07	Body Cover	2.85
14	UL022-01	UL022-01	Bail Spring	1.10	41	UL057-01	UL057-01	Body Cover Screw	.74
15	UL020-01	UL020-01	Spring Holder	.66	42	UL059-01	UL059-01	A/R Lever	1.10
16	UL087-01	VL087-01	Bail Spring Cover	.68	43	UL053-01	UL053-01	Oscillator Gear	2.32
17	UL085-01	UL085-01	Bail Spring Cover Screw	.74	44	UL158-01	UL158-01	Oscillator Gear Bushing	.50
18	UL051-01	UL051-01	Bail Holder Screw	.72	45	UL025-01	UL025-01	Oscillator Slider	2.35
19	UL347-01	VL347-01	Bail Assembly	6.82	46	UL100-01	UL100-01	Main Shaft Screw	.25
20	UL004-01	UL004-01	Line Roller	2.15	47	UL105-01	UL105-01	Handle Screw Washer	.55
21	UL007-01	UL007-01	Arm Lever	1.13	48	UL073-01	UL073-01	Handle Cap Screw	1.65
23	UL108-01	UL108-01	Line Slider Screw	.74	49	UL318-01	N/A	Handle Assembly	5.97
24	UL051-01	UL051-01	Arm Lever Screw	.72	49	N/A	VL318-01	Handle Assembly	6.20
25	UL041-01	UL041-01	Bearing Plate Screw	.66					
27	UL028-01	UL028-01	Ball Bearing	8.60					
28	UL060-01	UL060-01	Ratchet Gear	3.15					

MODEL INTRODUCED	1997	EFFECTIVE DATE OF PARTS LIST/DIAGRAM	Oct. 1996	DISCONTINUED	N/A
------------------	------	--------------------------------------	-----------	--------------	-----

Prices subject to change without notice. Prices do not include postage and handling.