

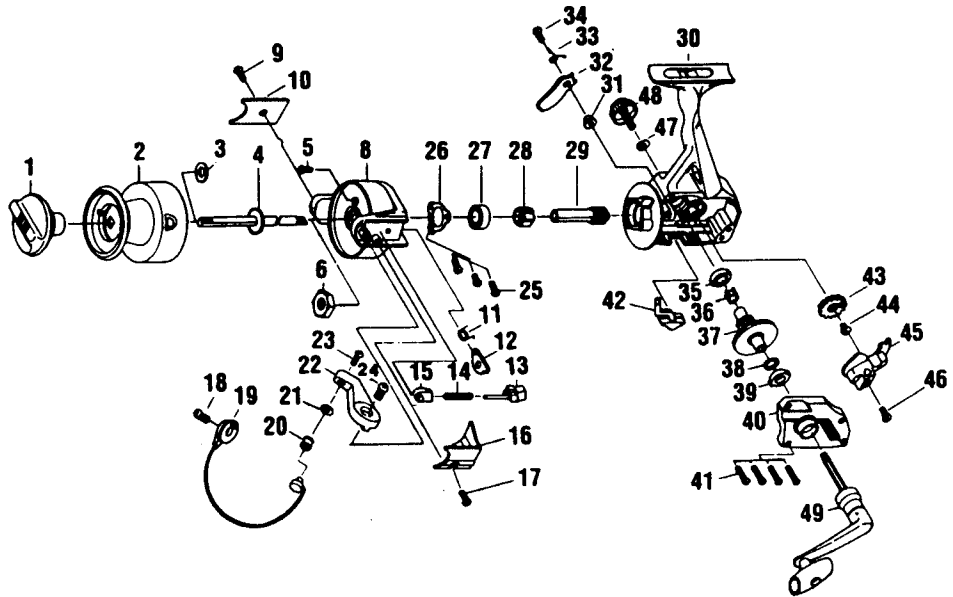
# QUANTUM XT7A

## SPECIFICATIONS:

Heavy Freshwater  
 200 yds./20 lb. Line Capacity  
 Front Drag  
 4.7:1 Ratio  
 17.0 oz. Weight  
 1 Ball Bearing

## FEATURES:

Light Weight Graphite Construction  
 Three-Way Silent (On/Off/Self-Centering) Anti-Reverse  
 Right/Left Balanced Handle  
 Internal Bail Trip  
 Twist Reducing Ball Bearing Line Roller  
 Pop-Off Spool  
 Snapshot Trigger  
 Color: Black



Key No.	Part No.	Description	Price	Key No.	Part No.	Description	Price
1	UL332-01	Drag Knob Assembly	3.47	31	UL091-01	A/R Pawl Post	.74
2	VL321-12	Spool Assembly	9.00	32	UL063-01	A/R Pawl	1.26
3	UL030-01	Spool Adjustment Washer	.36	33	UL061-01	A/R Pawl Spring	1.13
4	UL315-01	Main Shaft Assembly	3.52	34	UL077-01	A/R Pawl Screw	.26
5	GU077-08	Rotor Nut Lock Screw	.15	35	UL013-01	Body Bushing	1.13
6	UL006-01	Rotor Nut	1.13	36	UL086-01	Silent Cam	.68
8	VL009-01	Rotor	4.09	37	VL012-01	Drive Gear	3.75
9	GU077-02	Kick Lever Cover Screw	1.11	38	UL026-01	Drive Gear Adjustment Washer	.68
10	UL024-01	Kick Lever Cover	.76	39	UL013-01	Body Cover Bushing	1.13
11	UL049-01	Kick Lever Spring	.74	40	VL023-56	Body Cover	3.03
12	UL019-01	Kick Lever	1.42	41	JU057-04	Body Cover Screw	.64
13	UL031-01	Bail Spring Shaft	.74	42	UL059-01	A/R Lever	1.13
14	UL022-01	Bail Spring	1.13	43	UL053-01	Oscillator Gear	2.39
15	UL020-01	Bail Spring Holder	.68	44	UL158-01	Oscillator Gear Bushing	.52
16	VL087-01	Bail Spring Cover	.70	45	UL025-01	Oscillator Slider	2.42
17	GU077-02	Bail Spring Cover Screw	.15	46	UL100-01	Main Shaft Screw	.26
18	UL051-01	Bail Holder Screw	.74	47	UL105-01	Handle Cap Washer	.57
19	VL347-52	Bail Assembly	7.02	48	XU073-02	Handle Screw Cap	1.70
20	VL004-01	Line Roller	2.21	49	UL318-52	Handle Assembly	6.58
22	VL007-02	Arm Lever	1.16				
23	UL108-01	Bail Screw	.76				
24	UL051-01	Arm Lever Screw	.74				
25	JU077-01	Bearing Plate Screw	.64				
27	AQ028-05	Ball Bearing	7.00				
28	UL060-01	Ratchet Gear	3.25				
29	UL011-01	Pinion Gear	6.82				
30	VL001-56	Body	4.72				

<b>MODEL INTRODUCED</b>	August 1, 1998	<b>EFFECTIVE DATE OF PARTS LIST/DIAGRAM</b>	August 1, 1998	<b>DISCONTINUED</b>	N/A
-------------------------	----------------	---	----------------	---------------------	-----

Prices subject to change without notice. Prices do not include postage and handling.

**PLEASE ORDER BY PART NUMBER** Zebco Division Brunswick Corporation, Box 270, Tulsa, OK 74101 USA 918-831-6965

