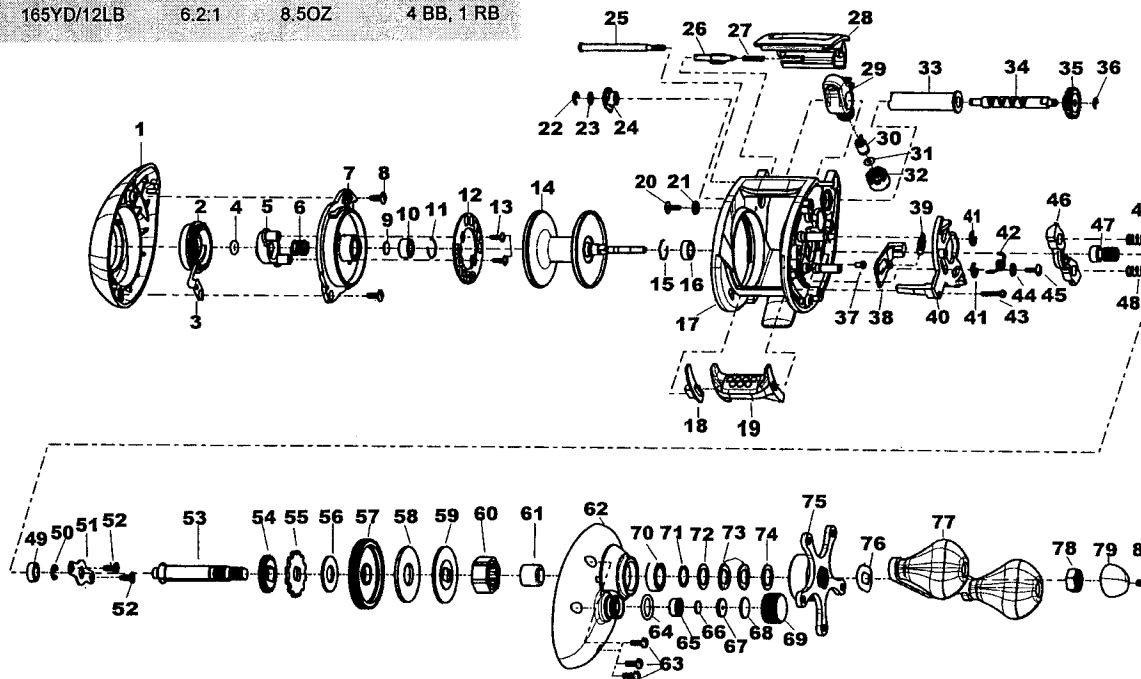
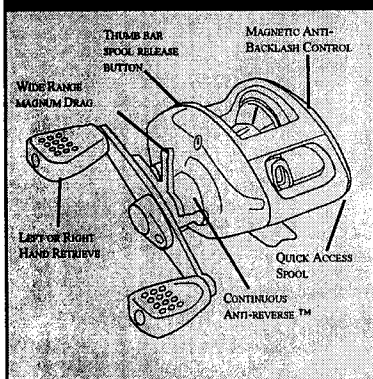


MODEL	L/R Hand	LINE CAPACITY	RATIO	WEIGHT	BEARINGS
A350	Right hand	165YD/12LB	5.1:1	8.5OZ	2 BB, 1 RB
A560	Right hand	165YD/12LB	6.2:1	8.5OZ	4 BB, 1 RB



### BROWNING AGGRESSOR FEATURES



Key #	Description	Part No.		Key #	Description	Part No.	
		A560	A350			A560	A350
1	Palm Side Cover	ZV023-01	ZV023-02	41	E-Clip	QW120-01	↔
2	Magnet Dial	ZV026-01	↔	42	Release Slider Spring	ZV104-01	↔
3	Click Spring	ZW108-01	↔	43	Thumb Bar Screw	ZW053-01	↔
4	Dial Friction Ring	NX105-01	↔	44	Release Slider Guide Washer	SW121-01	↔
5	Slide Cam	BV028-01	↔	45	Release Slider Screw	BV076-01	↔
6	Slide Cam Spring	NX071-01	↔	46	Pinion Yoke	ZW025-01	↔
7	Spool Cover	ZW051-01	↔	47	Pinion Gear Assembly	VW311-01	ZW311
8	Spool Cover Screw	ZW125-01	↔	48	Pinion Yoke Spring	QW040-01	↔
9	Spool Tension Shim	QW032-04	↔	49	Crank Shaft Bearing (L)	SW017-01	N/A
10	Spool Shaft Bearing (Palm)	UW017-01	N/A	49	Crank Shaft Bushing (L)	N/A	ZW017
10	Spool Shaft Bushing (Palm)	N/A	BV017-01	50	E-Clip - Crank Shaft	QW120-01	↔
11	Clip Ring	QW080-01	↔	51	Crank Shaft Retainer	BV002-01	↔
12	Magnet Plate Assy	QW330-01	↔	52	Crank Shaft Retainer Screw	QW107-01	↔
13	Magnet Plate Screw	QW076-01	↔	53	Crank Shaft	ZW008-01	↔
14	Spool Assy	ZW321-03	↔	54	O/S Drive Gear	ZW112-01	↔
15	Clip Ring	QW080-01	↔	55	Trip Ratchet	QW083-01	↔
16	Spool Shaft Bearing (Gear)	SW017-01	↔	56	Trip Ratchet Washer	QW111-01	↔
17	Frame	BV001-03	↔	57	Drive Gear	VW012-01	ZW012
18	Thumb Bar Retainer (Palm)	ZW056-01	↔	58	Drag Disc	QW059-01	↔
19	Thumb Bar Assembly	ZV309-01	↔	59	Drag "D" Washer	QW045-01	↔
20	Side Cover Stopper Collar Screw	BV076-01	↔	60	One Way Bearing	ZW063-01	↔
21	Side Cover Stopper Collar	BV088-01	↔	61	One Way Bearing Sleeve	ZW052-01	↔
22	E-Clip	NX092-01	↔	62	Gear Side Cover Assembly	ZV324-01	ZV324
23	Worm Shaft Washer	QW035-03	↔	63	Side Cover Screw	BV123-01	↔
24	Worm Shaft Bushing	QW067-01	↔	64	Tension Knob O-Ring	QW101-01	↔
25	Stabilizer Bar	ZW061-01	↔	65	Tension Knob Bushing	QW117-01	↔
26	Side Cover Locking Lever	ZW119-01	↔	66	Spool Tension Washer	QW032-04	↔
27	Side Cover Locking Lever Spring	ZW096-01	↔	67	Spool Tension Collar	QW081-01	↔
28	Front Support	ZV027-01	ZV027-02	68	Spool Cushion Washer	QW082-01	↔
29	Line Guide Camer	ZV047-01	↔	69	Spool Tension Knob	ZW033-03	↔
30	Line Guide Pawl	ZW006-01	↔	70	Crank Shaft Bearing	TW058-01	↔
31	Line Guide Pawl Washer	BV035-01	↔	71	Crank Shaft Washer	TW035-01	↔
32	Line Guide Carrier Screw	ZW007-01	↔	72	Crank Shaft Washer	TW035-02	↔
33	Worm Shaft Guide	ZW016-01	↔	73	Spring "D" Washer	QW046-02	↔
34	Worm Shaft	ZW072-01	↔	74	Crank Shaft Washer	TW035-02	↔
35	O/S Pinion Gear	ZW085-01	↔	75	Star Drag Assembly	ZV355-01	↔
36	E-Clip	NX090-01	↔	76	Handle Washer	QW054-01	↔
37	Release Slider Spring Holder	MV041-01	↔	77	Handle Assembly	ZV318-01	↔
38	Kick Lever	ZW077-01	↔	78	Handle Nut	QW003-01	↔
39	Kick Lever Spring	ZW097-01	↔	79	Handle Nut Cap	JX034-01	↔
40	Release Slider	ZW039-01	↔	80	Handle Nut Cap Screw	QW123-01	↔

For more information please call for parts availability and current pricing.  
 Brunswick Division Brunswick Corp. PO Box 270, Tulsa, OK 74101

**PLEASE ORDER BY PART NUMBER**  
 Phone: 918-831-6965 FAX: 1-800-982-8093