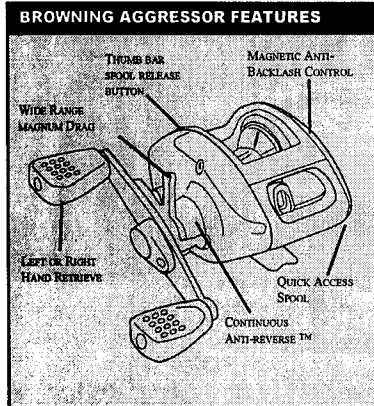
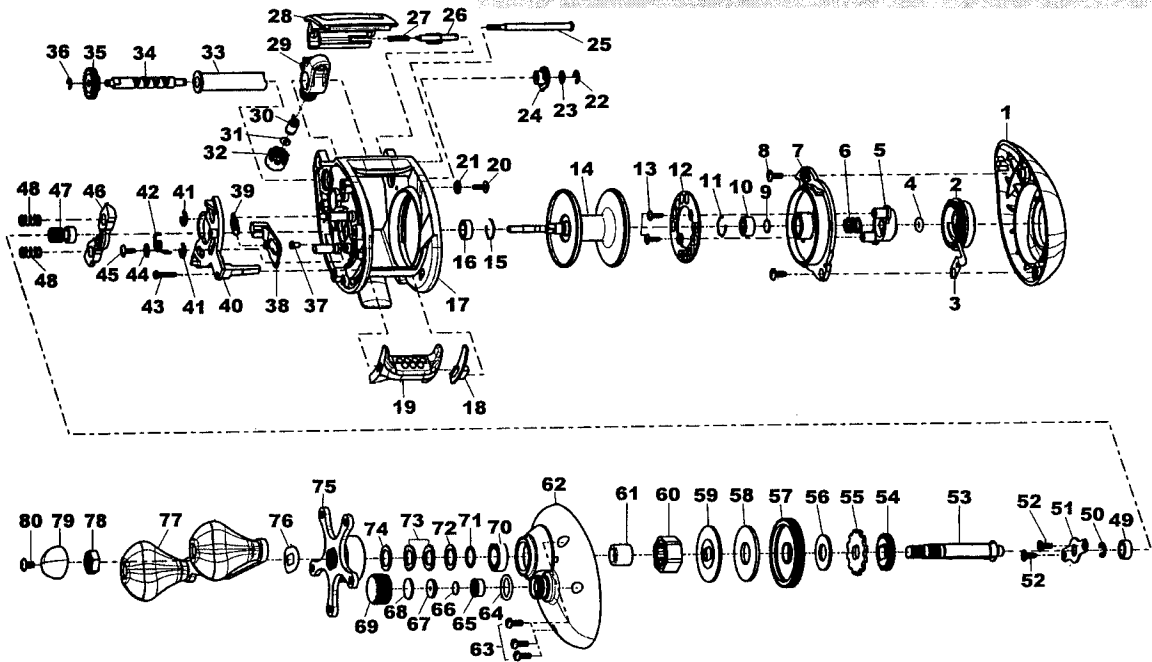


MODEL	L/R Hand	LINE CAPACITY	RATIO	WEIGHT	BEARINGS
A351	Left hand	165YD/12LB	5.1:1	8.5OZ	2 BB, 1 RB
A561	Left hand	165YD/12LB	6.2:1	8.5OZ	4 BB, 1 RB



Key #	Description	A561	A351	Key #	Description	A561	A351
1	Palm Side Cover	AX023-01	AX023-02	41	E-Clip	↔	↔
2	Magnet Dial	AX026-01	↔	42	Release Slider Spring	AX104-01	↔
3	Click Spring	CV108-01	↔	43	Thumb Bar Screw	↔	↔
4	Dial Friction Ring	↔	↔	44	Release Slider Guide Washer	↔	↔
5	Slide Cam	↔	↔	45	Release Slider Screw	↔	↔
6	Slide Cam Spring	↔	↔	46	Pinion Yoke	CV025-01	↔
7	Spool Cover	CV051-01	↔	47	Pinion Gear Assembly	VW311-02	ZW311
8	Spool Cover Screw	↔	↔	48	Pinion Yoke Spring	↔	↔
9	Spool Tension Shim	↔	↔	49	Crank Shaft Bearing (L)	SW017-01	N/A
10	Spool Shaft Bearing (Palm)	UW017-01	N/A	49	Crank Shaft Bushing (L)	N/A	ZW017
11	Clip Ring	↔	↔	50	E-Clip - Crank Shaft	↔	↔
12	Magnet Plate Assy	↔	↔	51	Crank Shaft Retainer	↔	↔
13	Magnet Plate Screw	↔	↔	52	Crank Shaft Retainer Screw	↔	↔
14	Spool Assy	ZW321-04	↔	53	Crank Shaft	ZW008-02	↔
15	Clip Ring	↔	↔	54	O/S Drive Gear	↔	↔
16	Spool Shaft Bearing (Gear)	↔	↔	55	Trip Ratchet	↔	↔
17	Frame	CV001-03	↔	56	Trip Ratchet Washer	↔	↔
18	Thumb Bar Retainer (Palm)	CV056-01	↔	57	Drive Gear	VW012-02	ZW012
19	Thumb Bar Assembly	AX309-01	↔	58	Drag Disc	↔	↔
20	Side Cover Stopper Collar Screw	↔	↔	59	Drag "D" Washer	↔	↔
21	Side Cover Stopper Collar	↔	↔	60	One Way Bearing	↔	↔
22	E-Clip	↔	↔	61	One Way Bearing Sleeve	↔	↔
23	Worm Shaft Washer	↔	↔	62	Gear Side Cover Assembly	AX324-01	AX324
24	Worm Shaft Bushing	↔	↔	63	Side Cover Screw	↔	↔
25	Stabilizer Bar	↔	↔	64	Tension Knob O-Ring	↔	↔
26	Side Cover Locking Lever	↔	↔	65	Tension Knob Bushing	↔	↔
27	Side Cover Locking Lever Spring	↔	↔	66	Spool Tension Washer	↔	↔
28	Front Support	AX027-01	AX027-02	67	Spool Tension Collar	↔	↔
29	Line Guide Carrier	↔	↔	68	Spool Cushion Washer	↔	↔
30	Line Guide Pawl	↔	↔	69	Spool Tension Knob	↔	↔
31	Line Guide Pawl Washer	↔	↔	70	Crank Shaft Bearing	↔	↔
32	Line Guide Carrier Screw	↔	↔	71	Crank Shaft Washer	↔	↔
33	Worm Shaft Guide	↔	↔	72	Crank Shaft Washer	↔	↔
34	Worm Shaft	↔	↔	73	Spring "D" Washer	↔	↔
35	O/S Pinion Gear	↔	↔	74	Crank Shaft Washer	↔	↔
36	E-Clip	↔	↔	75	Star Drag Assembly	ZV355-02	↔
37	Release Slider Spring Holder	↔	↔	76	Handle Washer	↔	↔
38	Kick Lever	CV077-01	↔	77	Handle Assembly	↔	↔
39	Kick Lever Spring	↔	↔	78	Handle Nut	QW003-02	↔
40	Release Slider	CV039-01	↔	79	Handle Nut Cap	↔	↔
				80	Handle Nut Cap Screw	↔	↔

Please call for parts availability and current pricing.  
 Webco Division Brunswick Corp. PO Box 270. Tulsa. OK 74101

**PLEASE ORDER BY PART NUMBER**  
 Phone: 918-831-6965 FAX: 1-800-982-809