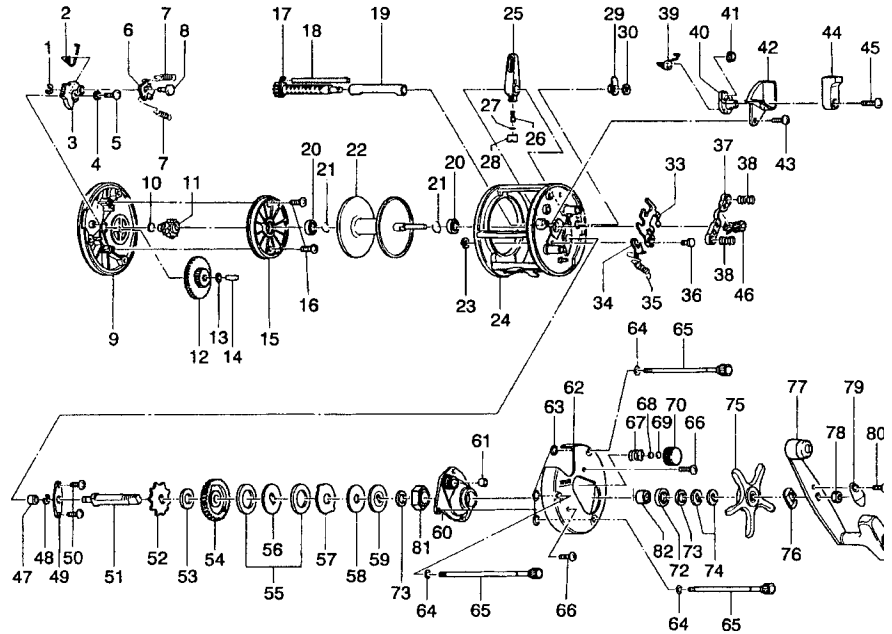


SPECIFICATIONS:

IR420: Hvy FW / Med Lt. SW
 IR430: X Hvy FW / Med Lt. SW
 Line Capacity: 300 yds. / 20 lb. (IR420)
 400 yds. / 20 lb. (IR430)
 Gear Ratio: 6.1:1
 Line Recovery (IPT): 32.5"
 Weight: 17.6 oz. (IR420) 17.9 oz. (IR430)
 Bearings: 3BB, 1RB

FEATURES:

One-Piece Aluminum Frame
 Continuous Anti-Reverse
 Oversized, Multi Disc drag system
 Audible Bait Clicker
 Stainless Steel bearings
 Aluminum Side Plates
 Color: Beige



Key #	Description	IR420	IR430	Key #	Description	IR420	IR430
1	Click Pawl Post E-Clip	↔	↔	42	Release Lever Cover	↔	↔
2	Bait Click Lever Spring	↔	↔	43	Release Slider Screw	↔	↔
3	Bait Click Lever	↔	↔	44	Release Lever	↔	↔
4	Bait Click Lever Washer	↔	↔	45	Release Lever Screw	↔	↔
5	Bait Click Lever Screw	↔	↔	46	Pinion Gear	LV011-01	LV011-01
6	Bait Click Pawl	↔	↔	47	Crank Shaft Bushing /Bearing(L)	XX017-01	XX017-01
7	Bait Click Spring	↔	↔	48	Crank Shaft Retainer E-Clip	↔	↔
8	Bait Click Pawl Post	↔	↔	49	Crank Shaft Retainer	↔	↔
9	Left Side Cover Assy	KV323-02	KV323-02	50	Crank Shaft Retainer Screw	↔	↔
10	Spool Shaft Washer	↔	↔	51	Crank Shaft	NV008-01	NV008-01
11	Oscillate Drive Gear	↔	↔	52	Ratchet	↔	↔
12	Oscillate Idle Gear	↔	↔	53	Ratchet Washer	↔	↔
13	Oscillate Idle Gear Washer	↔	↔	54	Drive Gear	LV012-01	LV012-01
14	Oscillate Idle Gear Post	↔	↔	55	Drag Disc ~A~	↔	↔
15	Spool Cover	↔	↔	56	Drag ~D~ Washer (L)	↔	↔
16	Spool Cover Screw	↔	↔	57	Drag Key Washer	↔	↔
17	Worm Shaft Assy	↔	↔	58	Drag Disc ~B~	↔	↔
18	Line Guide Carrier Guide	↔	↔	59	Drag ~D~ Washer (U)	NV045-01	NV045-01
19	Worm Shaft Guide	↔	↔	60	Crank Shaft Guide	NV066-01	NV066-01
20	Spool Shaft Bearing	↔	↔	61	Tension Knob Bushing	↔	↔
21	Clip Ring	↔	↔	62	Right Side Cover	KV024-02	KV024-04
22	Spool Assy	↔	↔	63	Thumb Screw O-Ring	↔	↔
23	Kick Lever Guide Post E-Clip	↔	↔	64	Thumb Screw Washer	↔	↔
24	Frame Assy	KV301-02	LV301-02	65	Thumb Screw Assy	↔	↔
25	Line Guide Carrier Assy	↔	↔	66	Right Side Cover Screw	↔	↔
26	Line Guide Pawl	↔	↔	67	Tension Knob Spring	↔	↔
27	Line Guide Pawl Washer	↔	↔	68	Spool Tension Washer	↔	↔
28	Line Guide Carrier Screw	↔	↔	69	Cushion Washer	↔	↔
29	Worm Shaft Bushing	↔	↔	70	Spool Tension Knob	↔	↔
30	Worm Shaft E-Clip	↔	↔	71	Crank Shaft Spacer	N/A	N/A
31	Anti Reverse Pawl Assy	N/A	N/A	72	Crank Shaft Bearing	N/A	N/A
32	Anti Reverse Pawl Post	N/A	N/A	73	Crank Shaft Washer	↔	↔
33	Release Slider	↔	↔	74	Spring "D" Washer	↔	↔
34	Kick Lever	↔	↔	75	Star Drag	↔	↔
35	Kick Lever Spring	↔	↔	76	Handle Washer	↔	↔
36	Kick Lever Guide Post	↔	↔	77	Handle Assy	KV318-02	KV318-02
37	Pinion Yoke	↔	↔	78	Handle Nut	↔	↔
38	Pinion Yoke Spring	↔	↔	79	Handle Nut Cap	↔	↔
39	Release Slider Cam Spring	↔	↔	80	Handle Nut Cap Screw	↔	↔
40	Release Slider Cam	↔	↔	81	One Way Bearing Assembly	NV363-01	NV363-01
41	Release Slider Guide Bushing	↔	↔	82	One Way Bearing Sleeve	NV052-01	NV052-01