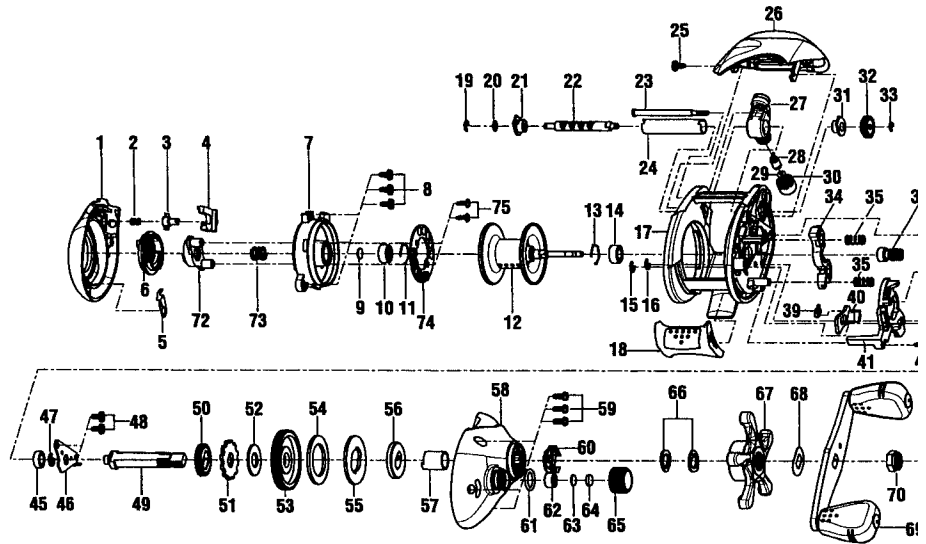


SPECIFICATIONS:

Medium FW / Light SW
 Line Capacity: 125 yds. / 12 lb.
 Gear Ratio: 5.1:1
 Retrieve Rate (IPT): 19.2"
 Weight: 8.5 oz.
 Bearings: 2BB, 1RB

FEATURES:

Magnetic Cast Control
 Magnum Gears
 Continuous Anti-Reverse
 Flippin' Switch
 Quick Release Side Cover
 One-Piece Frame and Spool
 Color: Green



| Key No. | Part No. | Description | Key No. | Part No. | Description |
|---------|----------|--------------------------------|---------|----------|----------------------------|
| 1 | XV023-02 | Palm Side Cover Assembly | 39 | QV097-01 | Kick Lever Spring |
| 2 | QV096-01 | Palm Side Cover Locking Spring | 40 | HV077-01 | Kick Lever |
| 3 | HV095-01 | Palm Side Cover Locking Pin | 41 | HV039-01 | Release Slider |
| 4 | HV119-01 | Palm Side Cover Release Button | 42 | HV102-01 | Release Slider Guide Pin |
| 5 | XV108-01 | Magnet Dial Spring | 43 | HV118-01 | Kick Lever Guide Pin |
| 6 | XV326-01 | Magnet Dial Assembly | 44 | ZW053-01 | Thumb Bar Screw |
| 7 | XV051-01 | Spool Cover | 45 | N/A | Crank Shaft Bearing (L) |
| 8 | QV125-02 | Spool Cover Screw | 45 | ZW017-01 | Crank Shaft Bushing (L) |
| 9 | QW032-04 | Spool Shaft Washer | 46 | QW120-01 | E-Clip |
| 10 | QV017-01 | Spool Shaft Bearing (Palm) | 47 | HV002-01 | Crank Shaft Retainer |
| 10 | N/A | Spool Shaft Bushing (Palm) | 48 | QV125-02 | Crank Shaft Retainer Screw |
| 11 | HV080-01 | Clip Ring | 49 | HV008-01 | Crank Shaft |
| 12 | XV321-01 | Spool Assembly | 50 | ZW112-01 | O/S Drive Gear |
| 13 | HV080-01 | Clip Ring | 51 | QW083-01 | Trip Ratchet |
| 14 | JX106-01 | Spool Shaft Bearing (Gear) | 52 | QW111-01 | Trip Ratchet Washer |
| 15 | NX092-01 | E-Clip | 53 | XV012-01 | Drive Gear |
| 16 | NX092-01 | E-Clip | 54 | HV059-01 | Drag Disc |
| 17 | HV001-01 | Frame | 55 | HV045-01 | Drag Key Washer |
| 18 | HV009-01 | Thumb Bar | 56 | HV036-01 | Link |
| 19 | NX092-01 | E-Clip | 57 | HV052-01 | One Way Bearing Sleeve |
| 20 | QW035-03 | Worm Shaft Washer | 58 | HV324-04 | Gear Side Cover Assembly |
| 21 | HV067-01 | Worm Shaft Bushing (Palm) | 59 | BV123-01 | Gear Side Cover Screw |
| 22 | HV072-01 | Worm Shaft | 60 | ZW4114 | Drag Click Spring Assembly |
| 23 | ZW061-01 | Stablizer Bar | 61 | QW101-01 | Tension Knob O-Ring |
| 24 | HV016-01 | Worm Shaft Guide | 62 | QW117-01 | Tension Knob Bushing |
| 25 | QV125-02 | Hood Screw | 63 | QW032-04 | Spool Tension Washer |
| 26 | XV327-02 | Hood Assembly | 64 | MV082-01 | Spool Cushion Washer |
| 27 | HV347-01 | Line Guide Carrier Assembly | 65 | XV033-01 | Spool Tension Knob |
| 28 | ZW006-01 | Line Guide Pawl | 66 | QW046-02 | Spring "D" Washer |
| 29 | BV035-01 | Line Guide Carrier Washer | 67 | XV055-01 | Star Drag |
| 30 | ZW007-01 | Line Guide Carrier Screw | 68 | QW054-01 | Handle Washer |
| 31 | HV068-01 | Worm Shaft Bushing (Gear) | 69 | XV318-01 | Handle Assembly |
| 32 | HV085-01 | O/S Pinion Gear | 70 | RV003-01 | Handle Nut |
| 33 | NX090-01 | E-Clip | 71 | RV034-03 | Handle Nut Cap |
| 34 | HV025-01 | Pinion Yoke | 72 | XV028-01 | Slide Cam |
| 35 | QW040-01 | Pinion Yoke Spring | 73 | XV071-01 | Slide Cam Spring |
| 36 | ZW311-01 | Pinion Gear Assembly | 74 | XV330-01 | Magnet Assembly |
| 37 | HV104-01 | Release Slider Spring | 75 | QW076-01 | Magnet Plate Screw |
| 38 | HV087-01 | Flippin' Switch | | | |