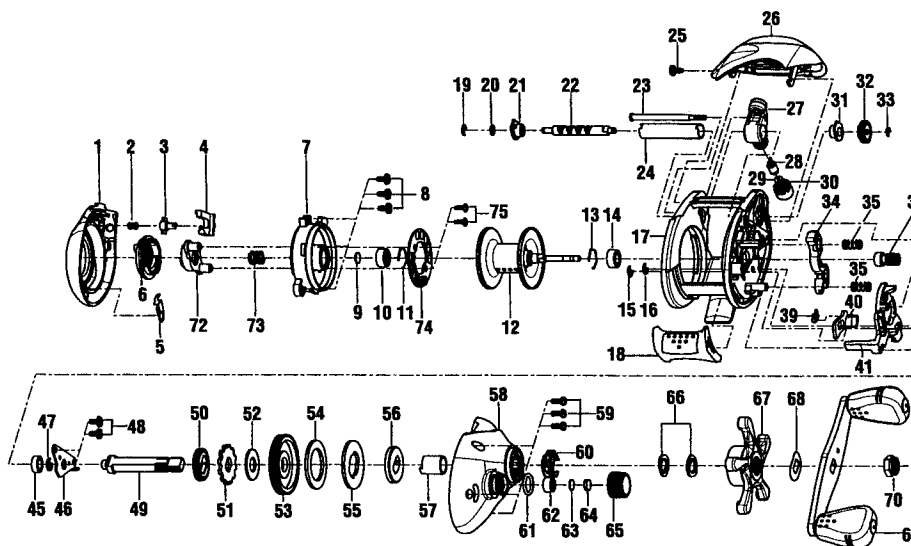


SPECIFICATIONS:

Medium FW / Light SW
 Line Capacity: 125 yds. / 12 lb.
 Gear Ratio: 6.2:1
 Retrieve Rate (IPT): 23.4"
 Weight: 8.5 oz.
 Bearings: 3BB, 1RB

FEATURES:

Magnetic Cast Control
 Magnum Gears
 Continuous Anti-Reverse
 Flippin' Switch
 Quick Release Side Cover
 One-Piece Frame and Spool
 Color: Gold



Key No.	Part No.	Description	Key No.	Part No.	Description
1	XV023-01	Palm Side Cover Assembly	39	QV097-01	Kick Lever Spring
2	QV096-01	Palm Side Cover Locking Spring	40	HV077-01	Kick Lever
3	HV095-01	Palm Side Cover Locking Pin	41	HV039-01	Release Slider
4	HV119-01	Palm Side Cover Release Button	42	HV102-01	Release Slider Guide Pin
5	XV108-01	Magnet Dial Spring	43	HV118-01	Kick Lever Guide Pin
6	XV326-01	Magnet Dial Assembly	44	ZW053-01	Thumb Bar Screw
7	XV051-01	Spool Cover	45	SW017-01	Crank Shaft Bearing (L)
8	QV125-02	Spool Cover Screw	45	N/A	Crank Shaft Bushing (L)
9	QW032-04	Spool Shaft Washer	46	QW120-01	E-Clip
10	QV017-01	Spool Shaft Bearing (Palm)	47	HV002-01	Crank Shaft Retainer
11	N/A	Spool Shaft Bushing (Palm)	48	QV125-02	Crank Shaft Retainer Screw
12	XV321-01	Spool Assembly	49	HV008-01	Crank Shaft
13	HV080-01	Clip Ring	50	ZW112-01	O/S Drive Gear
14	JX106-01	Spool Shaft Bearing (Gear)	51	QW083-01	Trip Ratchet
15	NX092-01	E-Clip	52	QW111-01	Trip Ratchet Washer
16	NX092-01	E-Clip	53	HV012-01	Drive Gear
17	HV001-01	Frame	54	HV059-01	Drag Disc
18	HV009-01	Thumb Bar	55	HV045-01	Drag Key Washer
19	NX092-01	E-Clip	56	HV036-01	Link
20	QW035-03	Worm Shaft Washer	57	HV052-01	One Way Bearing Sleeve
21	HV067-01	Worm Shaft Bushing (Palm)	58	HV324-03	Gear Side Cover Assembly
22	HV072-01	Worm Shaft	59	BV123-01	Gear Side Cover Screw
23	ZW061-01	Stablizer Bar	60	ZW4114	Drag Click Spring Assembly
24	HV016-01	Worm Shaft Guide	61	QW101-01	Tension Knob O-Ring
25	QV125-02	Hood Screw	62	QW117-01	Tension Knob Bushing
26	XV327-01	Hood Assembly	63	QW032-04	Spool Tension Washer
27	HV347-01	Line Guide Carrier Assembly	64	MV082-01	Spool Cushion Washer
28	ZW006-01	Line Guide Pawl	65	XV033-01	Spool Tension Knob
29	BV035-01	Line Guide Carrier Washer	66	QW046-02	Spring "D" Washer
30	ZW007-01	Line Guide Carrier Screw	67	XV055-01	Star Drag
31	HV068-01	Worm Shaft Bushing (Gear)	68	QW054-01	Handle Washer
32	HV085-01	O/S Pinion Gear	69	XV318-01	Handle Assembly
33	NX090-01	E-Clip	70	RV003-01	Handle Nut
34	HV025-01	Pinion Yoke	71	RV034-03	Handle Nut Cap
35	QW040-01	Pinion Yoke Spring	72	XV028-01	Slide Cam
36	VW311-01	Pinion Gear Assembly	73	XV071-01	Slide Cam Spring
37	HV104-01	Release Slider Spring	74	XV330-01	Magnet Assembly
38	HV087-01	Flipping Switch	75	QW076-01	Magnet Plate Screw