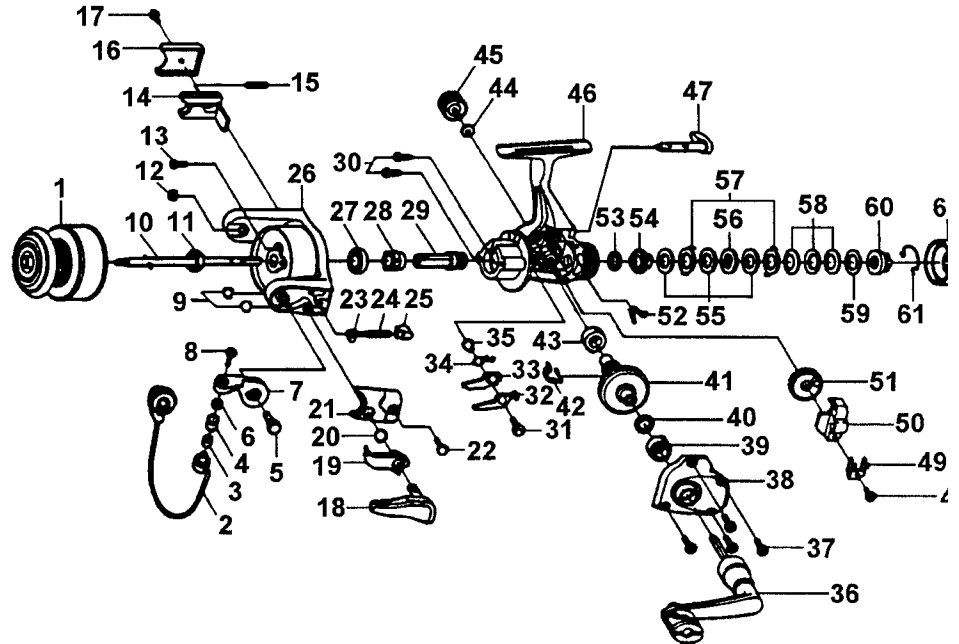


SPECIFICATIONS:

Light Freshwater
 Line Capacity: 140 yds. / 6 lb.
 Gear Ratio: 4.4:1
 Weight: 7.8 oz.
 1 Ball Bearing

FEATURES:

Rear Drag
 Light Weight Graphite
 Construction
 Three-Way Silent Anti-Reverse
 (On-Off-Center)
 Right/Left Interchangeable
 Handle
 Internal Bail Trip
 Triggercast Trigger
 Pop-Off Spool



KEY PART NO.	NUMBER	DESCRIPTION	KEY PART NO.	NUMBER	DESCRIPTION
1	JH321-53	SPOOL ASSEMBLY	33	GU074-01	ANTI-REVERSE PAWL "B"
2	HU347-61	BAIL ASSEMBLY	34	GU061-01	ANTI-REVERSE PAWL SPRING
3	MT016-01	LINE ROLLER BUSHING	35	GU091-01	ANTI-REVERSE PAWL POST
4	KH004-02	LINE ROLLER	36	HU318-05	HANDLE ASSEMBLY
5	HU051-03	ARM LEVER PIN	37	GU057-01	BODY COVER SCREW
6	GU105-07	LINE ROLLER WASHER	38	JH323-21	BODY COVER ASSEMBLY
7	KU007-02	ARM LEVER	39	GU027-01	GEAR SHAFT BUSHING
8	AQ108-04	LINE SLIDER SCREW	40	GU105-08	ADJUSTMENT WASHER
9	KQ034-01	E-CLIP	41	GU012-01	DRIVE GEAR
10	JU315-02	MAIN SHAFT ASSEMBLY	42	GU086-01	SILENT CAM
11	GU006-01	ROTOR NUT	43	GU027-01	GEAR SHAFT BUSHING
12	KQ034-01	E-CLIP	44	GU105-01	HANDLE SCREW WASHER
13	GU077-08	ROTOR NUT LOCK SCREW	45	XU073-01	HANDLE SCREW
14	HU019-01	KICK LEVER	46	JH001-20	BODY
15	KQ049-04	KICK LEVER SPRING	47	KH090-01	ANTI-REVERSE LEVER
16	HU046-01	KICK LEVER COVER	48	JU100-01	OSCILLATOR RETAINER SCREW
17	GU077-02	KICK LEVER COVER SCREW	49	HU078-01	OSCILLATOR SLIDE RETAINER
18	HU312-04	TRIGGER ASSEMBLY	50	HU025-01	OSCILLATOR SLIDER
19	HU398-01	TRIGGER LINK ASSEMBLY	51	HU053-01	OSCILLATOR GEAR
20	NL096-01	TRIGGER SPRING	52	GU089-01	ANTI-REVERSE LEVER SPRING
21	HU087-61	ARM LEVER SPRING COVER	53	GU105-34	DRAG FRICTION WASHER
22	GU077-02	ARM LEVER COVER SCREW	54	HU075-01	DRAG CLICK GEAR
23	KQ031-01	ARM LEVER SPRING PIN	55	GU105-35	DRAG WASHER "B"
24	KQ049-05	ARM LEVER SPRING	56	HU080-01	DRAG WASHER "D"
25	QL020-01	ARM LEVER SPRING HOLDER	57	HU081-01	DRAG WASHER "A"
26	HU009-07	ROTOR	58	HU043-01	DRAG SPRING
27	AQ028-01	BALL BEARING	59	GU105-24	DRAG WASHER
28	HU060-01	ANTI-REVERSE RATCHET	60	HU066-01	DRAG NUT
29	GU011-02	PINION GEAR	61	HU070-01	DRAG CLICK SPRING
30	GU077-01	BEARING SCREW	62	MU032-02	DRAG KNOB
31	GU077-05	ANTI-REVERSE PAWL SCREW	63	JH101-01	DRAG KNOB SCREW
32	GU063-01	ANTI-REVERSE PAWL "A"			