



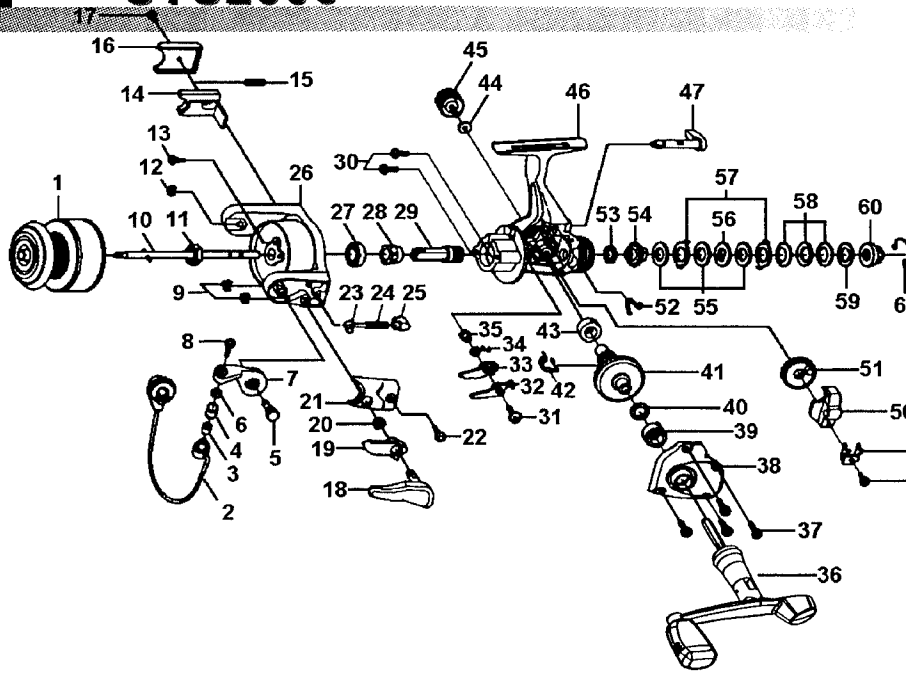
STS2000

SPECIFICATIONS:

Light Freshwater
 Line Capacity: 140 yds. / 6 lb.
 Gear Ratio: 4.1:1
 Weight: 8.8 oz.
 2 Ball Bearings

FEATURES:

Rear Drag
 Three Way Selective Anti-Reverse
 Aluminum Long Stroke Spool
 Right/Left Hand Retrieve
 Balanced Handle and Rotor



KEY PART NO.	NUMBER	DESCRIPTION	KEY PART NO.	NUMBER	DESCRIPTION
1	HU321-01	SPOOL ASSEMBLY	33	GU074-01	ANTI-REVERSE PAWL "B" (ON)
2	HU347-63	BAIL ASSEMBLY	34	GU061-01	ANTI-REVERSE PAWL SPRING
3	MT016-01	LINE ROLLER BUSHING	35	GU091-01	ANTI-REVERSE PAWL POST
4	KH004-02	LINE ROLLER	36	JH318-22	HANDLE ASSEMBLY
5	GU051-03	ARM LEVER PIN	37	GU057-02	BODY COVER SCREW
6	GU105-07	LINE ROLLER WASHER	38	JH323-19	BODY COVER ASSEMBLY
7	KU007-01	ARM LEVER	39	GU157-01	BODY COVER BEARING
8	AQ108-04	LINE SLIDER SCREW	40	GU105-08	ADJUSTMENT WASHER
9	KQ034-01	E-CLIP	41	GU012-01	DRIVE GEAR
10	JU315-02	MAIN SHAFT ASSEMBLY	42	GU086-01	SILENT CAM
11	GU006-01	ROTOR NUT	43	GU027-01	GEAR SHAFT BUSHING
12	KQ034-01	E-CLIP	44	GU105-01	HANDLE SCREW WASHER
13	GU077-04	ROTOR NUT LOCK SCREW	45	XU073-04	HANDLE SCREW
14	HU019-01	KICK LEVER	46	JH001-18	BODY
15	KQ049-04	KICK LEVER SPRING	47	KH090-03	ANTI-REVERSE LEVER
16	HU046-06	KICK LEVER COVER	48	JU100-01	OSCILLATOR RETAINER SCRE
17	GU077-02	KICK LEVER COVER SCREW	49	HU078-01	OSCILLATOR SLIDE RETAINER
18	HU312-03	TRIGGER ASSEMBLY	50	HU025-01	OSCILLATOR SLIDER
19	HU098-02	TRIGGER LINK	51	HU053-01	OSCILLATOR GEAR
20	NL096-01	TRIGGER SPRING	52	GU089-01	ANTI-REVERSE LEVER SPRING
21	HU087-62	ARM LEVER SPRING COVER	53	GU105-34	DRAG FRICTION WASHER 'A'
22	GU077-02	ARM LEVER COVER SCREW	54	HU075-01	DRAG CLICK GEAR
23	KQ031-01	ARM LEVER SPRING PIN	55	GU105-35	DRAG WASHER "B"
24	KQ049-05	ARM LEVER SPRING	56	HU080-01	DRAG WASHER 'D'
25	QL020-01	ARM LEVER SPRING HOLDER	57	HU081-01	DRAG WASHER KEYED
26	HU009-09	ROTOR	58	HU043-01	DRAG SPRING
27	AQ028-01	BALL BEARING	59	GU105-24	DRAG WASHER
28	HU060-01	ANTI-REVERSE RATCHET	60	JH066-01	DRAG NUT
29	GU011-02	PINION	61	JH070-01	DRAG RETAINER CLIP
30	GU077-01	BEARING SCREW	62	DU332-01	DRAG KNOB ASSEMBLY
31	GU077-05	ANTI-REVERSE PAWL SCREW	63	JH101-03	DRAG KNOB SCREW
32	GU063-01	ANTI-REVERSE PAWL "A" (CNTR)			

Please call for parts pricing and availability.

PLEASE ORDER BY PART NU