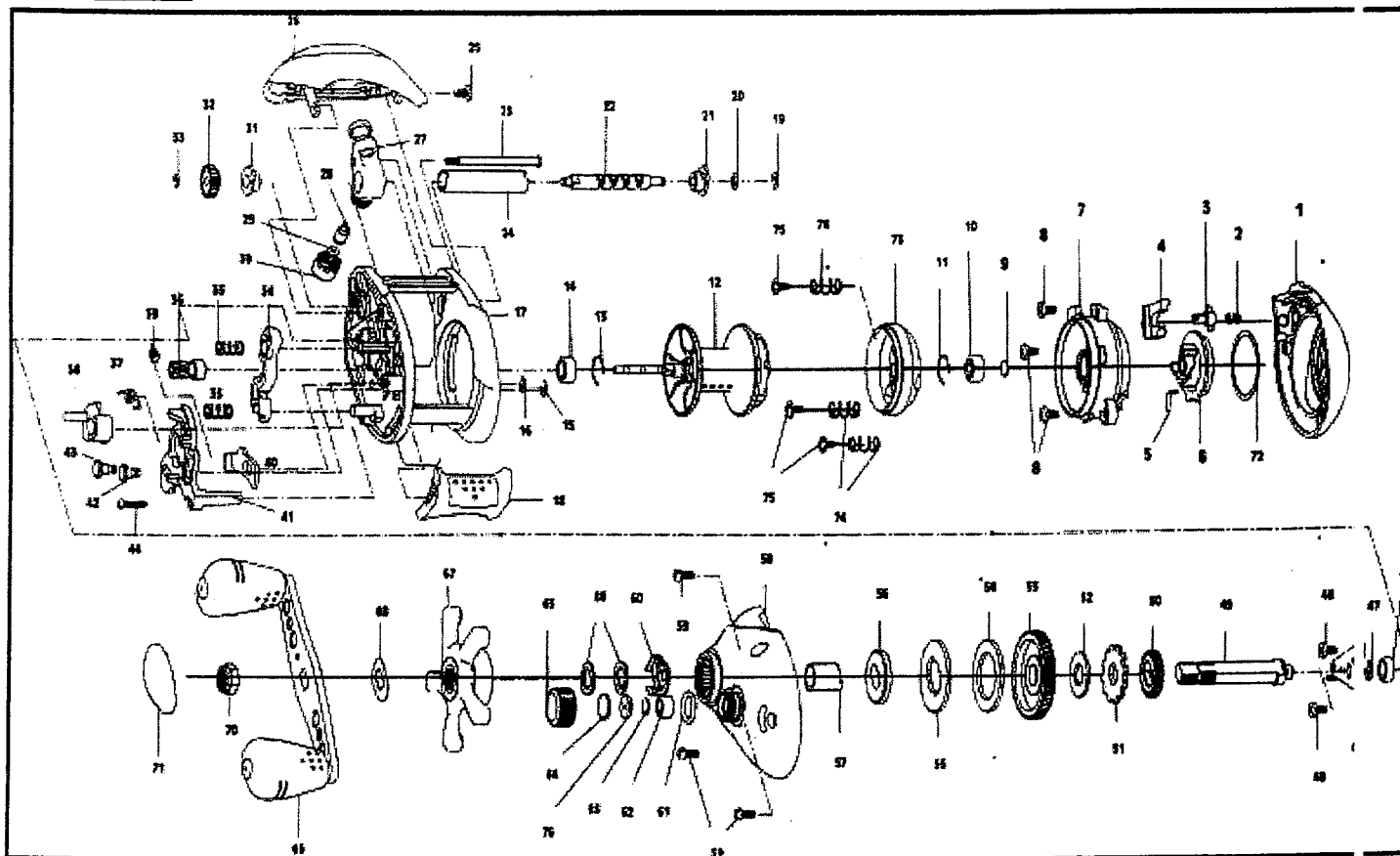


Assembly :

AC501PT

Schematic View



Assembly : **AC501PT**

Part List

KEY No.	PART No.	PRICE	DESCRIPTION	COMMENTS	KEY No.	PART No.	PRICE	DESCRIPTION	COMMENTS
1	BX323-03	-	Palm Side Cover Assembly	-	46	QW120-01	-	E-Clip	-
2	QV096-01	-	Palm Side Cover Locking Spring	-	47	HV002-02	-	Crank Shaft Retainer	-
3	BX095-01	-	Palm Side Cover Locking Pin	-	48	QV125-02	-	Crank Shaft Retainer Screw	-
4	BX119-01	-	Palm Side Cover Release Button	-	49	HV008-02	-	Crank Shaft	-
5	HV108-01	-	Centrifugal Dial Spring	-	50	ZW112-01	-	O/S Drive Gear	-
6	BX026-01	-	Centrifugal Dial	-	51	QW083-01	-	Trip Ratchet	-
7	BX051-01	-	Spool Cover	-	52	QW111-01	-	Trip Ratchet Washer	-
8	QV125-02	-	Spool Cover Screw	-	53	HV012-02	-	Drive Gear	-
9	QW032-04	-	Spool Shaft Washer	-	54	HV059-01	-	Drag Disc	-
10	QV017-01	-	Spool Shaft Bearing (Palm)	-	55	HV045-01	-	Drag Key Washer	-
11	HV080-01	-	Clip Ring	-	56	HV036-01	-	Link	-
12	BX321-02	-	Spool Assembly	-	57	HV052-01	-	One Way Bearing Sleeve	-
13	HV080-01	-	Clip Ring	-	58	BX324-03	-	Gear Side Cover Assembly	-
14	JX106-01	-	Spool Shaft Bearing (Gear)	-	59	BV123-01	-	Gear Side Cover Screw	-
15	NX092-01	-	E-Clip	-	60	ZW4114	-	Drag Click Spring Assembly	-
16	NX092-01	-	E-Clip	-	61	QW101-01	-	Tension Knob O-Ring	-
17	BX001-01	-	Frame	-	62	SW117-01	-	Tension Knob Bearing	-
18	BX009-01	-	Thumb Bar	-	62	N/A	-	Tension Knob Bushing	-
19	NX092-01	-	E-Clip	-	63	QW032-04	-	Spool Tension Washer	-
20	QW035-03	-	Worm Shaft Washer	-	64	QW082-01	-	Spool Cushion Washer	-
21	HV067-01	-	Worm Shaft Bushing (Palm)	-	65	HV033-01	-	Spool Tension Knob	-
22	HV072-02	-	Worm Shaft	-	65	CX333-01	-	Spool Tension Knob Assembly	-
23	ZW061-01	-	Stablizer Bar	-	66	QW046-02	-	Spring "D" Washer	-
24	HV016-01	-	Worm Shaft Guide	-	67	HV355-06	-	Star Drag Assembly	-
25	QV125-02	-	Hood Screw	-	68	QW054-01	-	Handle Washer	-
26	BX327-03	-	Hood Assembly	-	69	HV318-02	-	Handle Assembly	-
27	HV347-01	-	Line Guide Carrier Assembly	-	70	RV003-02	-	Handle Nut	-
28	CX006-01	-	Line Guide Pawl	-	71	RV034-02	-	Handle Nut Cap	-
29	BV035-01	-	Line Guide Carrier Washer	-	72	QV111-01	-	Centrifugal Dial Washer	-
30	ZW007-02	-	Line Guide Carrier Screw	-	73	BX342-01	-	Brake Ring Assembly	-
31	HV068-01	-	Worm Shaft Bushing (Gear)	-	74	QV070-01	-	Brake Ring Slider Spring	-
32	HV085-01	-	O/S Pinion Gear	-	75	QV076-01	-	Brake Ring Retainer Screw	-
33	NX090-01	-	E-Clip	-	76	QW081-01	-	Spool Tension Collar	-
34	BX025-01	-	Pinion Yoke	-					
35	QW040-01	-	Pinion Yoke Spring	-					
36	VW311-02	-	Pinion Gear Assembly	-					
37	BX104-01	-	Release Slider Spring	-					
38	BX087-02	-	Fillipping Switch	-					
39	QV097-01	-	Kick Lever Spring	-					
40	BX077-01	-	Kick Lever	-					
41	BX039-01	-	Release Sllder	-					
42	HV102-01	-	Release Slider Guide Pin	-					
43	HV118-01	-	Kick Lever Guide Pin	-					
44	ZW053-01	-	Thumb Bar Screw	-					
45	SW017-01	-	Crank Shaft Bearing (L)	-					