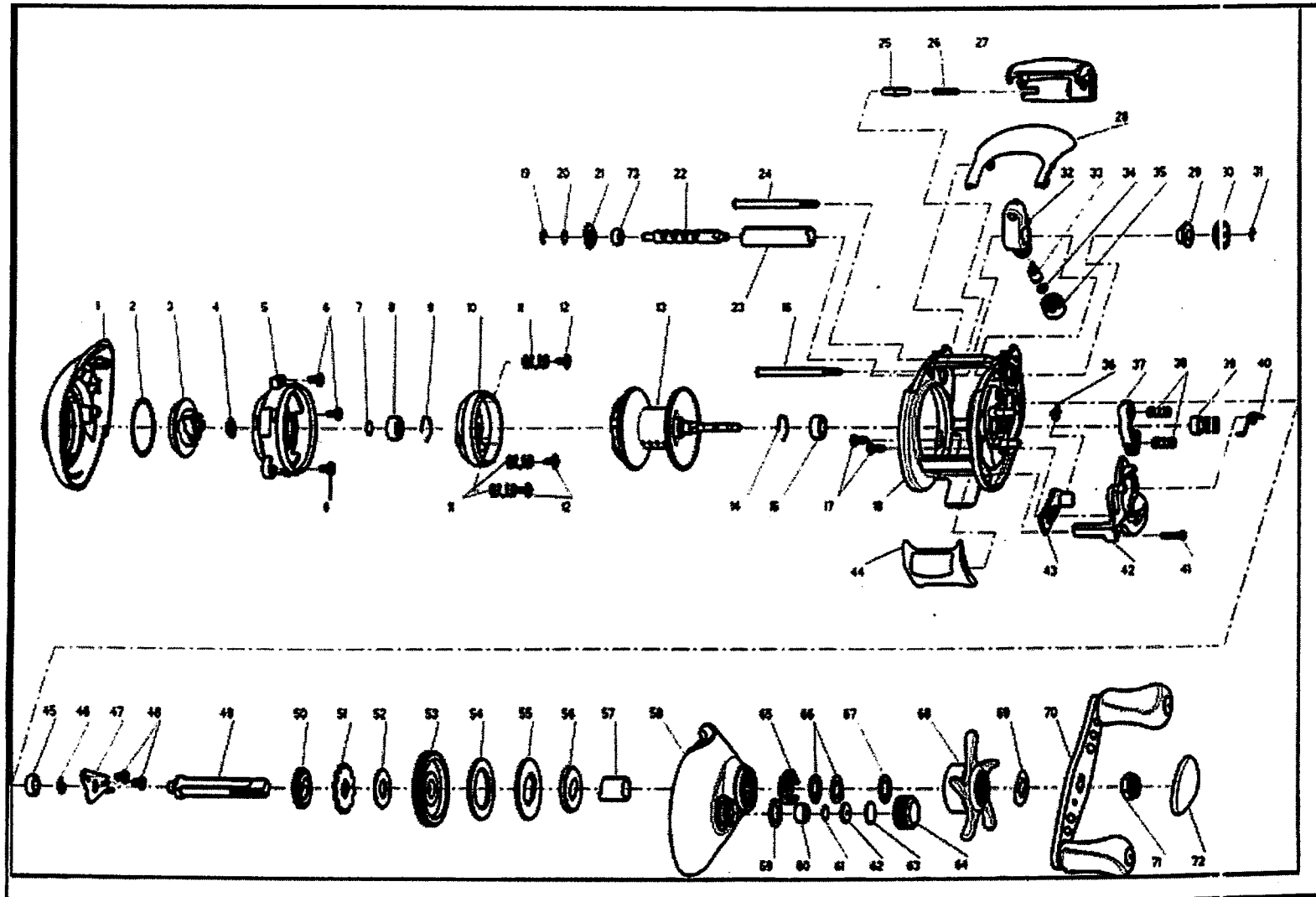


Assembly : **E600CX**

Schematic View



Assembly : **E600CX**

Part List

KEY No.	PART No.	PRICE	DESCRIPTION	COMMENTS	KEY No.	PART No.	PRICE	DESCRIPTION	COMMENTS
1	CX323-01	-	Palm Side Cover Assembly	-	45	SW017-01	-	Crank Shaft Ball Bearing -L	-
2	QV111-01	-	Centrifugal Dial Washer	-	46	QW120-01	-	E-Clip	-
3	CX326-01	-	Centrifugal Dial Assembly	-	47	CX002-01	-	Crank Shaft Retainer	-
4	CX108-01	-	Centrifugal Dial Spring	-	48	JX107-01	-	Crank Shaft Retainer Screw	-
5	CX051-01	-	Spool Cover	-	49	CX008-01	-	Crank Shaft	-
6	QV125-01	-	Spool Cover Screw	-	50	ZW112-01	-	O/S Drive Gear	-
7	QW032-04	-	Spool Tension Shlm	-	51	QW083-01	-	Trip Ratchet	-
8	QV017-01	-	Spool Shaft Ball Bearing - Palm	-	52	QW111-01	-	Trip Ratchet Washer	-
9	HV080-01	-	Clip Ring	-	53	HV012-01	-	Drive Gear	-
10	HV342-02	-	Brake Ring Assembly	-	54	HV059-01	-	Drag Disc	-
11	QV070-01	-	Brake Ring Retainer Spring	-	55	HV045-01	-	Drag Key Washer	-
12	CX076-01	-	Brake Ring Retainer Screw	-	56	HV036-01	-	Link	-
13	CX321-01	-	Spool Assembly	-	57	HV052-01	-	One Way Clutch Sleeve	-
14	HV080-01	-	Clip Ring	-	58	CX324-01	-	Gear Side Cover Assembly	-
15	JX106-01	-	Spool Shaft Ball Bearing - Gear	-	59	QW101-01	-	Spool Tension Knob O-Ring	-
16	CX061-01	-	Stabilizer Bar	-	60	SW117-01	-	Spool Tension Knob Ball Bearing	-
17	BV123-01	-	Gear Side Cover Screw	-	60	N/A	-	Spool Tension Knob Bushing	-
18	CX001-01	-	Frame	-	61	QW032-04	-	Spool Tension Washer	-
19	NX090-01	-	E-Clip	-	62	QW081-01	-	Spool Tension Collar	-
20	QW035-03	-	Worm Shaft Washer	-	63	QW082-01	-	Spool Cushion Washer	-
21	CX067-01	-	Worm Shaft Bearing Retainer	-	64	HV033-03	-	Spool Tension Knob	-
21	N/A	-	Worm Shaft Bushing	-	64	N/A	-	Spool Tension Knob Assembly	-
22	HV072-01	-	Worm Shaft	-	65	ZW4114	-	Drag Click Spring Assembly	-
23	HV016-01	-	Worm Shaft Guide	-	66	QW046-02	-	Spring "D" Washer	-
24	CX061-01	-	Stabilizer Bar	-	67	ZW032-02	-	Star Drag Washer	-
25	CX119-01	-	Side Cover Locking Lever	-	68	CX355-01	-	Star Drag Assembly	-
26	ZW096-01	-	Side Cover Locking Lever Spring	-	69	QW054-01	-	Handle Washer	-
27	CX099-01	-	Front Support	-	70	CX318-01	-	Handle Assembly	-
28	CX027-01	-	Hood	-	71	RV003-01	-	Handle Nut	-
29	HV068-01	-	Worm Shaft Bushing - Gear	-	72	RV034-04	-	Handle Nut Cap	-
30	HV085-01	-	O/S Pinion Gear	-	73	XX117-01	-	Worm Shaft Ball Bearing	-
31	NX090-01	-	E-Clip	-					
32	CX047-01	-	Line Guide Carrier	-					
33	ZW006-01	-	Line Guide Pawl	-					
34	BV035-01	-	Line Guide Carrier Washer	-					
35	ZW007-02	-	Line Guide Carrier Screw	-					
36	QV097-01	-	Kick Lever Spring	-					
37	CX025-01	-	Pinion Yoke	-					
38	CX040-01	-	Pinion Yoke Spring	-					
39	VW311-01	-	Pinion Gear Assembly	-					
40	CX104-01	-	Release Slider Spring	-					
41	ZW053-01	-	Thumb Bar Screw	-					
42	CX039-01	-	Release Slider	-					
43	CX077-01	-	Kick Lever	-					
44	CX009-01	-	Thumb Bar	-					