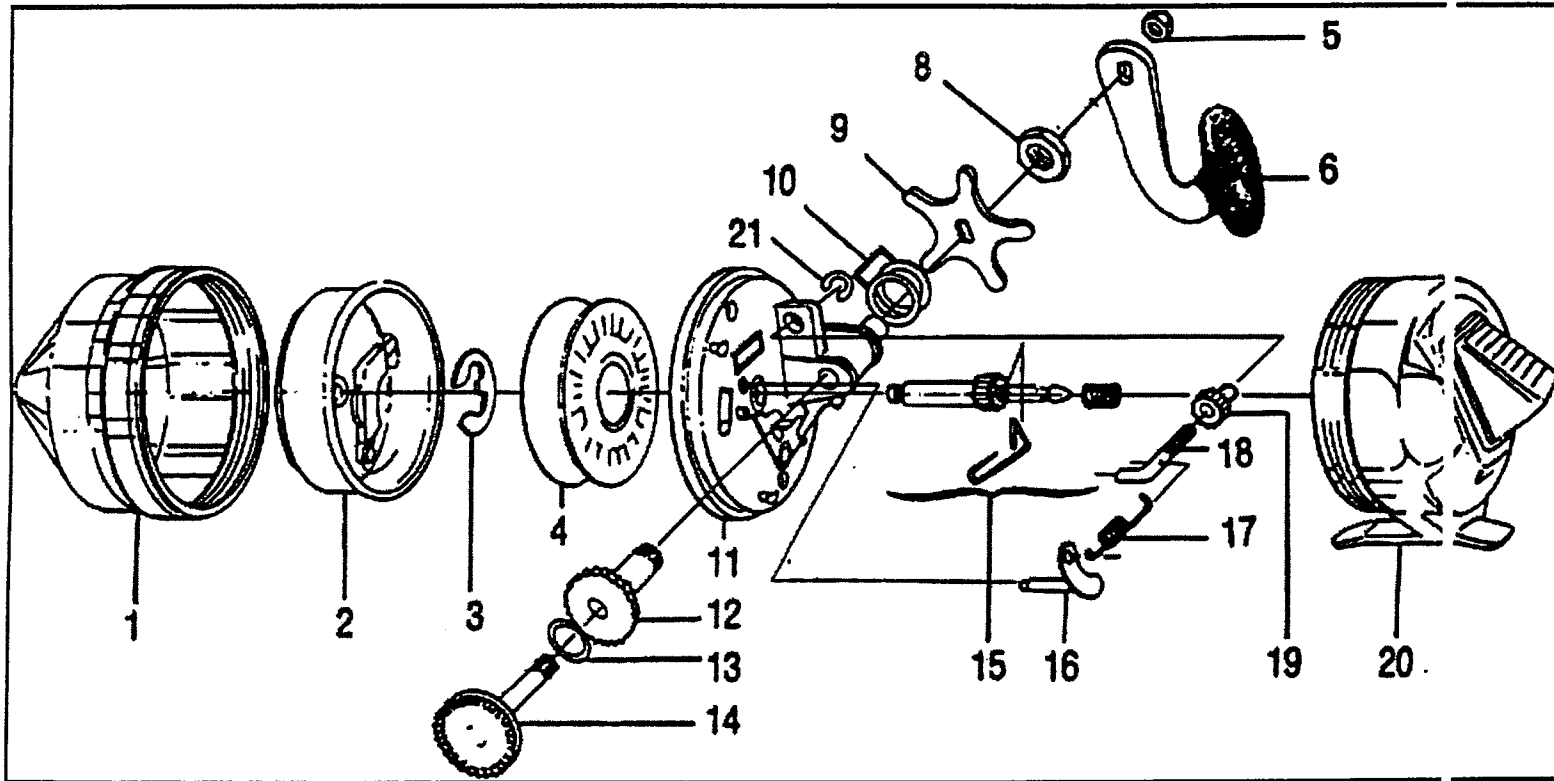


Assembly : **HT80**

Schematic View



Assembly : HT80

Part List

KEY No.	PART No.	PRICE	DESCRIPTION	COMMENTS
1	FE324-05	6.85	Front Cover Assy.	-
2	EE310-01	6.85	Spinnerhead Assy.	-
3	GZ034-01	0.6	Spool Clip	-
4	FE021-01	4.61	Spool	-
4	FE321-03	6.85	Spool w/ 20# Line	-
5	QZ003-02	0.76	Crank Nut	-
6	PY318-06	3.75	Handle S/A	-
8	PY087-01	0.66	Crank Bushing Nut	-
9	PY032-01	1.41	Drag Adjust Star	-
10	MZ088-01	0.52	O-Ring	-
11	PY301-02	5.34	Body Assy.	-
12	PY326-02	4.45	Crank Bushing	-
13	PZ070-01	0.3	Thrust Washer	-
14	PZ308-02	4.8	Crank Shaft Assy.	-
15	FE315-01	3.92	Center Shaft Assy.	-
16	PY307-02	1.76	Clutch Shaft	-
17	MZ085-01	0.6	Clutch Spring	-
18	MZ032-01	0.65	Clutch Screw	-
19	MZ086-01	0.65	Clutch Pinion	-
20	EE323-08	6.83	Back Cover Assy.	-
21	MZ089-01	0.52	Clutch Pin. Ret. Ring	-
22	PY009-01	1.11	Thumb stop	-