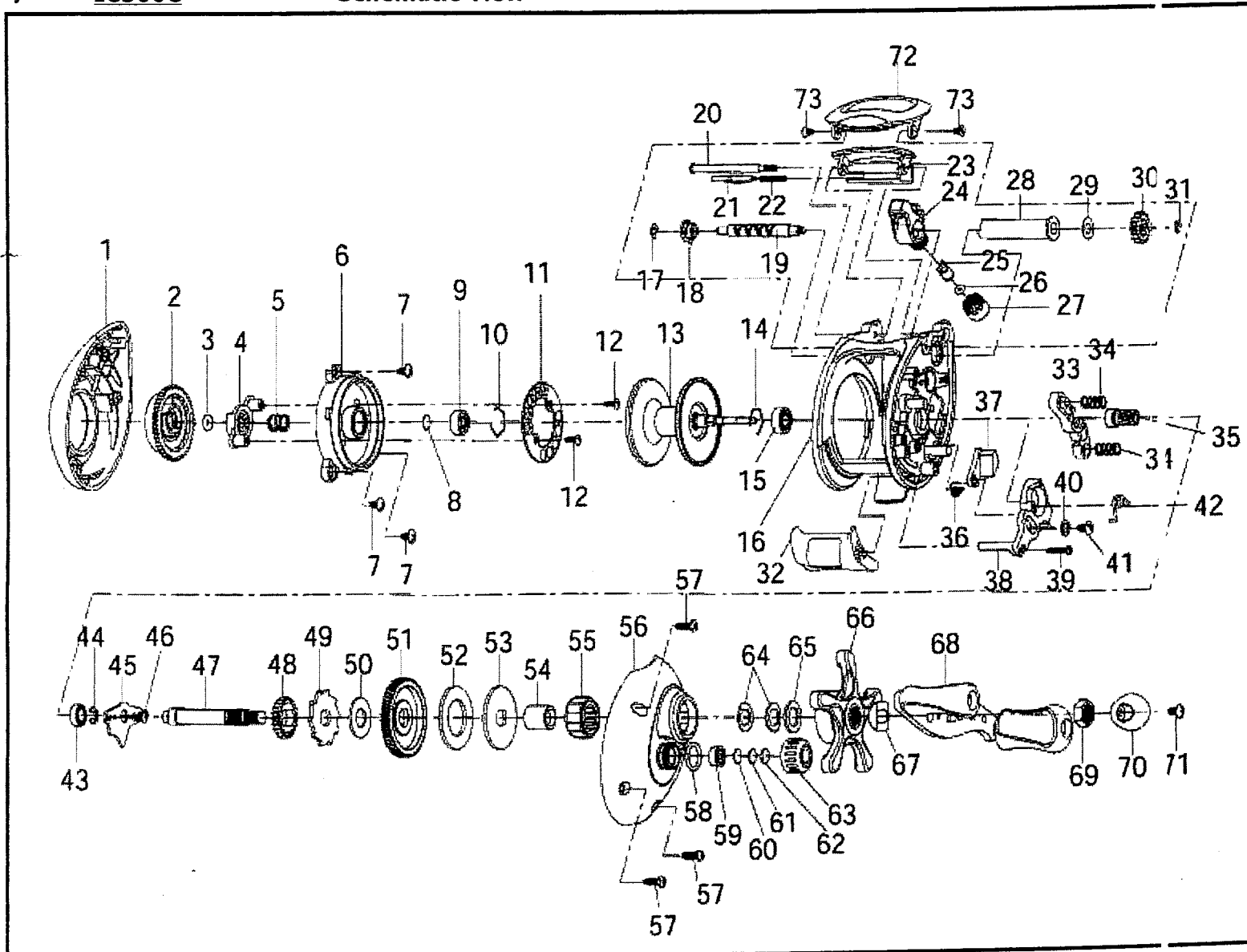


Assembly : **IC300C**

Schematic View



Assembly : **IC300C**

Part List

| KEY No. | PART No. | PRICE | DESCRIPTION | COMMENTS | KEY No. | PART No. | PRICE | DESCRIPTION | COMMENTS |
|---------|----------|-------|-----------------------------|----------|---------|----------|-------|----------------------------|----------|
| 1 | EX323-02 | - | Palm Side Cover Assembly | - | 44 | QW120-01 | - | E-Clip | - |
| 2 | EX026-01 | - | Magnet Dial | - | 45 | EX002-01 | - | Crank Shaft Retainer | - |
| 3 | NX105-01 | - | Magnet Dial Friction Ring | - | 46 | EX076-01 | - | Crank Shaft Retainer Screw | - |
| 4 | EX028-01 | - | Slide Cam | - | 47 | EX008-01 | - | Crank Shaft | - |
| 5 | EX071-01 | - | Slide Cam Spring | - | 48 | EX112-01 | - | O/S Drive Gear | - |
| 6 | EX051-01 | - | Spool Cover | - | 49 | EX083-01 | - | Trip Ratchet | - |
| 7 | QW125-02 | - | Spool Cover Screw | - | 50 | QW111-01 | - | Trip Ratchet Washer | - |
| 8 | QW032-04 | - | Spool Shaft Washer | - | 51 | FX012-01 | - | Drive Gear | - |
| 9 | N/A | - | Spool Shaft Bushing (Palm) | - | 52 | JX059-01 | - | Drag Disc | - |
| 9 | QV017-01 | - | Spool Shaft Bearing (Palm) | - | 53 | EX045-01 | - | Drag "D" Washer | - |
| 10 | HV080-01 | - | Clip Ring | - | 54 | EX052-01 | - | One Way Bearing Sleeve | - |
| 11 | EX330-01 | - | Magnet Assembly | - | 55 | EX063-01 | - | One Way Bearing | - |
| 12 | QW076-01 | - | Magnet Plate Screw | - | 56 | EX024-02 | - | Gear Side Cover | - |
| 13 | EX321-01 | - | Spool Assembly | - | 57 | JX050-02 | - | Gear Side Cover Screw | - |
| 14 | EX080-01 | - | Clip Ring | - | 58 | QW101-01 | - | Spool Tension Knob O-Ring | - |
| 15 | EX017-01 | - | Spool Shaft Bearing (Gear) | - | 59 | EX117-01 | - | Spool Tension Knob Bushing | - |
| 16 | EX301-01 | - | Frame Assembly | - | 60 | QW032-04 | - | Spool Tension Washer | - |
| 17 | NX092-01 | - | E-Clip | - | 61 | EX038-01 | - | Spool Tension Knob Washer | - |
| 18 | EX067-01 | - | Worm Shaft Bushing (Palm) | - | 62 | EX082-01 | - | Spool Cushion Washer | - |
| 19 | EX072-01 | - | Worm Shaft | - | 63 | EX033-01 | - | Spool Tension Knob | - |
| 20 | CX061-02 | - | Stablizer Bar | - | 64 | JX046-01 | - | Spring "D" Washer | - |
| 21 | EX119-01 | - | Side Cover Locking Lever | - | 65 | EX032-01 | - | Star Drag Washer | - |
| 22 | ZW096-01 | - | Side Cover Locking Spring | - | 66 | EX055-01 | - | Star Drag | - |
| 23 | EX099-02 | - | Front Support | - | 67 | NX054-01 | - | Handle Washer | - |
| 24 | EX047-01 | - | Line Guide Carrier | - | 68 | EX318-01 | - | Handle Assembly | - |
| 25 | ZW006-01 | - | Line Guide Pawl | - | 69 | QW003-01 | - | Handle Nut | - |
| 26 | BV035-01 | - | Line Guide Carrier Washer | - | 70 | JX034-01 | - | Handle Nut Cap | - |
| 27 | ZW007-01 | - | Line Guide Carrier Screw | - | 71 | QW123-01 | - | Handle Nut Cap Screw | - |
| 28 | EX016-01 | - | Worm Shaft Guide | - | 72 | EX027-02 | - | Hood | - |
| 29 | EX035-01 | - | Worm Shaft Washer | - | 73 | EX107-01 | - | Hood Screw | - |
| 30 | EX085-01 | - | O/S Pinion Gear | - | | | | | |
| 31 | NX090-01 | - | E-Clip | - | | | | | |
| 32 | EX009-01 | - | Thumb Bar | - | | | | | |
| 33 | EX025-01 | - | Pinion Yoke | - | | | | | |
| 34 | QW040-01 | - | Pinion Yoke Spring | - | | | | | |
| 35 | FX311-01 | - | Pinion Gear Assembly | - | | | | | |
| 36 | EX097-01 | - | Kick Lever Spring | - | | | | | |
| 37 | EX077-01 | - | Kick Lever | - | | | | | |
| 38 | EX039-01 | - | Release Slider | - | | | | | |
| 39 | ZW053-01 | - | Thumb Bar Screw | - | | | | | |
| 40 | EX121-01 | - | Release Slider Guide Washer | - | | | | | |
| 41 | QW125-02 | - | Release Slider Screw | - | | | | | |
| 42 | EX104-01 | - | Release Slider Spring | - | | | | | |
| 43 | ZW017-02 | - | Crank Shaft Bushing | - | | | | | |
| 43 | N/A | - | Crank Shaft Bearing | - | | | | | |